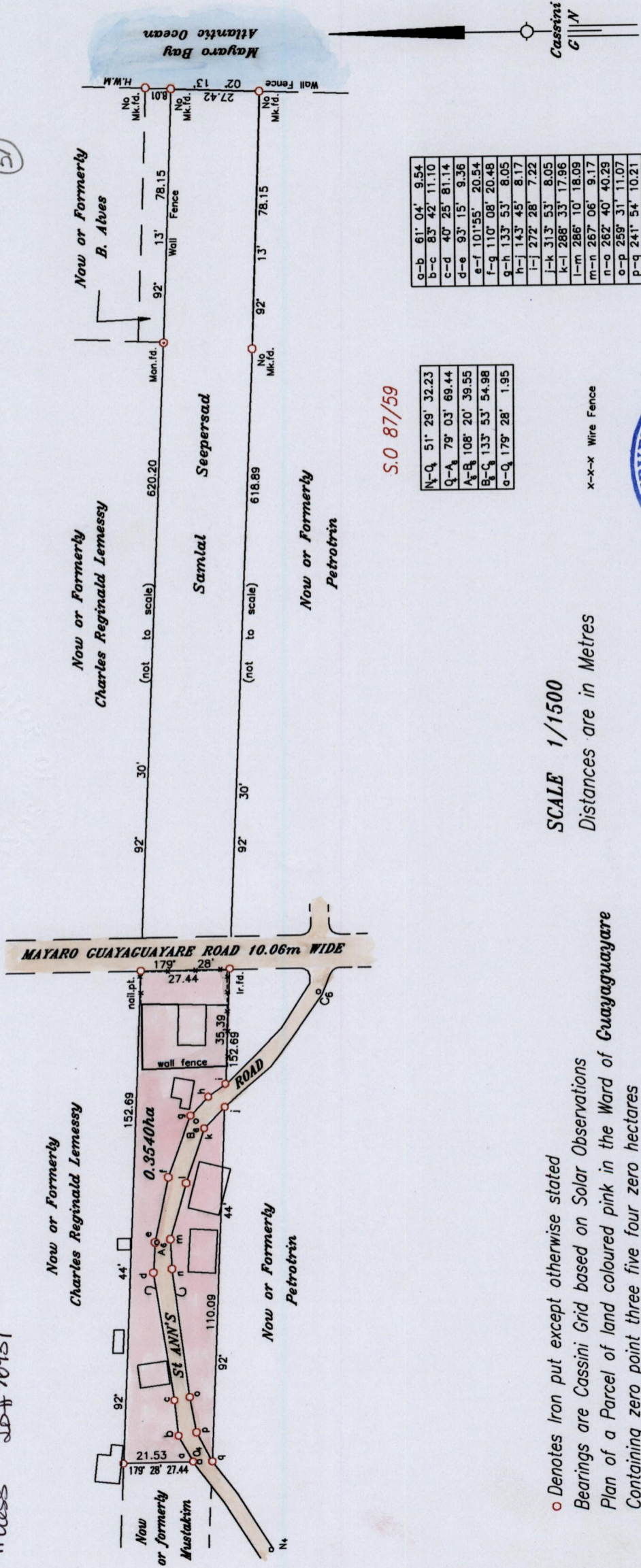


See Bk. 1044 Fol. 192
 See Bk. 1110 Fol. 152
 See Plan C.K.17

Process ID# 76937

camp located (51)



N-Q	51' 28"	32.23
Q-A	79' 03"	69.44
A-B	108' 20"	39.55
B-C	133' 53"	54.98
C-Q	179' 28"	1.95

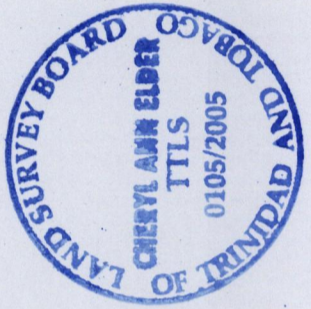
S.O 87/59

a-b	61' 04"	9.54
b-c	83' 42"	11.10
c-d	40' 25"	81.14
d-e	93' 15"	9.36
e-f	101' 55"	20.54
f-g	110' 08"	20.48
g-h	133' 53"	8.05
h-i	143' 45"	8.17
i-j	272' 28"	7.22
j-k	313' 53"	8.05
k-l	288' 33"	17.96
l-m	286' 10"	18.09
m-n	267' 06"	9.17
n-o	262' 40"	40.29
o-p	259' 31"	11.07
p-q	241' 54"	10.21

x-x-x Wire Fence

SCALE 1/1500

Distances are in Metres



o Denotes Iron put except otherwise stated
 Bearings are Cassini Grid based on Solar Observations
 Plan of a Parcel of land coloured pink in the Ward of Guayaguayare
 Containing zero point three five four zero hectares
 Surveyed by me with due authority, in June 2004 for Grace Mansook
 In accordance with Regulation 25 (1) of the Land Surveyors' Regulations 1998,
 I certify that this plan is correct.

Entered
 Cheryl Ann Elder
 Trinidad & Tobago Land Surveyor 01.05.2005

