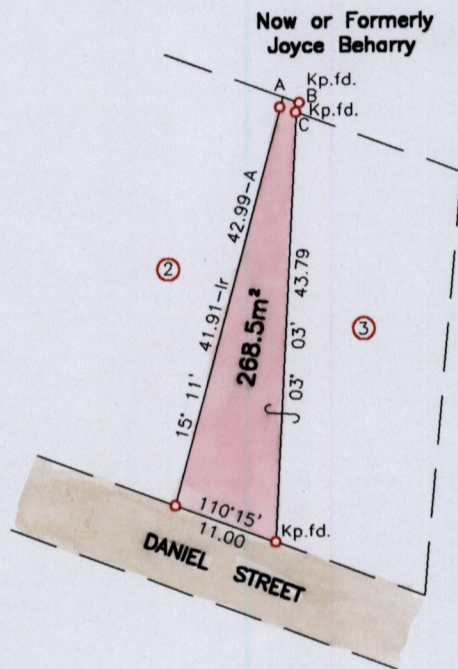
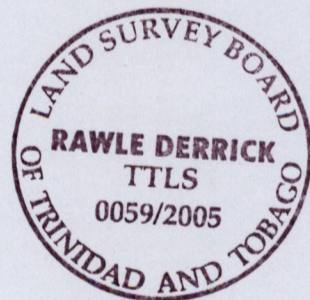


Process ID # 76985

Cadastral Sheet D.22.L
Ward of Pointe-a-Pierre
County of Victoria



A-B 110° 03' 1.84
B-C 200° 03' 1.00



SCALE 1/750

Distances are in Metres

o Denotes Iron put except otherwise stated

Bearings are Cassini Grid based on Solar Observations

Plan of a Parcel of land coloured pink in the Ward of Pointe-a-Pierre
Containing two six eight point five square metres

Surveyed by me with due authority, in November 2005 for Joseph & Leah Rivers
In accordance with Regulation 25 (1) of the Land Surveyors' Regulations 1998,
I certify that this plan is correct.

Entered

Rawle Derrick

Trinidad & Tobago Land Surveyor *November 22* 2005

Not Located