

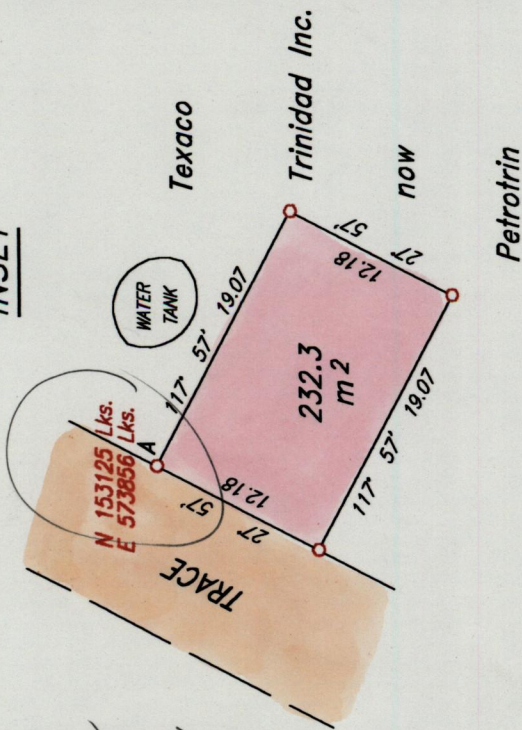
Ward of Guayaguayare
County of Mayaro
Cadastral Sheet H.19. 76A
2/c

U.P.R.N.

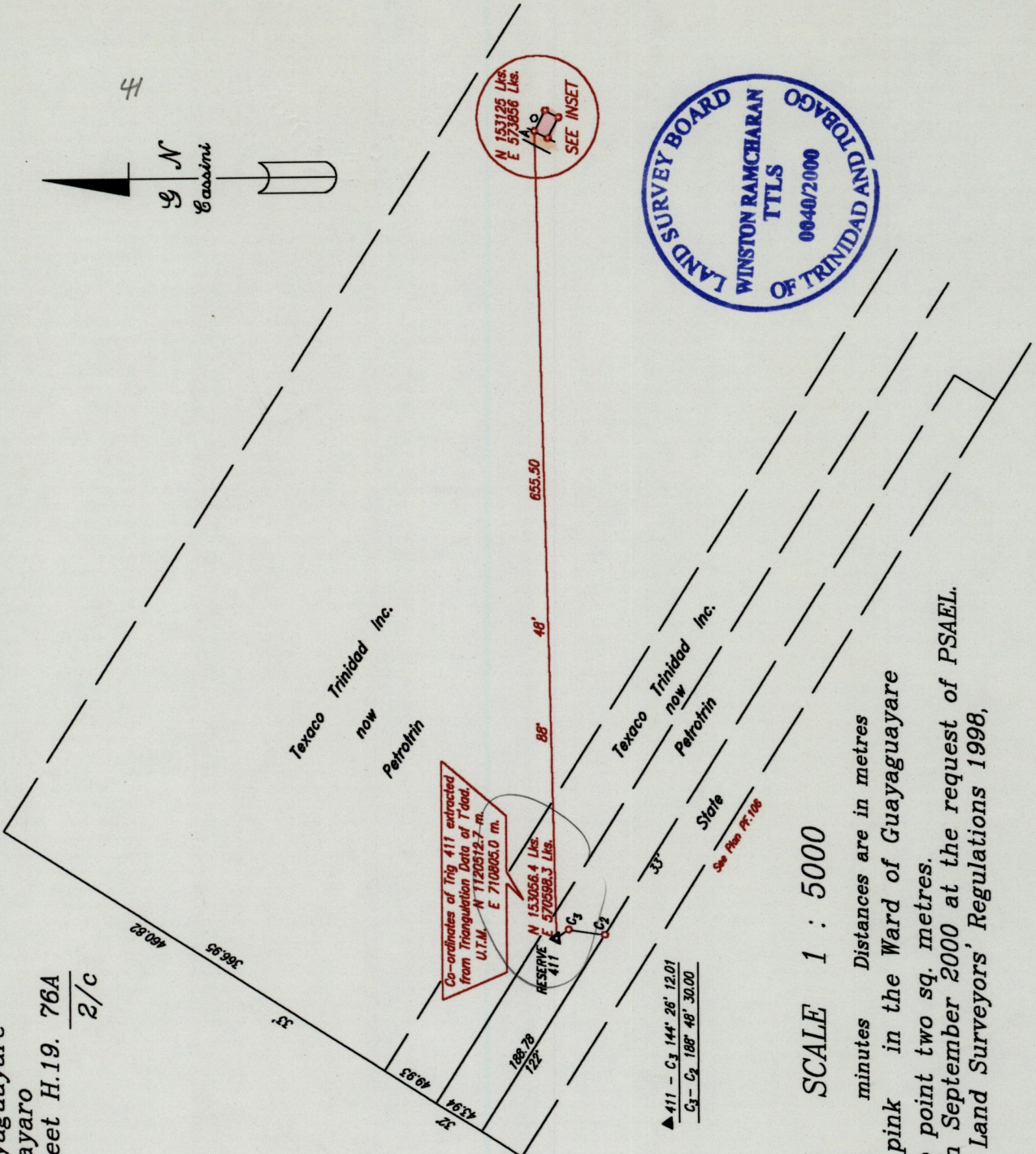
Process ID # 77599

See coordinates

INSET



SCALE:- 1: 500



SCALE 1 : 5000

○ Denotes Iron put, except otherwise stated.
Bearings are based on Solar Observations.
Note: To obtain compass bearings add/subtract minutes Distances are in metres
PLAN of a Parcel of land coloured pink in the Ward of Guayaguayare
Containing two hundred and thirty two point two sq. metres.
Surveyed by me, with due authority, in September 2000 at the request of PSAEL.
In accordance with rule 25 (1) of the Land Surveyors' Regulations 1998,
I certify that this plan is correct.

Winston Ramcharan
Trinidad and Tobago Land Surveyor (2nd Sect. E. number 2000.9.18)2000
Entered