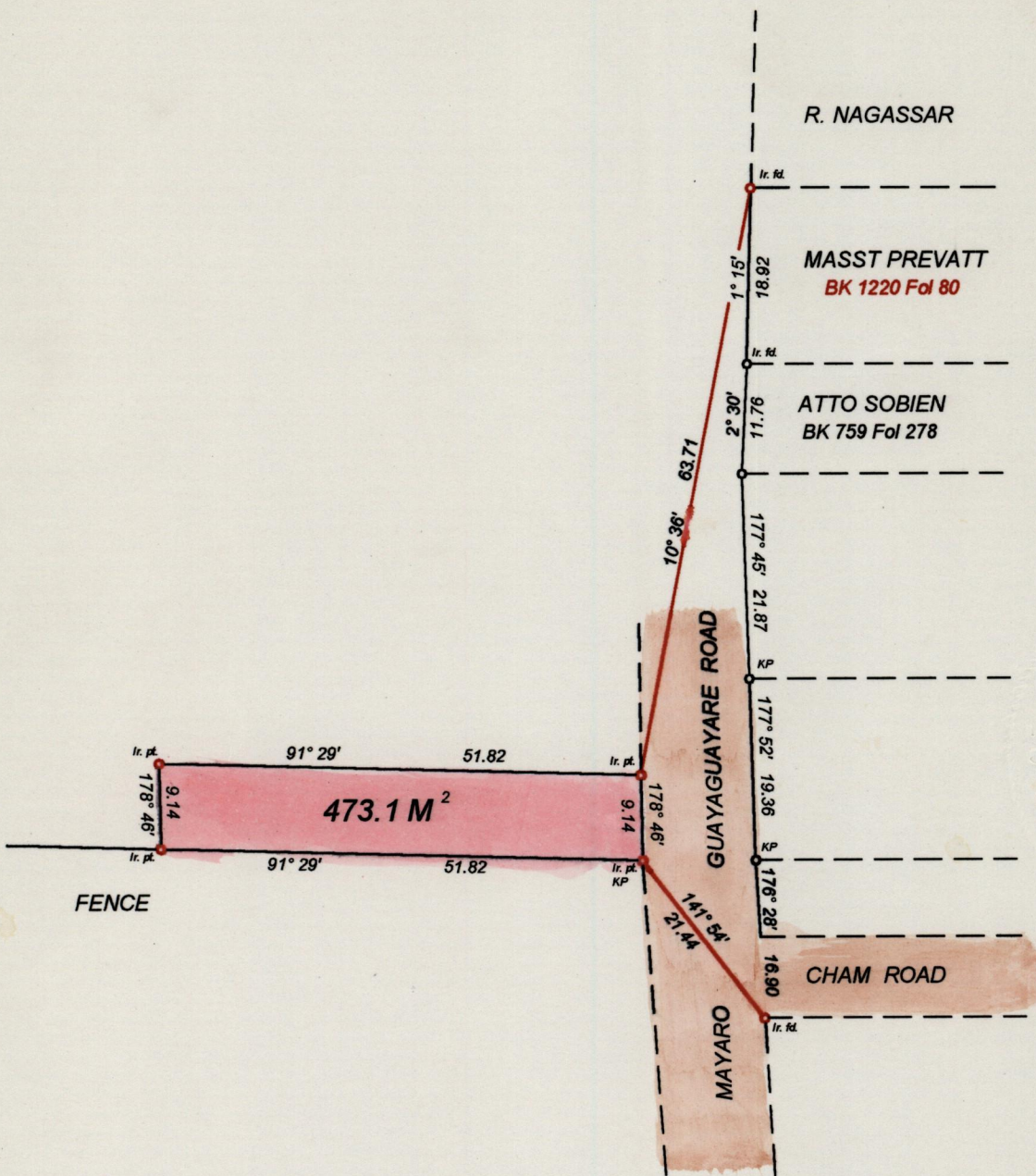


1384

177

Process ~~SDH~~ 77388

Cadastral Sheet H.5.1 56E
Ward of Guayaguayare 4/b
County of Mayaro



SCALE 1/750
Distances are in Metres

○ Denotes Iron put except where otherwise stated
Bearings are Cassini Grid based on Solar Observations

Plan of a Parcel of land colored pink in the Ward of Guayaguayare.
Containing four hundred and seventy three point one square metres.
Surveyed by me, with due authority in November 2003 for

In accordance with rule 25 (1) of the Land Surveyors' Regulation 1998.
I certify that this plan is correct. *Lawrence Clarke*

Entered

Trinidad and Tobago Land Surveyor... 19th November... 2003

Looped (18)