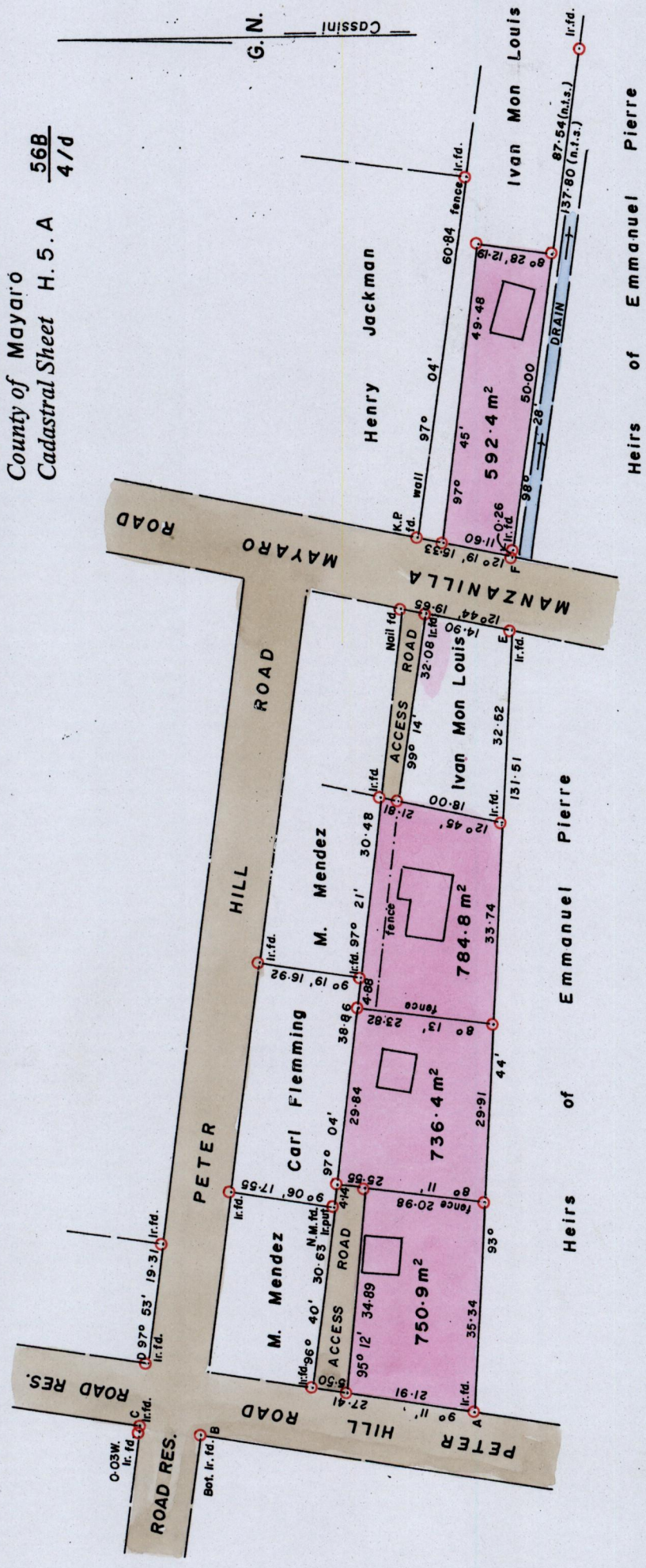


1334

156

Ward of Guayaguayare
County of Mayaro
Cadastral Sheet H.5.A $\frac{56B}{4/d}$



SCALE 1:1000

○ Denotes Iron put unless otherwise stated

Distances are in METRES

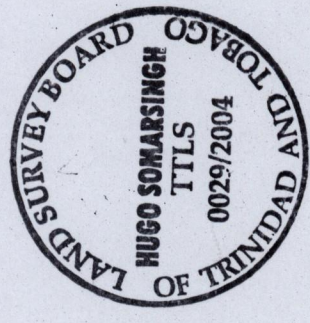
Bearings are Cassini Grid based on Solar Obs.

Note: To Obtain compass bearings add/subtract minutes

PLAN of 4 Parcels of land coloured Pink in the Ward of Guayaguayare
Containing together two thousand eight hundred and sixty four point five square metres
Surveyed by me, with due authority, in July 2001 for Ivan Mon Louis.

In accordance with Rule 25 (1), of the Land Surveyors Regulations 1998. I certify that this plan is correct.

Entered
Hugo Somarsingh
Trinidad and Tobago Land Surveyor 25th November 2004



Process SD#77809

See Bk. 969:22

See Plan E.G.82

A - B	356° 43'	46.31
B - C	9° 15'	10.04
C - D	97° 53'	10.30
E - F	91° 16'	12.00

(Handwritten signature)