

1334

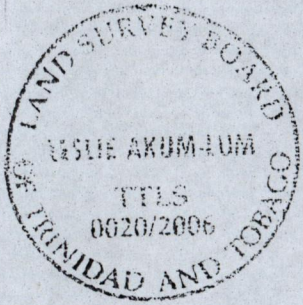
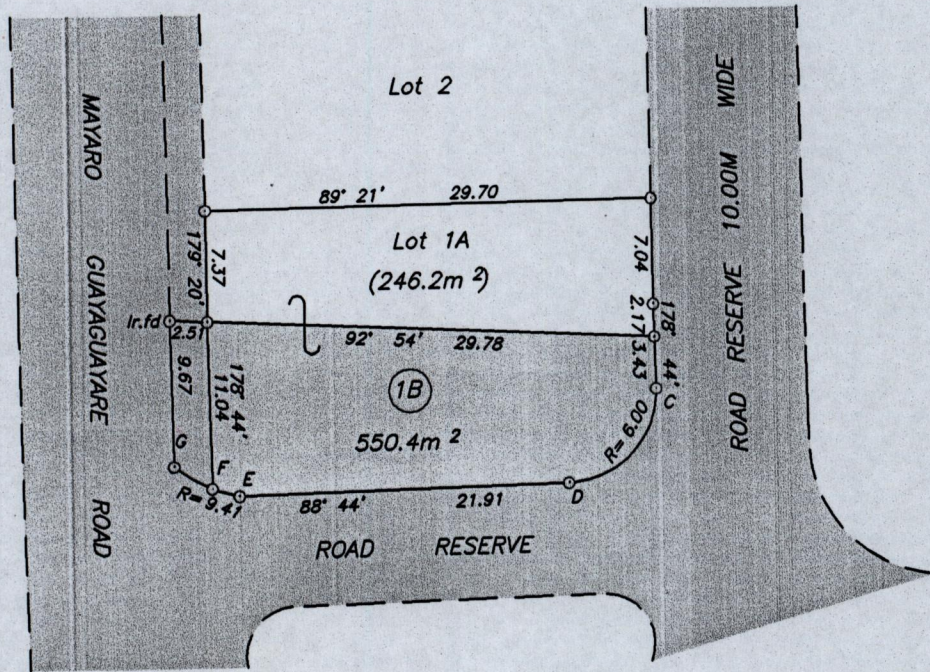
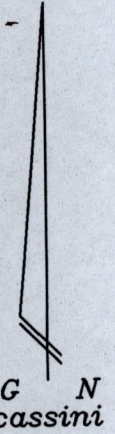
154

process ID# 77307

1UP

Cadastral Sheet H.5.E. $\frac{56E}{2/b}$
Ward of Guayaguayare
County of Mayaro

cannot locate



Lot 1A to be amalgamated with Lot 1B

E - F	258° 54'	1.87
F - G	300° 35'	2.94
C - D	223° 44'	8.49

SCALE 1/500

Distances are in metres

○ Denotes Iron Put except where otherwise stated
Bearings are Cassini grid based on Magnetic Needle
Note: To obtain compass bearings add 16 minutes.

PLAN of a Parcel of land coloured pink in the Ward of Guayaguayare
Containing five hundred and fifty point four square metres
Surveyed by me, with due authority, in May 2005 for Colonial Life Insurance Company
(Trinidad) Limited
In accordance with Regulation 25 (1) of the Land Surveyors' Regulations 1998,
I certify that this plan is correct.

Checked by..... *[Signature]*

Entered..... Trinidad & Tobago Land Surveyor *3rd Jan 2006*