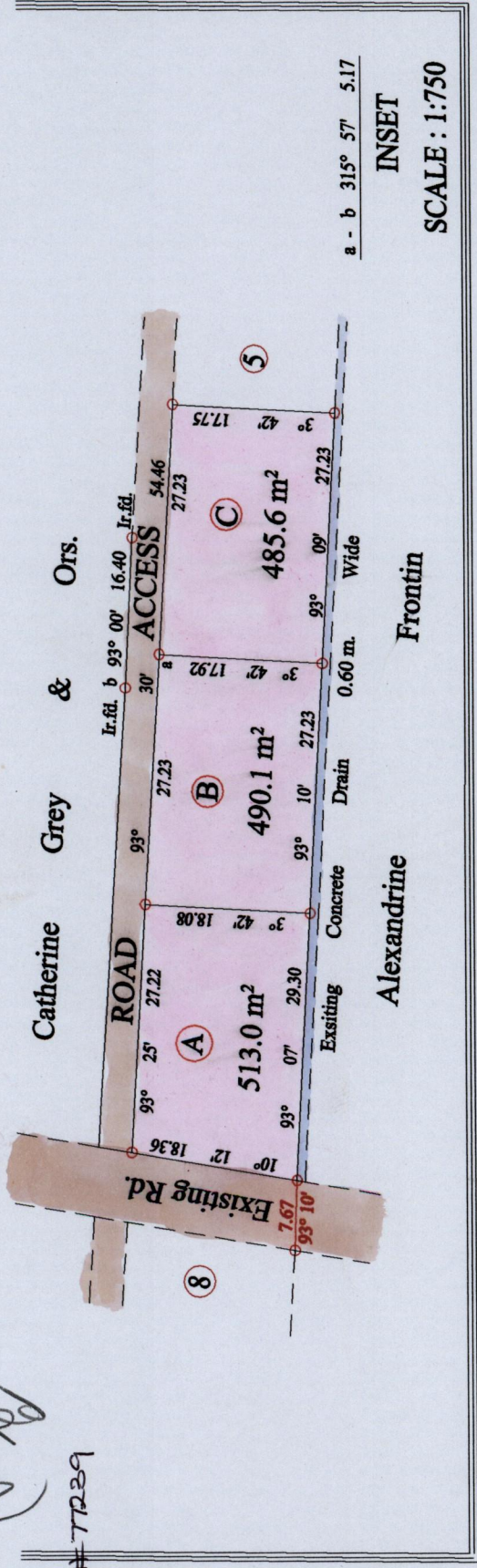


Accepted
(15)

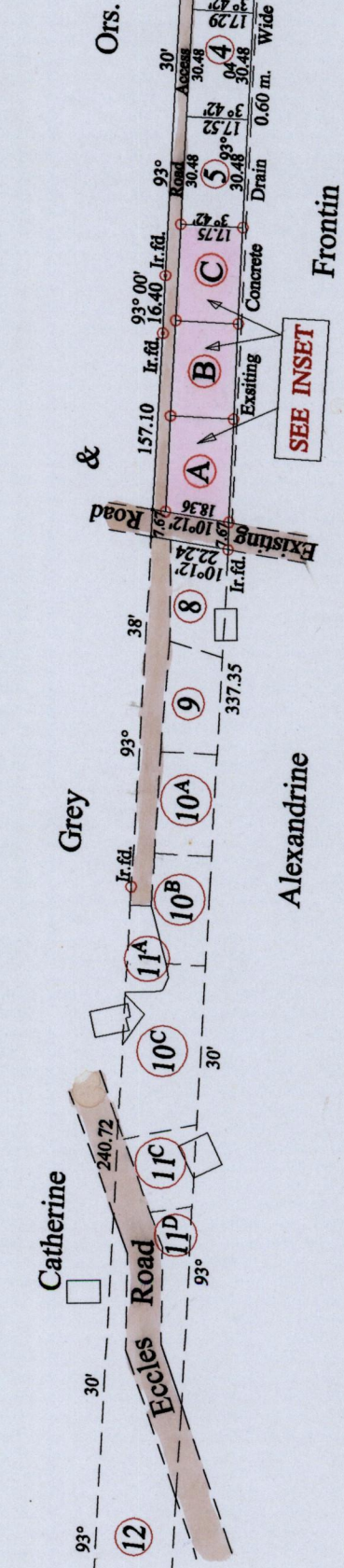
Process ID# 77239

30P+34P

Ward of Mayaro
County of Guayaguayare
Cadastral Sheet (H.10.A) 56.E
4/d



(GRAND LAGOON)
G.A. de Pompignan

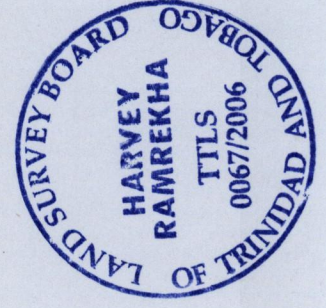


Mayaro Guayaguayare Road

SCALE : 1:2000

○ Denotes Iron put except stated otherwise.

Note: Bearings are cassini grid based on solar observations Distances are in metres
PLAN of 3 Parcels of land coloured pink in the Ward of Guayaguayare
 Containing together one thousand four hundred and eighty eight point seven square metres
 Surveyed by me, with due authority, in October 2006 for Mrs. Bholai
 In accordance with Regulation 25 (1) of the Land Surveyors' Regulation 1998,
 I certify that this plan is correct.



Checked by.....
[Signature]

Trinidad & Tobago Land Surveyor ... P. 11. 2006

1334

151