

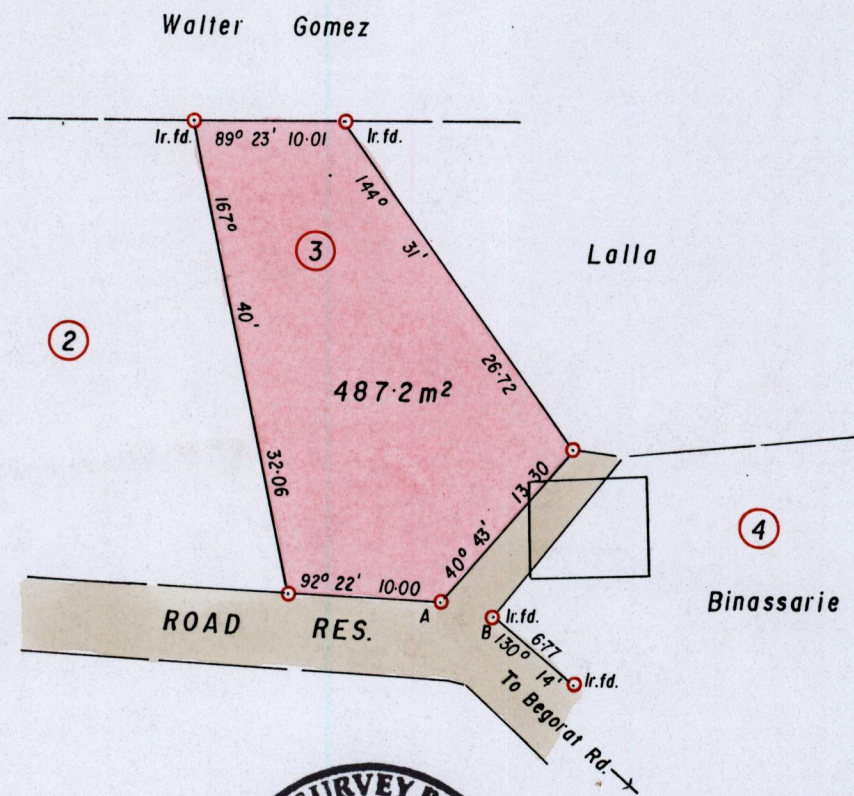
Process ~~124~~ 77137

Ward of Guayaguayare
County of Mayaro
Cadastral Sheet H.5.E. 56E
2/d

cannot locate

G.N.

CASSINI



ENCROACHMENT 0.9m² (10 S.F.)

A - B 106° 07' 3.70

○ Denotes Iron put unless otherwise stated
Bearings are Cassini based on Solar Ods.

SCALE 1/500
Distances are in metres

PLAN of a parcel of land coloured pink in the Ward of Guayaguayare
Containing four hundred and eighty-seven point two square metres
Surveyed by me, with due authority, on 12th February 2005 for
In accordance with Regulation 25 (1) of the Land Surveyors' Regulations 1998,
I certify that this plan is correct

Lawrence Clarke

Trinidad and Tobago Land Surveyor ... 12th March 2005

Entered