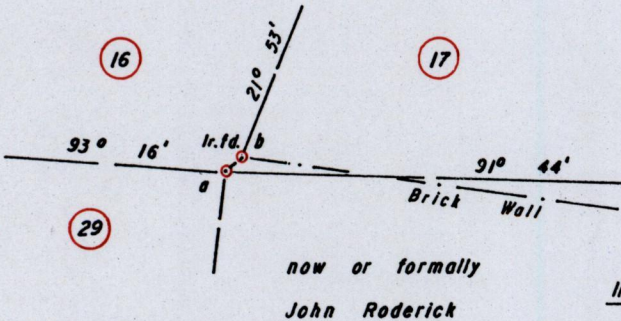
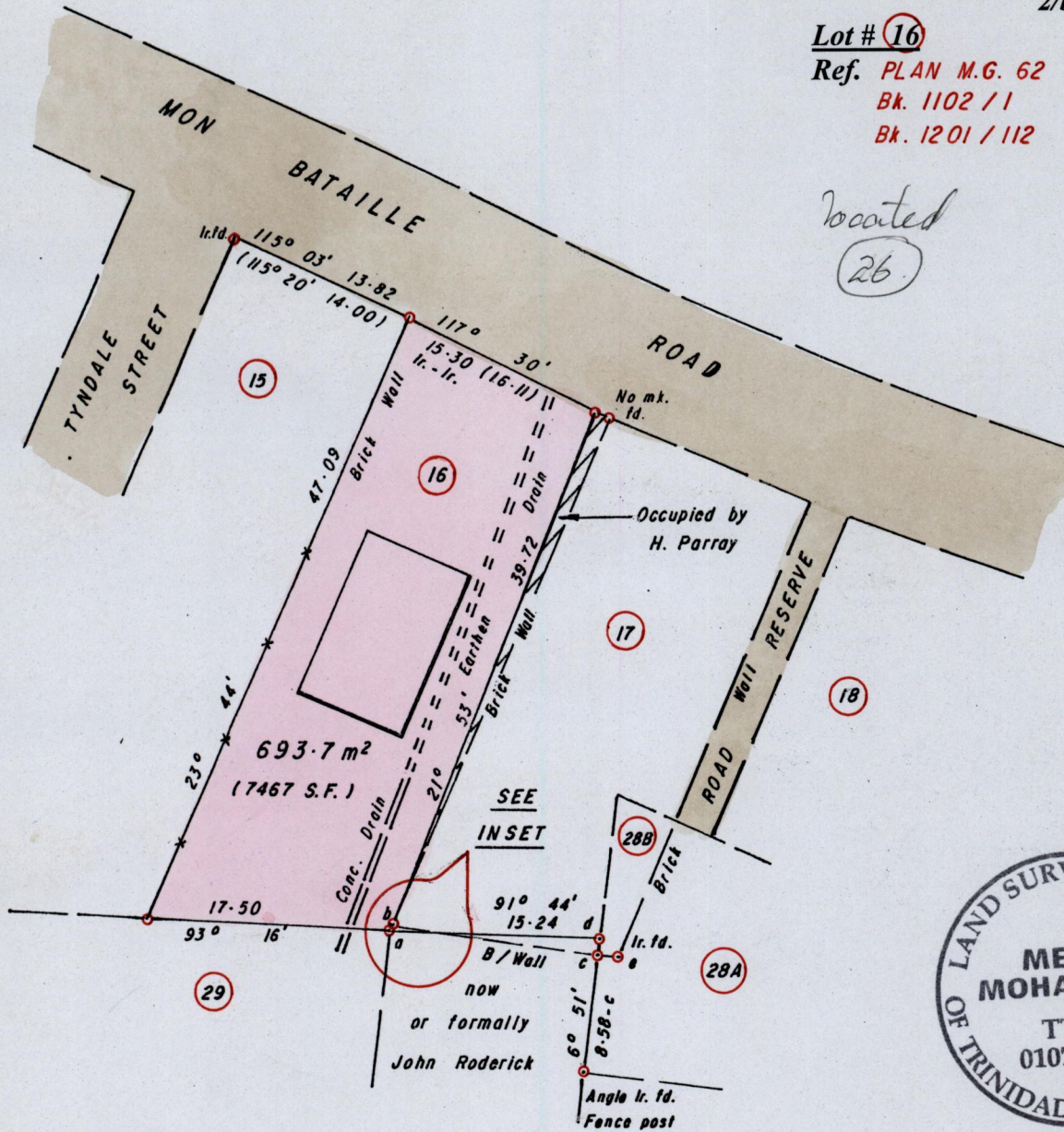


Ward of Guayaguayare  
County of Mayaro  
Cadastral Sheet 56E, H.5.A.  
2/b

Process SD# 77015

Lot # 16  
Ref. PLAN M.G. 62  
Bk. 1102 / 1  
Bk. 1201 / 112

located  
26



a - b	52° 37' 0.31	(6° 51' 1.10)
c (No mk.) - d (No mk.) Id.	6° 51'	1.36 Id.
c - e	96° 00'	1.12

○ Denotes Iron put unless otherwise stated  
Bearings are Cassini Grid based on Solar Obs.

SCALE 1 / 500  
Distances are in METRES

Note: To Obtain compass bearings add/subtract minutes

PLAN of a Parcel of land coloured Pink in the Ward of Guayaguayare  
Containing six hundred and ninety three point seven square metres  
Surveyed by me, with due authority, in September 2006 at the request of Nazmoon Rasool,  
Shazeed Yathali And Shaffayath Yathali  
In accordance with Regulation 25 (1) of the Land Surveyors' Regulations 1998,  
I certify that this plan is correct.

Entered on.....  
Meela Mohammed  
Trinidad and Tobago Land Surveyor..... 2nd. October 2006