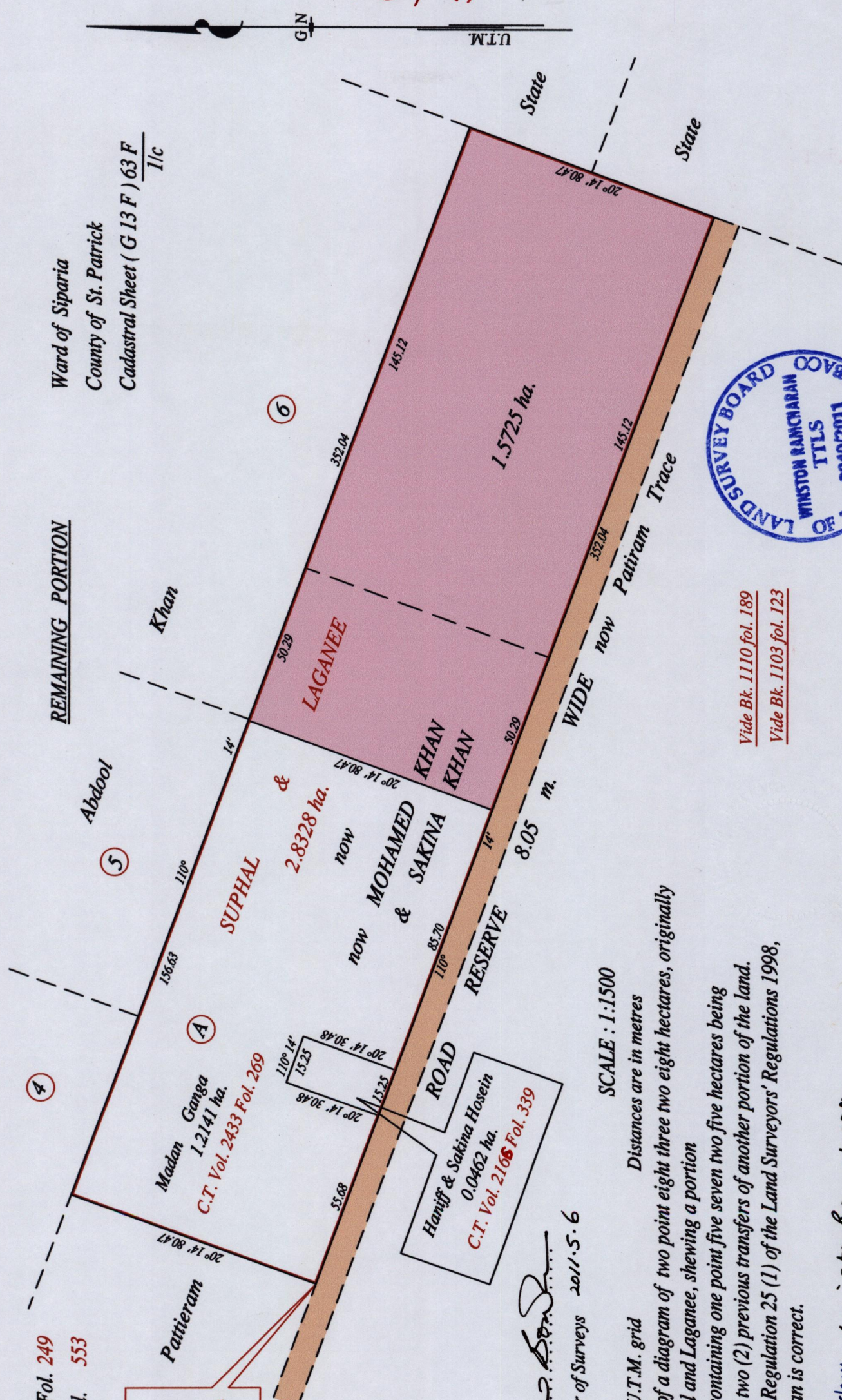


R.P.O. Vol. 79 Fol. 249
 C.T. Vol. 458 Fol. 553

E 0669920
 N 1125383
 Reading taken with
 Handheld G.P.S.
 U.T.M. 20 Naparima
 ± 5m.



Ward of Siparia
 County of St. Patrick
 Cadastral Sheet (G 13 F) 63 F
 1/c

REMAINING PORTION



Vide Bk. 1110 fol. 189
 Vide Bk. 1103 fol. 123

Approved *[Signature]*
 Director of Surveys 2011.5.6

SCALE : 1:1500
 Distances are in metres

Note: Bearings are U.T.M. grid
 This is a true copy of a diagram of two point eight three two eight hectares, originally transferred to Suphal and Laganee, shewing a portion coloured pink and containing one point five seven two five hectares being the remainder after two (2) previous transfers of another portion of the land.
 In accordance with Regulation 25 (1) of the Land Surveyors' Regulations 1998,
 I certify that this plan is correct.

Checked by *[Signature]* 4/5/2011

Entered on Trinidad & Tobago Land Surveyor 2.7.7-d. March, 2011

1376/99

66