

R.P.O. Vol. 118 Fol. 511

C.T. Vol. 2642 Fol. 189

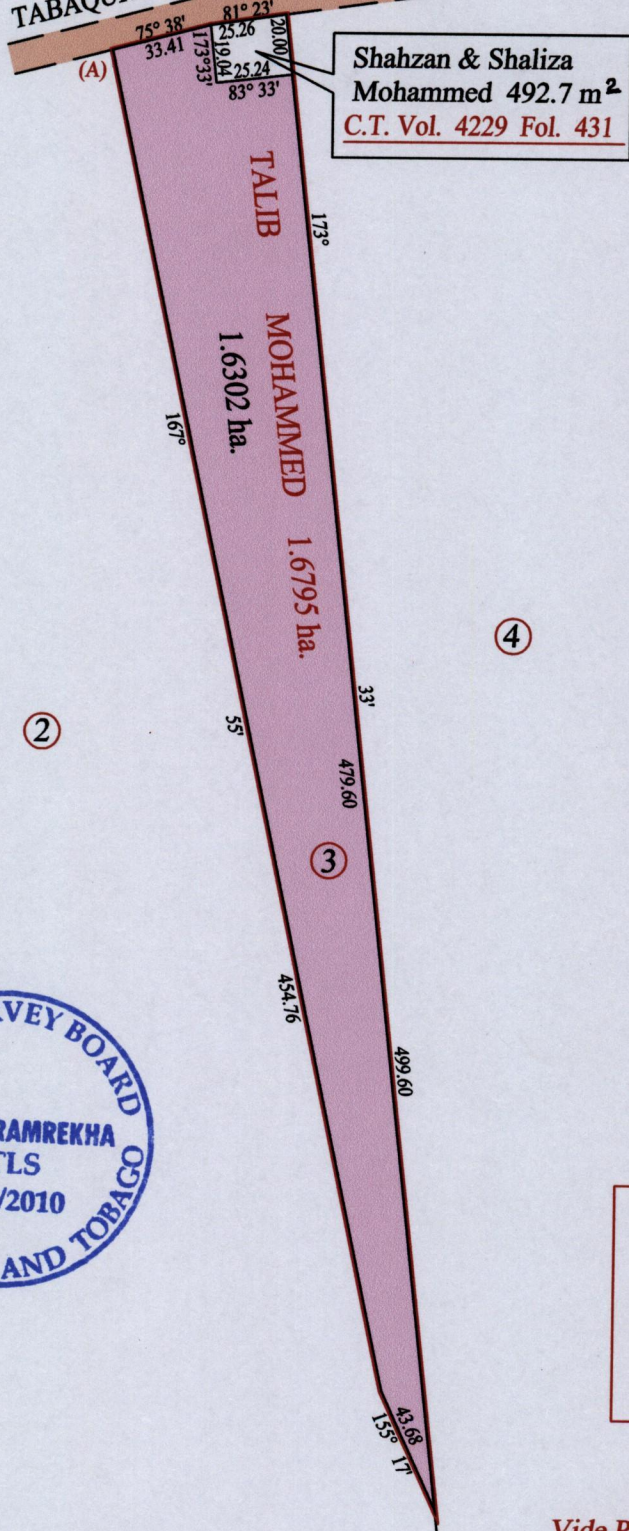
REMAINING PORTION

Ward of Charuma

County of Nariva

Cadastral Sheet (E.21.N.) 55.B.
3/b

TABAQUITE RIO - CLARO RD.



At Station (A)
E 0698790
N 1140876
Reading taken with
Handheld G.P.S.
U.T.M. Zone 20
Naparima
± 5 m.

Vide Plan P. E. 217

Approved *[Signature]*
Director of Surveys 2011.5.6

SCALE : 1:2500

Note: Bearings are cassini grid based on solar observations Distances are in metres
This is a true copy of a diagram of one point six seven nine five hectare, originally transferred to Talib Mohammed, shewing a portion coloured pink and containing one point six three zero two hectare being the remainder after one (1) previous transfer of another portion of the land.
In accordance with Regulation 25 (1) of the Land Surveyors' Regulations 1998, I certify that this plan is correct.

Checked by *[Signature]* 4/5/2011

Entered on Trinidad & Tobago Land Surveyor 21.12.2010