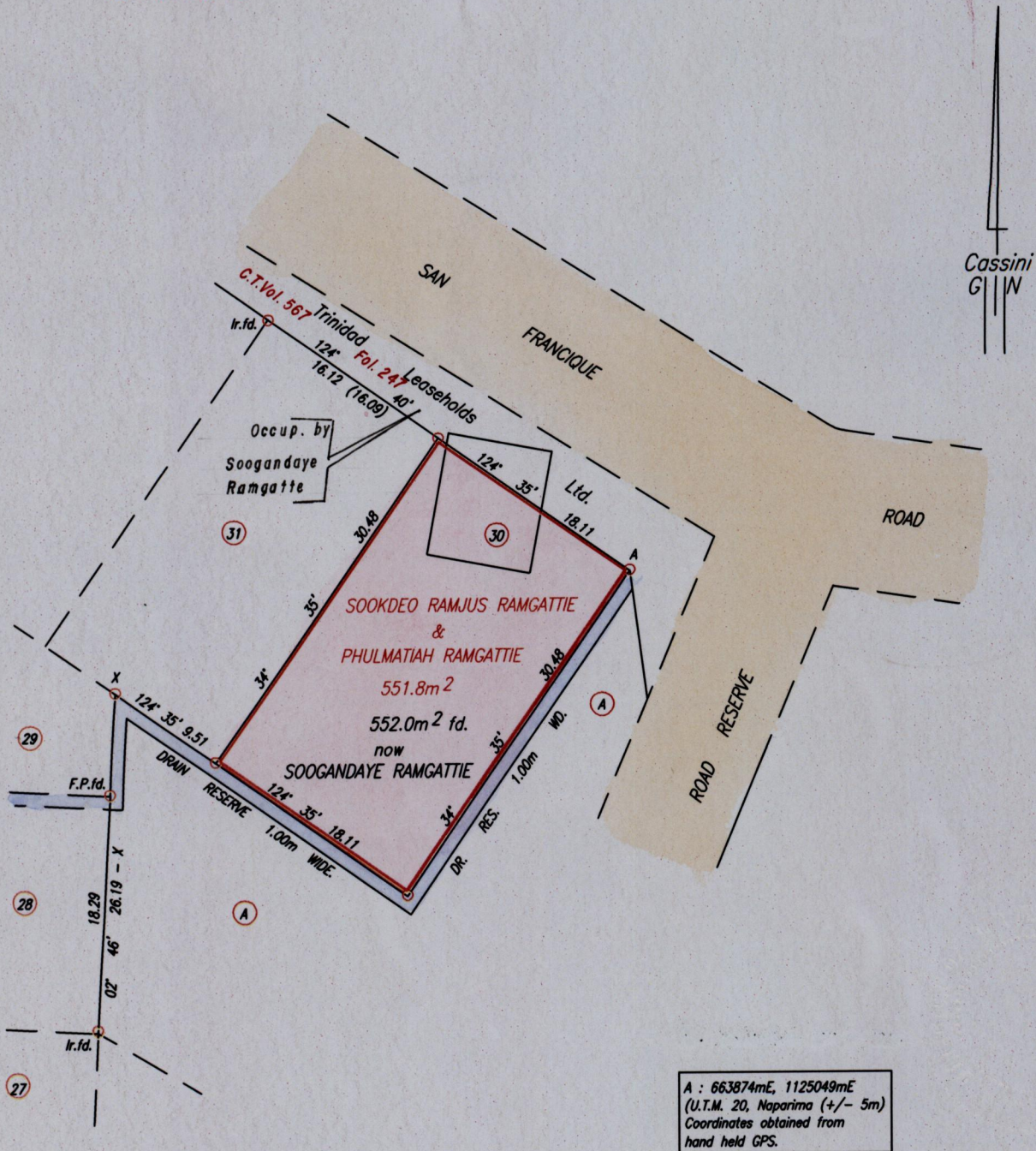


R.P.O. Vol. 146 Fol. 81
C.T. Vol. 4348 Fol. 307

Cadastral Sheet G.12.G. 63E
Ward of Siparia 1/c
County of St. Patrick
5km, San Francique Road,
Penal.

Vide Plan J.B. 163
Vide Plan R.E. 40



Approved
[Signature]
Director of Surveys 2011.4.21

SCALE 1:500
Distances are in Metres

○ Denotes Iron put except otherwise stated.
Bearings are Cassini Grid based on Solar Observations.

PLAN of a Parcel of land coloured pink in the Ward of Siparia
Containing five hundred and fifty two point zero square metres.
Redefined by me, with due authority, in May, 2010
In accordance with Regulation 25(1) of the Land Surveyors' Regulations 1998,
I certify that this plan is correct.

Checked by *[Signature]* 18/4/2014

Entered Trinidad & Tobago Land Surveyor . . 15th October . . 2010

