

R.P.O. Vol. 680 Fol 563

C.T Vol. 3867 Fol 441

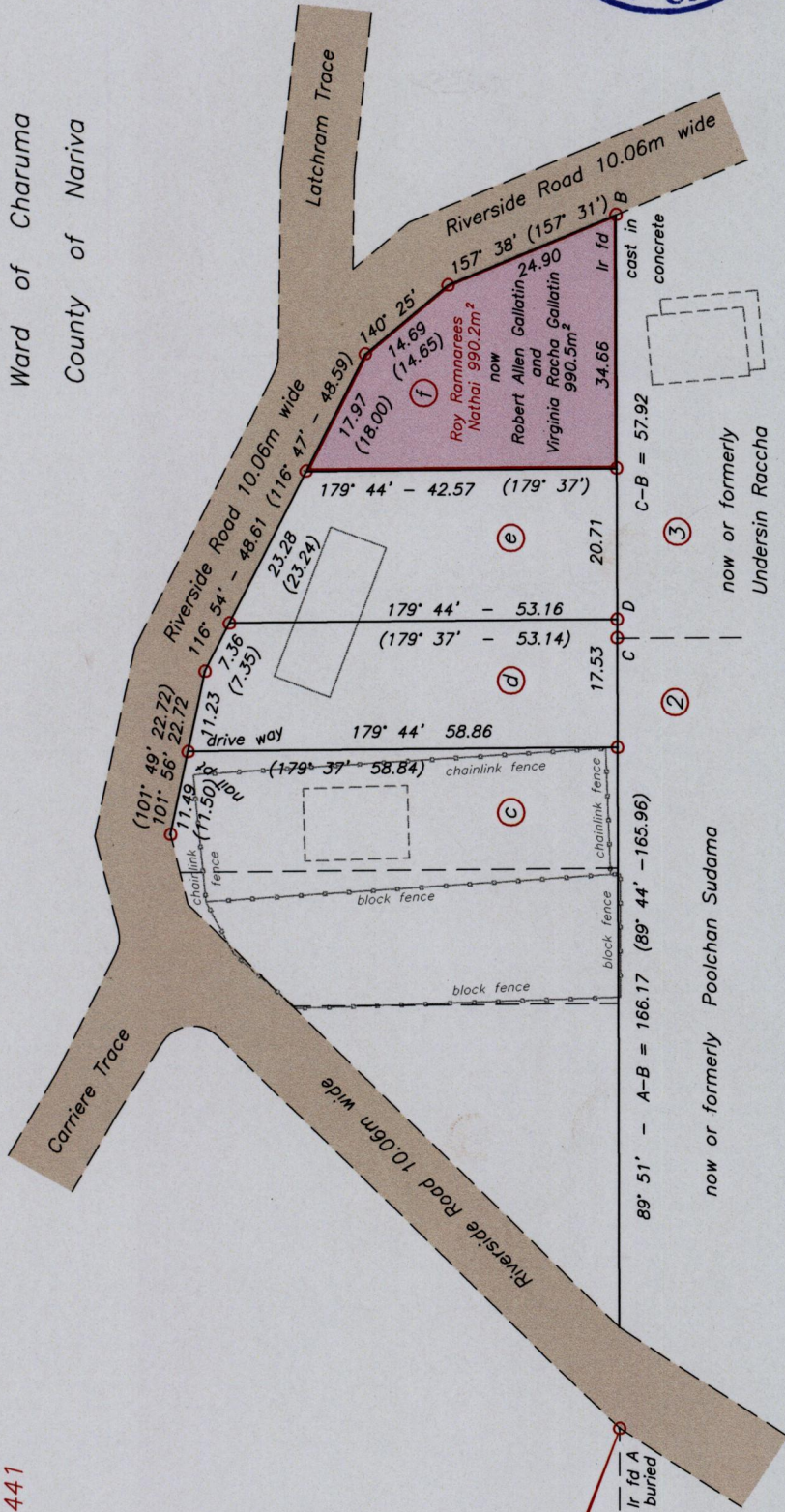
Bk: 497 folio: 241

Bk: 1123 folio: 171

Bk: 1148 folio: 04

Cadastral Sheet H. I. G. & H., 55D  
1/b

Ward of Charuma  
County of Nariva



Coordinate Station Ir fd  
1161133mN, 682286mE  
U.T.M. 20 WGS 84 ( $\pm 6.0m$ )

Approved *[Signature]*  
Director of Surveys  
20/11/4.21

○ Denotes Iron Put unless otherwise stated

Bearings are Cassini Grid based on Solar Obs.

PLAN of one parcel of land coloured pink in the Ward of Charuma  
Containing nine hundred and ninety point five square metres  
Surveyed by me, with due authority, in November 2010

In accordance with Regulation 25(1) of the Land Surveyors' Regulations 1998, I certify that this plan is correct

Checked by *[Signature]* 18/11/2011

Entered by .....

*[Signature]*

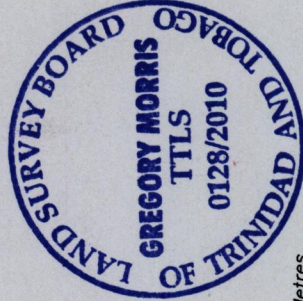
Trinidad and Tobago Land Surveyor

18th November

2010

1376

80



Distances are in Metres

SCALE 1 : 1000

LINE	BEARING	DISTANCE
C-D	89°-51'	2.55