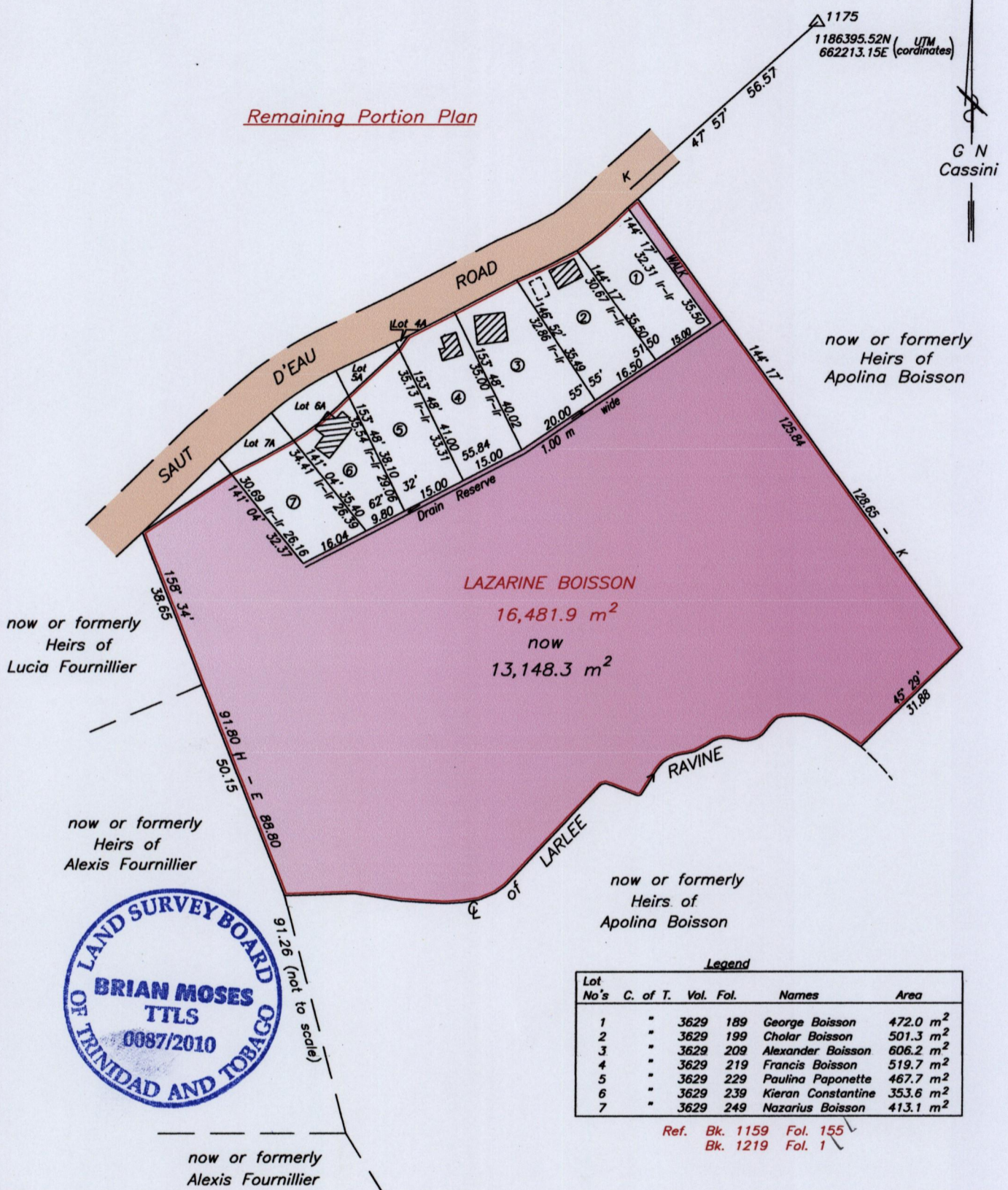


1376

R.P.O. Vol. Fol.
C.T. Vol. 3296 Fol. 199

Cadastral Sheet A.15.F. 13A/4/b
Ward of Diego Martin
County of St. George



Approved Director of Surveys 2010.12.31

Bearings are Cassini Grid based on Solar Observations

This is a true copy of a diagram of one six four eight one point nine square metres Originally transferred to Lazarine Boisson showing a portion of land Coloured pink containing one three one four eight point three square metres being the remainder after seven previous transfers of other portions of the land. In accordance with Regulation 25 (1) of the Land Surveyors' Regulations 1998, I certify that this Plan is correct.

Checked by 15/12/10
Entered on

Brian Moses
Trinidad & Tobago Land Surveyor (T.T.L.S.)
10th Nov 2010

SCALE 1:1250
Distances are in METRES