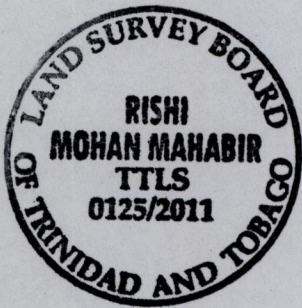
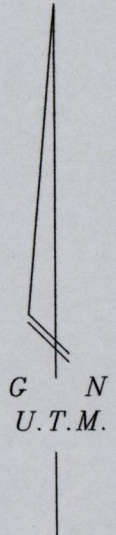
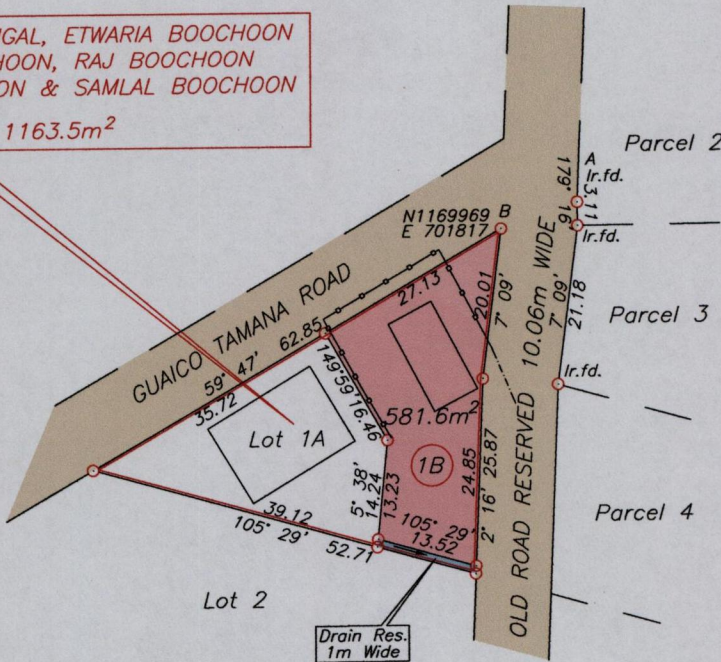


R.P.O. Vol. 66 Fol. 33
C.T. Vol. 5088 Fol. 185

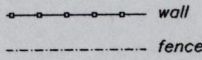
Ward of Tamana
County of St. George
Cadastral Sheet E.1.D. $\frac{25E}{2/d}$

BOOCHOON MUNGAL, ETWARIA BOOCHOON
JOHN BOOCHOON, RAJ BOOCHOON
SONNY BOOCHOON & SAMLAL BOOCHOON
1163.5m²



Approved

[Signature]
Director of Surveys
2011.4.21



See Bk. 830A Fol. 47
Bk. 753 Fol. 57

A - B 251' 14' 10.71

SCALE 1/1000

Distances are in metres

○ Denotes iron put except where otherwise indicated.
Co-ordinates are UTM zone 20N Naparima Datum +/-5m
obtained from a hand held GPS.
Bearings are U.T.M. grid based on Solar Observations.
Note: To obtain compass bearings add 31 minutes.

PLAN of a Parcel of land coloured pink in the Ward of Tamana

Containing five eight one point six square metres

Surveyed by me, with due authority, in July 2010

In accordance with Regulation 25 (1) of the Land Surveyors' Regulations 1998,
I certify that this plan is correct.

Checked by *[Signature]* 18/3/2011

Entered..... Rishi P. Mahabir
Trinidad & Tobago Land Surveyor..... 15th Feb 2011