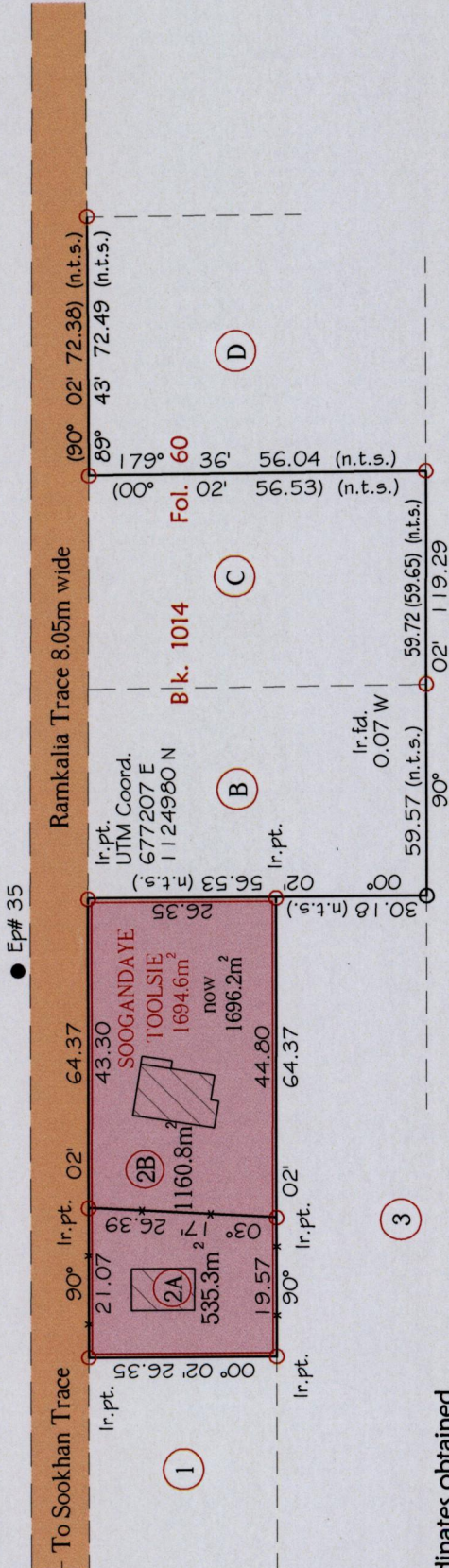


R.P.O Vol. 692 Fol. 45  
 C.T. Vol. 2349 Fol. 519

Address - Lot #2A & 2B Ramkalia Trace,  
 Barrackpore.

Ward of Siparia  
 County of St. Patrick  
 Cadastral Sheet (G.14.F), 64D  
 3/b

Press ID# 33153



Note - UTM (WGS 84) Coordinates obtained  
 from hand held GPS receiver  
 + 5.00m

Approved  
 Director of Surveys 2011.4.27

○ Denotes Iron found except stated otherwise.

Note: Bearings are Cassini grid based on solar observations  
 Plan of 2 Parcels of land coloured pink in the Ward of Siparia.

Containing together one thousand six hundred and ninety six point one square metres.  
 Surveyed by me, with due authority, in August 2010 for Sharon Ramsawak.

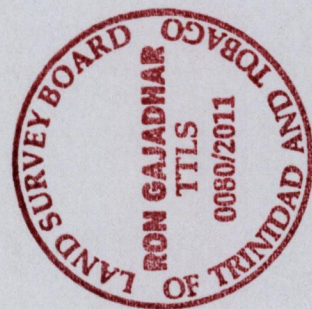
In accordance with Regulation 25(1) of the Land Surveyors' Regulations 1998,

I certify that this plan is correct.

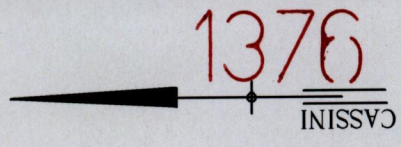
Checked by *M. M. M.* 18/3/2011

Entered *M. M. M.* 18/3/2011

Ref.:- Vol. 980 Fol. 13  
 R.P.O. Vol. 2349 Fol. 505  
 SCALE 1:1000



Basdeo  
 then  
 Dookhancee



1376

1376/64

64