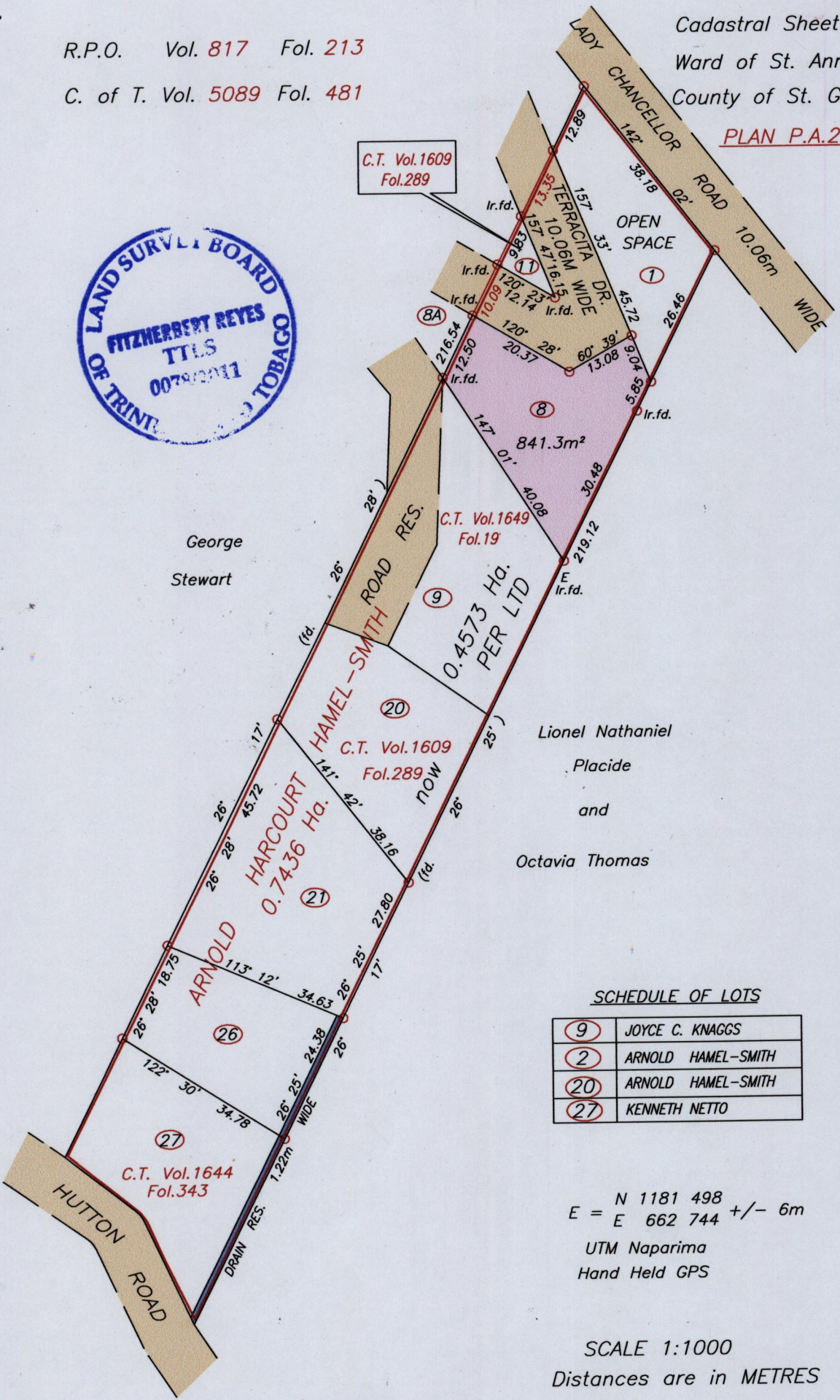
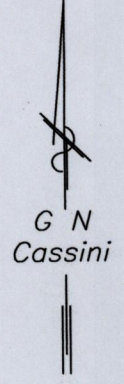


R.P.O. Vol. 817 Fol. 213

C. of T. Vol. 5089 Fol. 481

PLAN P.A.21

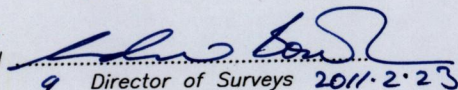


SCHEDULE OF LOTS

9	JOYCE C. KNAGGS
2	ARNOLD HAMEL-SMITH
20	ARNOLD HAMEL-SMITH
27	KENNETH NETTO

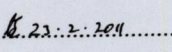
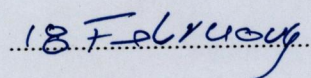
N 1181 498
E = E 662 744 +/- 6m
UTM Naparima
Hand Held GPS

SCALE 1:1000
Distances are in METRES

Approved 
Director of Surveys 2011.2.23

○ Denotes Iron put
To obtain Compass Bearing subtract 2 minutes

PLAN of a Parcel of land coloured pink in the Ward of St. Anns
Containing eight hundred and forty one point three square metres
Surveyed by me, with due authority, in September 2009
In accordance with Regulation 25 (1) of the Land Surveyors' Regulations 1998,
I certify that this Plan is correct.

Checked by  T.T.L.S.
Entered on
Trinidad & Tobago Land Surveyor  18 February 2011