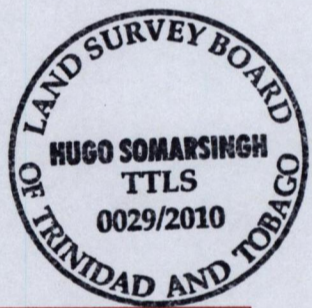
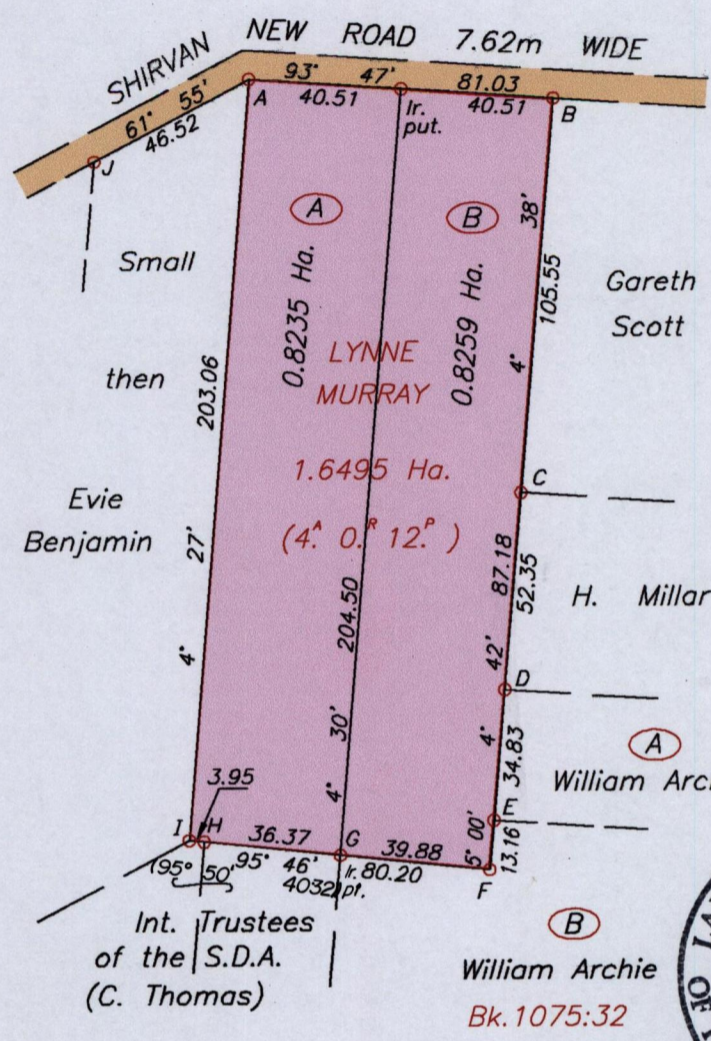
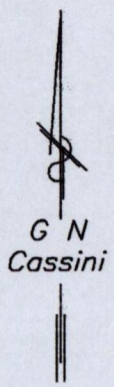


R.P.O. Vol. Fol. C.T. Vol. 4564 Fol. 233

Cadastral Sheet (I.21.C.) 1/b Parish of St. Patrick Ward of Tobago CANAAN

Bk.1241 Fol.38



X = N 1234723 +/- 5.0m E 739679 UTM 20 WGS 84 Hand Held GPS

Approved [Signature] Director of Surveys 2011.2.16

SCALE 1:2000 Distances are in METRES

Denotes Iron found except where otherwise stated. Bearings are based on Solar observations

PLAN of 2 Parcels of land coloured pink in the Ward of Tobago Containing together one point six four nine four hectares Surveyed by me, with due authority, on 25th June 2009 In accordance with Regulation 25 (1) of the Land Surveyors' Regulations 1998, I certify that this Plan is correct.

Checked by [Signature] T.T.L.S. Entered on [Signature] Trinidad & Tobago Land Surveyor 2010