

R.P.O. Vol. 27 Fol. 571

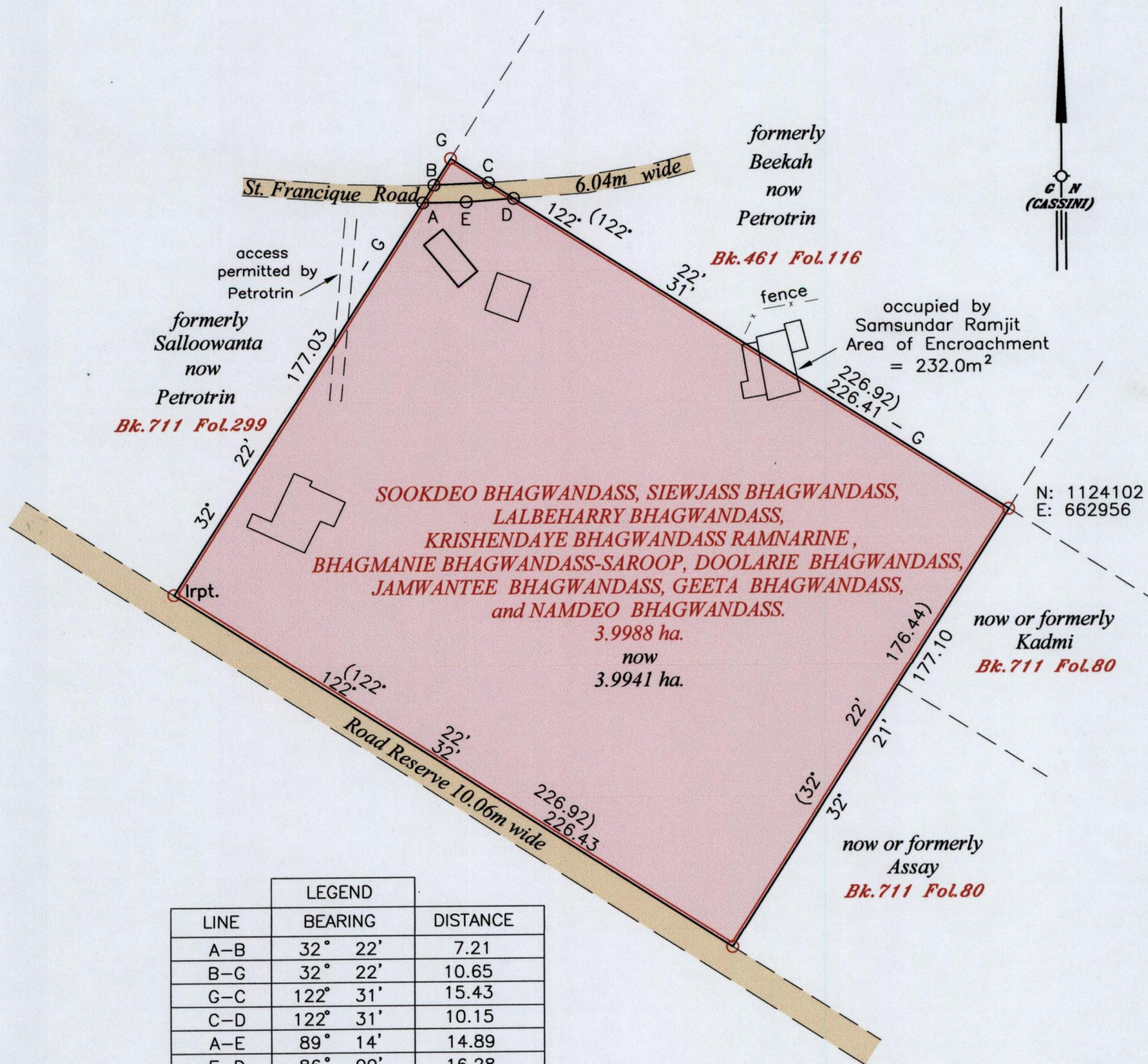
C.T. Vol. 4358 Fol. 121

Ward of Siparia

County of St. Patrick

Cadastral Sheet G.12.J

63D
4/b



LEGEND		
LINE	BEARING	DISTANCE
A-B	32° 22'	7.21
B-G	32° 22'	10.65
G-C	122° 31'	15.43
C-D	122° 31'	10.15
A-E	89° 14'	14.89
E-D	86° 00'	16.28

Vide: Bk.461 Fol.118



Coordinate was obtained by
Hand Held GPS
Naparima Datum (+/-5m)
UTM Zone 20

Approved *[Signature]*
Director of Surveys
2011.2.16

SCALE 1:2000

Distances are in metres

○ Denotes Iron found except stated otherwise.
Bearings are Cassini Grid based on Solar Observations
Plan of a Parcel of land coloured pink in the Ward of Siparia.
Containing three point nine eight eight one hectares.
Surveyed by me, with due authority, in February 2010,
In accordance with Regulation 25 (1) of the Land Surveyors' Regulations 1998,
I certify that this plan is correct.

Checked by *[Signature]*

[Signature]

Entered on Trinidad & Tobago Land Surveyor *[Signature]* 05th January 2011