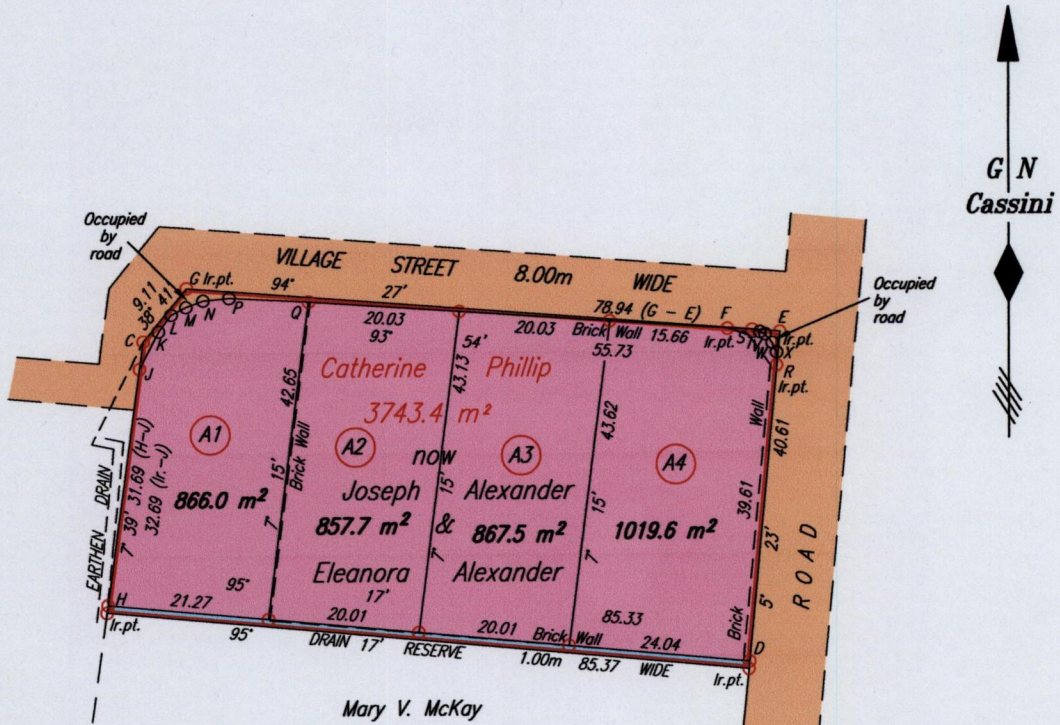


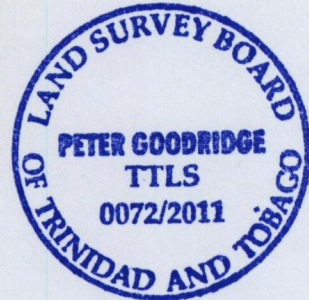
CANAAN



LEGEND

From - To	Bearing	Distance
R - E	5° 23'	4.53
J - C	7° 39'	3.73
J - K	26° 25'	5.62
K - L	36° 52'	2.78
L - M	62° 09'	2.21
M - N	69° 19'	2.41
N - P	84° 37'	3.45
P - Q	92° 52'	10.55
F - S	93° 17'	3.29
S - T	107° 35'	1.05
T - V	115° 35'	0.76
V - W	140° 26'	1.47
W - X	156° 00'	1.43
X - R	178° 57'	1.71
S - E	94° 27'	3.67

No mk.fd.
Daniel George
Ir.fd. in Conc.
Charles A. Scott
60.35 (N.T.S.)
108.64 (N.T.S.)
KILGWYN ROAD



Coordinates of A (Ir.fd.) - 0738006mE, 1234010mN
U.T.M. 20, WGS 84 (+/- 4.00m)
G.P.S. (Direct Observation)

See L&S Bk. 1114 Fol. 83

Approved *[Signature]*
Director of Surveys 2011.2.16

SCALE 1:1000

Distances are in METRES

- Coordinates obtained from hand-held G.P.S.
- Denotes Iron put except where otherwise stated
- Bearings are Cassini Grid based on Solar Observations

PLAN of 4 Parcels of land coloured pink in the Ward of Tobago
Containing together three thousand six hundred and ten point eight square metres
Surveyed by me, with due authority, on the 23rd of May 2008 for Joseph Alexander
In accordance with Regulation 25 (1) of The Land Surveyors' Regulations 1998,
I certify that this plan is correct.

Checked by *[Signature]* 14/12/11

[Signature] TTLS