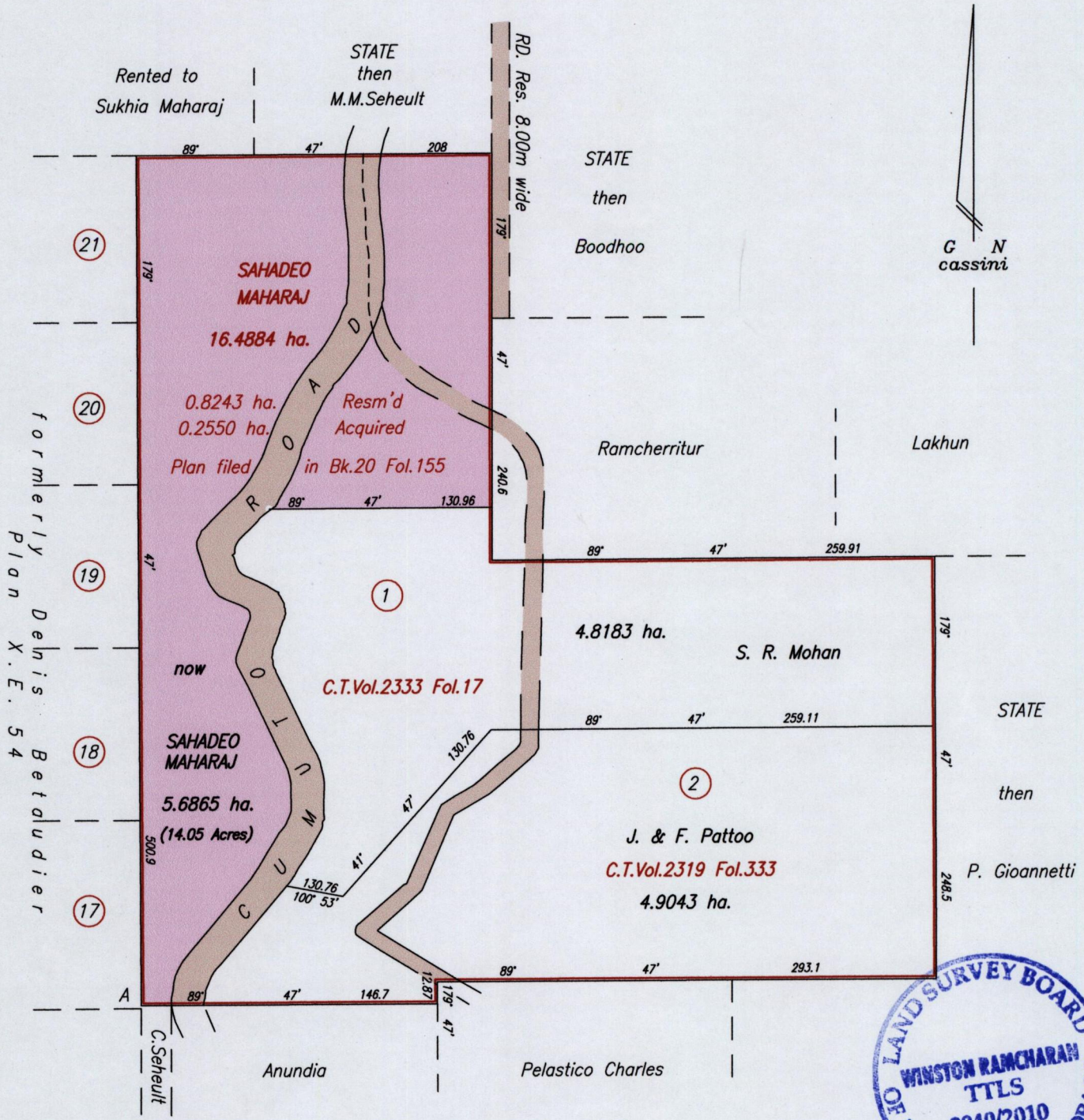
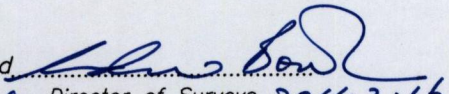


REMAINING PORTION

R.P.O. Vol. 92 Fol. 219  
C.T. Vol. 1903 Fol. 27

Cadastral Sheet E.1.N. 35B  
Ward of Tamana 1/c,1/d  
County of St. Andrew  
Cumuto

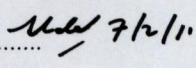


Approved   
 Director of Surveys 2011.2.16

Bk.997 Fol.122  
 A N 1164975 Hand Held GPS +/- 5m  
 E 698672 UTM proj. WGS84 Zone 20

SCALE 1/3000  
 Distances are in metres

This is a true copy of a diagram of sixteen point four eight eight four hectares originally transferred to Sahadeo Maharaj, shewing a portion coloured pink and containing five point six eight six five hectares being the remainder after two (2) previous transfers and one (1) acquisition and one (1) resumption of another portion of the land. In accordance with regulation 25 (1) of the Land Surveyors' Regulations 1998, I certify that this plan is correct.

Checked by.....  7/2/11  
 Entered on.....  
 Winston Ramcharan  
 Trinidad & Tobago Land Surveyor 17<sup>th</sup> November 2010