

Remaining Portion Plan

Cadastral Sheet 16D C.17.L.

R.P.O. Vol. 494

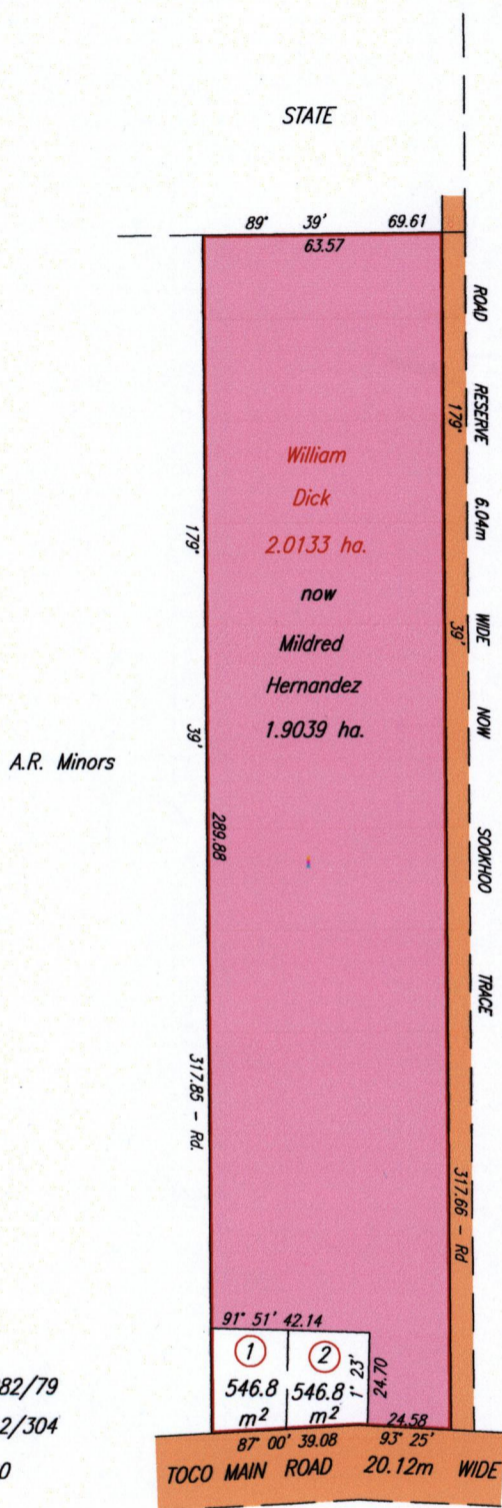
Fol. 282

Ward of Matura 3/c

Ct. Vol. 5507

Fol. 433

County of St. Andrew



Coordinates of H (I.r.f.d.): 0709659mE, 1179964mN
 U.T.M. 20 WGS 84 (+/- 5.00m)
 G.P.S. Direct Observation

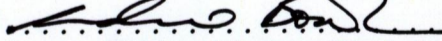
LOT#	CT.	Vol.	NAME
①	4161	153	Rasheed Baksh
②	4161	147	Rasheed Baksh



See Bk. 1282/79
 See Bk. 212/304
 S.O. 522/20

SCALE 1:2000

Distances are in METRES

Approved 
 Director of Surveys 2011.2.16

This is a true copy of a diagram of two point zero one three three hectares originally transferred to William Dick showing a portion coloured pink and containing one point nine zero three nine hectares being the remainder after two previous transfers of other portions of the land.

In accordance with Regulation 25 (1) of The Land Surveyors' Regulations 1998,

I certify that this plan is correct

Checked by  TTLS

Entered on

Trinidad & Tobago Land Surveyor

2nd February 2011

Original Bk. 1282: 79

Ct. VOLUME 5507 FOLIO 433 - MILDRED HERNANDEZ



1376/35