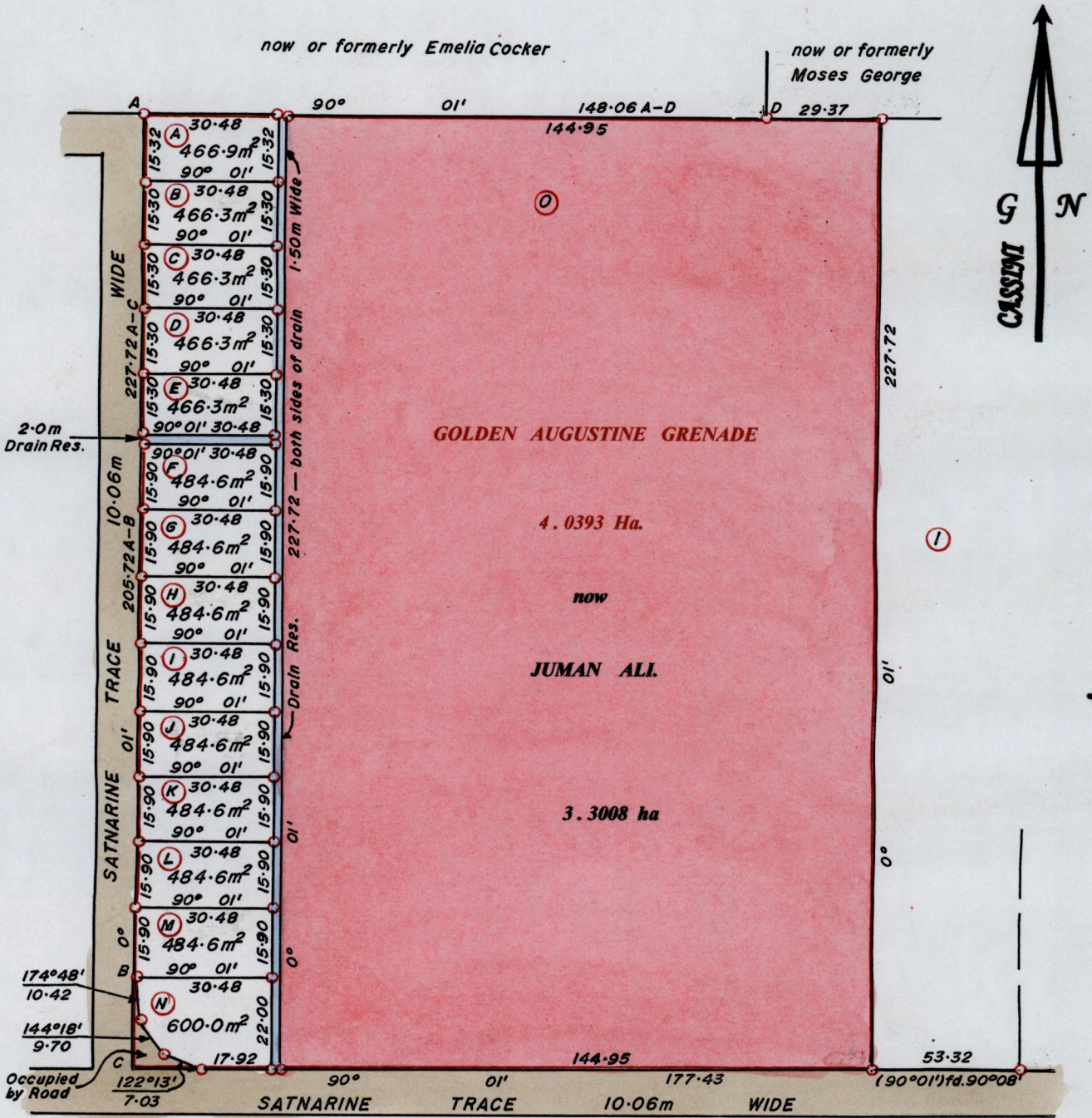


R.P.O Vol. 235 Fol. 475
C.T. Vol. 3018 Fol. 351

Ward of Siparia.
County of St. Patrick.
Cadastral Sheet G.13.P. 63F
4/c;4/d



C — 1122609 mN, 672947 mE
UTM 20, WGS 84 (+/-5.0m)
GPS Handheld Direct Obs.



Bk. 1333 : 106.
Bk. 424 : 63.

SCALE 1 : 1500.
Distances are in METRES

Approved *[Signature]*
Director of Surveys. 2011.1.27

o Denotes Irons fd. except otherwise stated
Bearings are Cassini Grid based on Solar Observations.

PLAN of a Parcel of land coloured in PINK in the Ward of Siparia.
Containing three point three zero zero eight hectares.
Surveyed by me, with due authority, in July 2010.
In accordance with Reg. 25(1) of the Land Surveyors' Regulations 1998,
I certify that this plan is correct.

Checked by *[Signature]* 24/1/2011

Entered

[Signature]
Trinidad and Tobago Land Surveyor. 11 October 2010