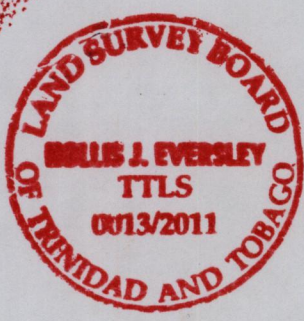
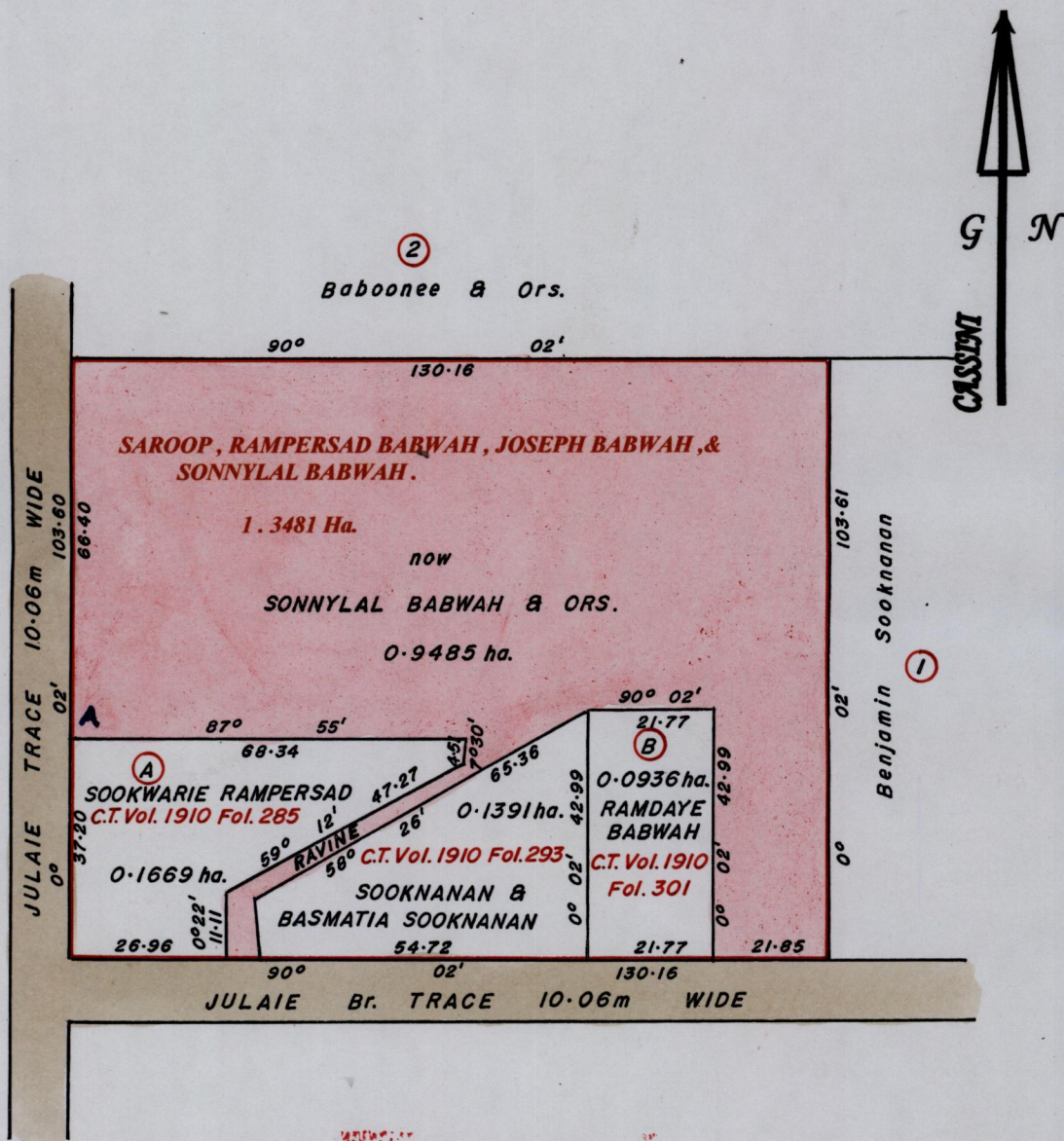


REMAINING PORTION

R.P.O Vol. 156 Fol. 317
C.T. Vol. 1222 Fol. 155

Ward of Siparia.
County of St. Patrick.
Cadastral Sheet G.18. C. 73C
1/b



A
1120757 mN, 671010 mE.
U.T.M. 20, WGS 84 (+/-5.0m)
GPS Handheld Direct O

Bk. 903 : 9.
" 1196 : 29
" 1014 : 55

SCALE 1 : 1250.
Distances are in METRES

Approved *[Signature]*
Director of Surveys. 2011-9-20

This is a true copy of a diagram of one point three four eight one hectare, Originally transferred to SAROOP, RAMPERSAD BABWAH, JOSEPH BABWAH, & SONNYLAL BABWAH, showing a portion, Coloured pink and containing zero point nine four eight five hectare, being the remainder, after three previous transfers of another portion of the land. In accordance with Reg. 25(1) of the Land Surveyors' Regulations 1998, I certify that this plan is correct.

Checked by *[Signature]* 15/9/11

Entered

[Signature]
Trinidad and Tobago Land Surveyor. *[Signature]* 2011.