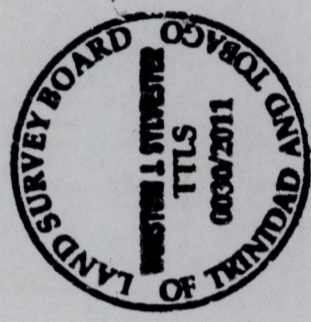
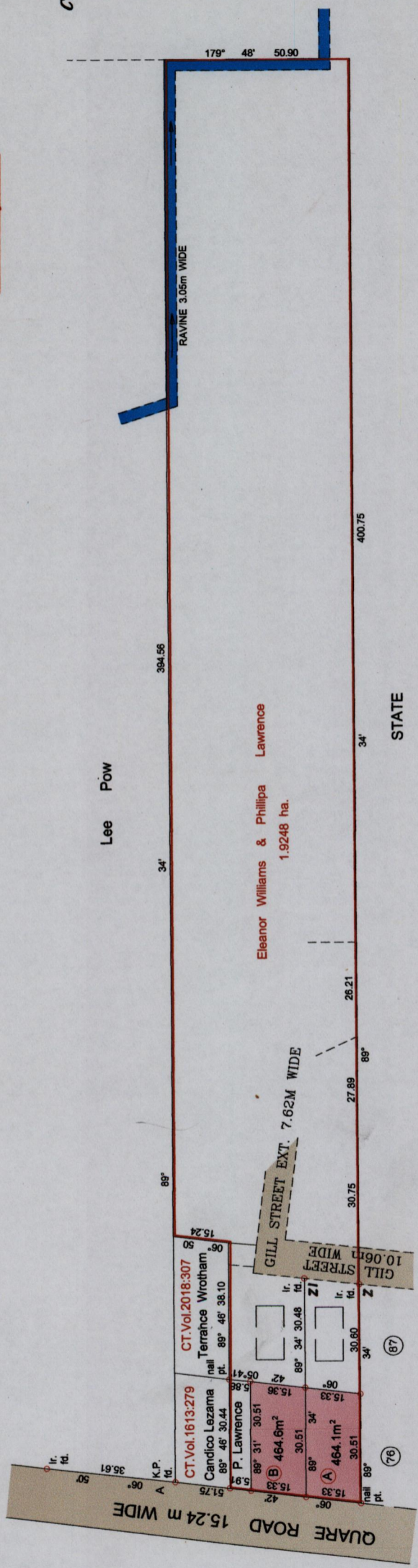


155  
S/c

Cadastral Sheet C.16.I.  
Ward of Valencia.  
County of St. Andrew.  
Vide Bk. 1186 fol. 258  
Bk. 1187 fol. 62

C/N  
Cassini



Z-ZI 06° 13' 15.33

N. 1,178,572  
A= E. 0,697,220

SCALE: 1/1500

Bearings are based on solar observation. Distances are in Metres.

Note: To obtain compass bearing subtract/add minutes in the Ward of Valencia.

PLAN of 2 parcels of land coloured pink in the Ward of Valencia.

Containing together nine hundred and twenty eight point seven square metres.

Surveyed by me, with due authority, in October, 2007 for Jagdish Semurath

In accordance with regulation 25 (1) of the Land Surveyors' Regulations 1998,

I certify that this plan is correct.

Checked by Mark 15/9/11

Entered on.....

Trinidad & Tobago Land Surveyor.....19.08.2011

Approved [Signature]  
Director of Surveys .2011.7.20

Coordinates are obtained by hand held G.P.S.

W.G.S. 84 Zone 20(±) 5m

Denotes iron put unless otherwise stated

R.P.O. Vol. 434  
C.T. Vol. 2824

Process ID# 42781