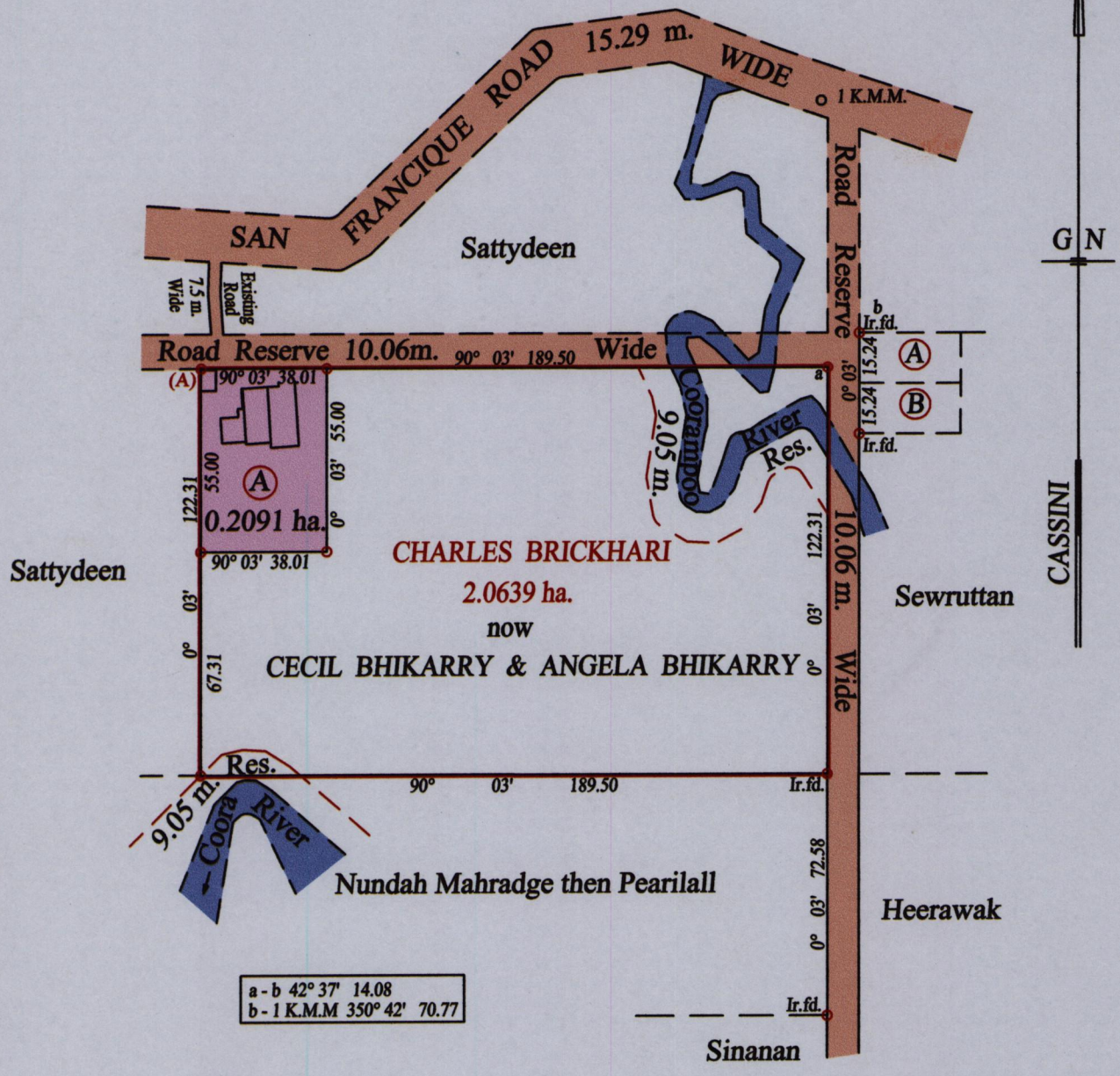


Process ID # 39473
R.P.O. Vol. 109 Fol. 225
C.T. Vol. 758 Fol. 347

Ward of Siparia
County of St. Patrick
Cadastral Sheet (G.13.I.) 63.E.
4/b



a - b 42° 37' 14.08
b - 1 K.M.M 350° 42' 70.77

Vide Bk. 468 fol. 39
Vide Bk. 1163 fol. 35
Vide Bk. 466 fol. 316
Vide Bk. 944 fol. 16 & 17

At Station (A)
E 0667040
N 1124870
Reading taken with
Handheld G.P.S.
U.T.M. Zone 20
Naparima
± 10 m.

Approved *[Signature]*
Director of Surveys 2011.9.13

○ Denotes Iron put except stated otherwise.
Note: Bearings are cassini grid based on solar observations Distances are in metres
PLAN of a Parcel of land coloured pink in the Ward of Siparia
Containing zero point two zero nine one hectare
Surveyed by me, with due authority, in March 2003 for Mr. Bhikarry
In accordance with Regulation 25 (1) of the Land Surveyor's Regulations 1998,
I certify that this plan is correct.

SCALE : 1:2000



Checked by *[Signature]* 10.8.2011

Entered on 04-12-2011 Trinidad & Tobago Land Surveyor 10.07.2011