

1376

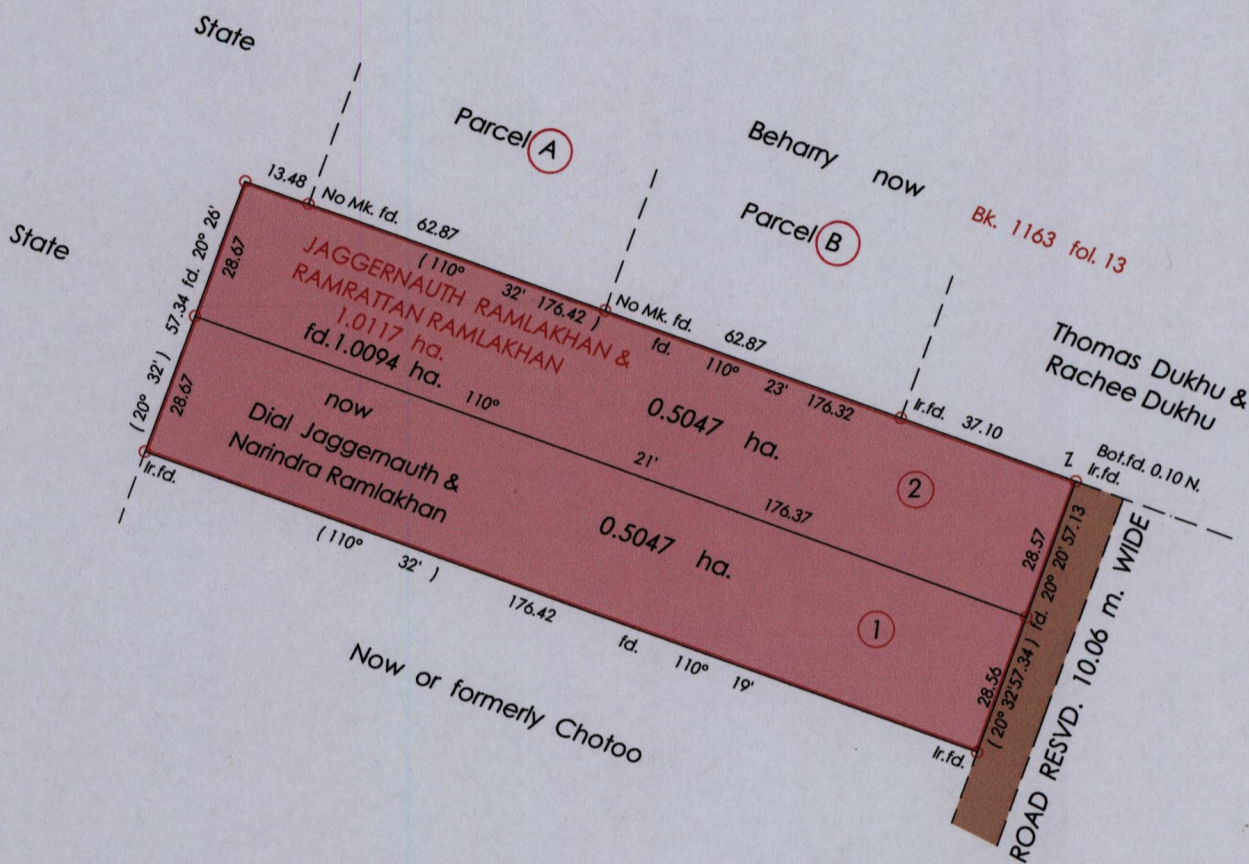
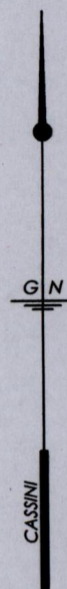
206

R.P.O. Vol. 235 fol. 133  
C.T. Vol. 1975 fol. 327

Ward of Naparima  
County of Victoria  
Cadastral Sheet (G.14. I.)  $\frac{63 F}{1/b \& 2/a}$

Bk. 999 fol.14  
Duplicate Plans

Z = N. 1126540 E. 671609  
U.T.M. Zone 20 Naparima +/- 5.00 m.  
Hand Held G.P.S.



Approved [Signature]  
Director of Surveys 2011.9.12

○ Denotes Iron Put Except  
Otherwise Stated

SCALE : 1: 1500

Note: Bearings are cassini grid based on solar observations Distances are in metres  
PLAN of 2 Parcels of land coloured pink in the Ward of Naparima  
Containing together one point zero zero nine four hectares  
Surveyed by me, with due authority, in May. 2009  
In accordance with Regulation 25 (1) of the Land Surveyors' Regulations 1998,  
I certify that this plan is correct.

Checked by [Signature] 5/9/11

[Signature]  
2<sup>nd</sup> Dept

MINISTRY OF AGRICULTURE  
Survey & Mapping D  
AUG 03 2011  
LANDS & MARINE RESOURCES

Entered on ..... Trinidad & Tobago Land Surveyor ..... 2011