

Process ID# 40846

R.P.O. Vol. 562

C.T. Vol. 2656

U.P.R.N. No. ....

Fol. 127

Fol. 217

1376

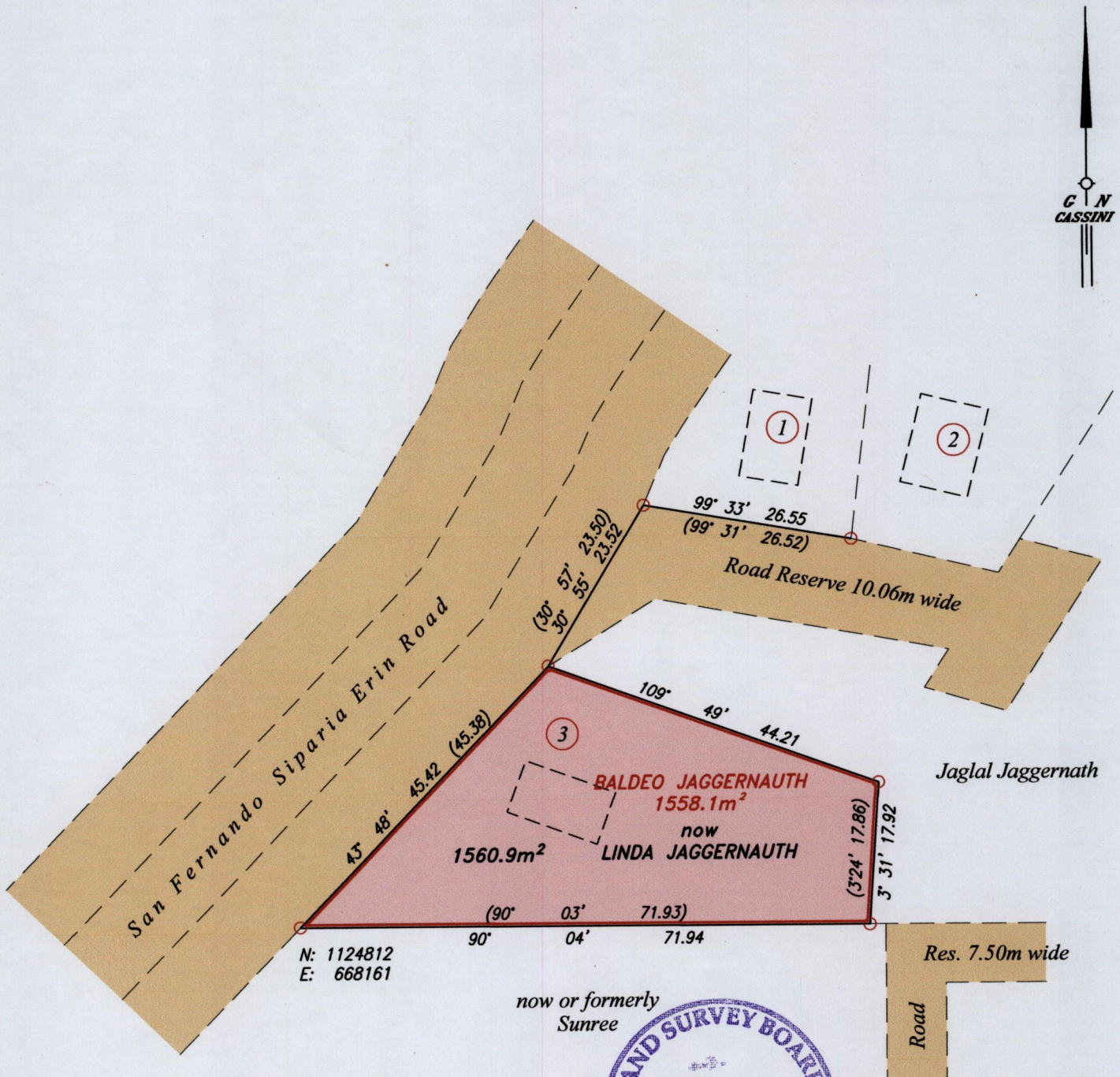
Ward of Siparia

County of St. Patrick

Cadastral Sheet (G.13.1.), 63E/2/d

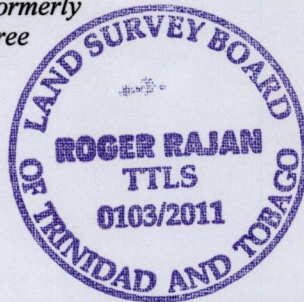
2015

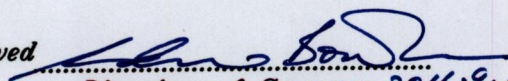
CHARLO VILLAGE JUNCTION



N: 1124812  
E: 668161

now or formerly  
Sunree



Approved   
 Director of Surveys 2011.9.12

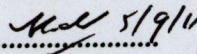
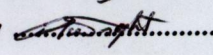
Coordinate was obtained by Handheld GPS  
 Naparima Datum (+/-5m)  
 UTM Zone 20

Vide: Bk.1124 Fol. 184

o Denotes Iron found except otherwise stated  
 Bearings are Cassini Grid based on Solar Observations

SCALE ~ 1 : 750  
 Distances are in metres

Plan of a Parcel of land coloured pink in the Ward of Siparia  
 Containing one thousand five hundred and sixty point nine square metres.  
 Surveyed by me, with due authority, in February 2011 at the request of Linda Jaggernauth  
 In accordance with Regulation 25 (1) of the Land Surveyors Regulations 1998,  
 I certify that this plan is correct.

Checked by  5/9/11  
 Entered by 

Trinidad & Tobago Land Surveyor 23<sup>rd</sup> August 2011

