

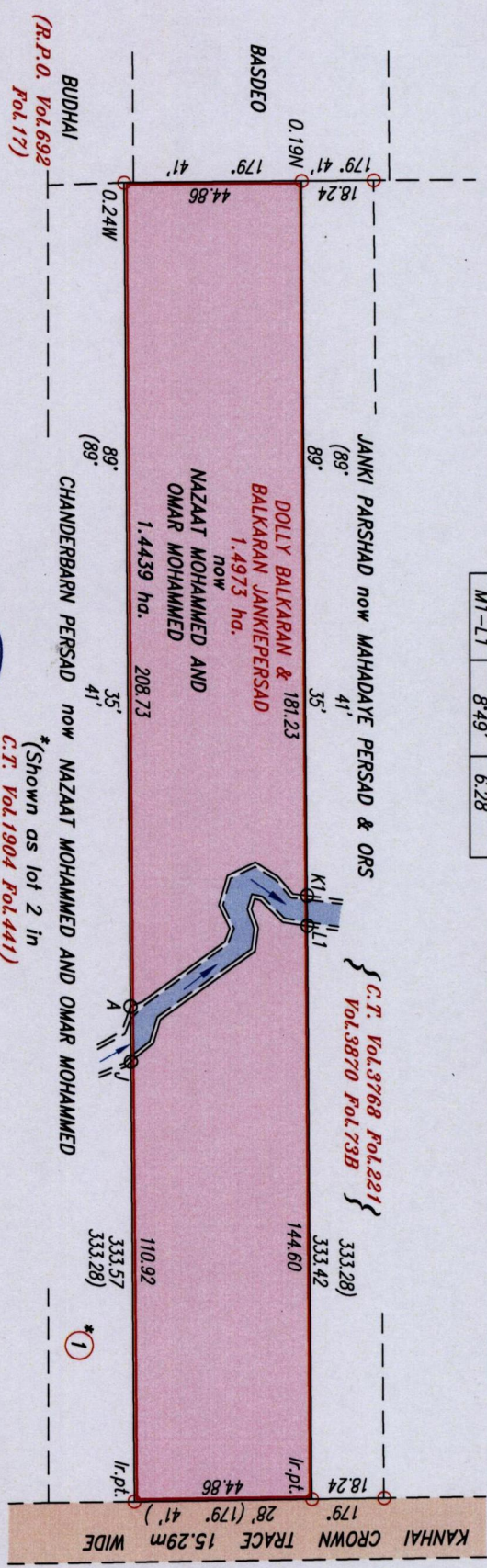
R.P.O Vol. 692 Fol. 81
C.T. Vol. 3870 Fol. 75

Coordinates
From found A : N 1124617
E 677253

Datum Definition : U.T.M. Zone 20 Naparima
Source : Extracted From Ward Sheet

STATION	BEARINGS	DISTANCE
B1-A	157°51'	3.41
C1-B1	144°04'	25.43
D1-C1	111°19'	3.66
E1-D1	64°40'	6.44
F1-E1	105°59'	7.74
G1-F1	154°47'	7.89
H1-H1	32°27'	6.89
H1-J1	50°09'	5.58
J1-K1	7°22'	3.70
K1-L1	89°35'	7.59
M1-L1	8°49'	6.28

STATION	BEARINGS	DISTANCE
N1-M1	44°15'	7.97
P1-N1	12°28'	1.46
P1-Q1	106°52'	2.73
Q1-R1	70°15'	5.02
R1-S1	97°39'	6.00
S1-S2	144°07'	5.79
S2-T1	144°29'	23.64
T1-U1	106°32'	6.30
U1-J	141°22'	7.27
A-J	89°35'	13.92



Approved: *[Signature]*
Director of Surveys 2011.9.12

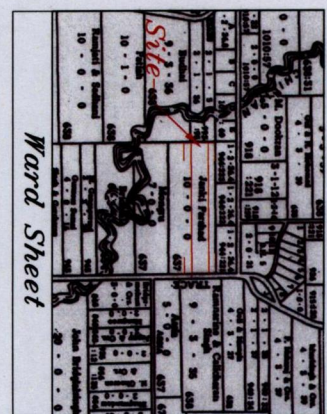
○ Denotes Iron found except stated otherwise.

Note: Bearings are U.T.M. Grid based on solar observations.

Plan of a Parcel of land coloured pink in the Ward of Moruga containing one point four four three nine hectares
Surveyed by me, with due authority, in June 2009.
In accordance with Regulation 25(1) of the Land Surveyors' Regulations 1998,
I certify that this plan is correct.

Checked by: *[Signature]* 2/9/2011

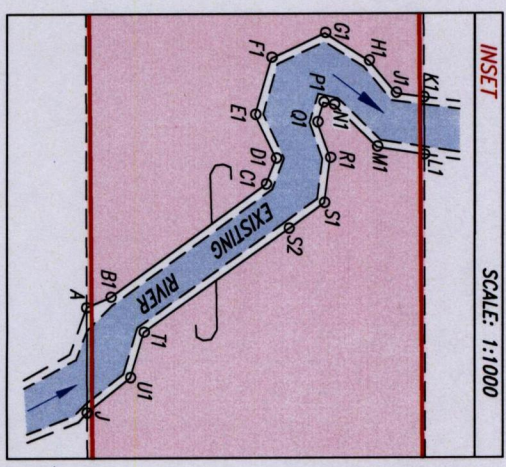
Entered



U.T.M. Grid

Ward of Moruga
County of Victoria
Cadastral Sheet (G.14.J), 64D
4/a

Parcel Address: Kanhai Crown Trace,
Moruga.



R.P.O. Vol. 3870 Fol. 73B
Ref: Bk. 637 Fol. 112
Bk. 1233 Fol. 177
SCALE: 1:17750

Distances are in metres.



Trinidad & Tobago Land Surveyor 10th August 2011