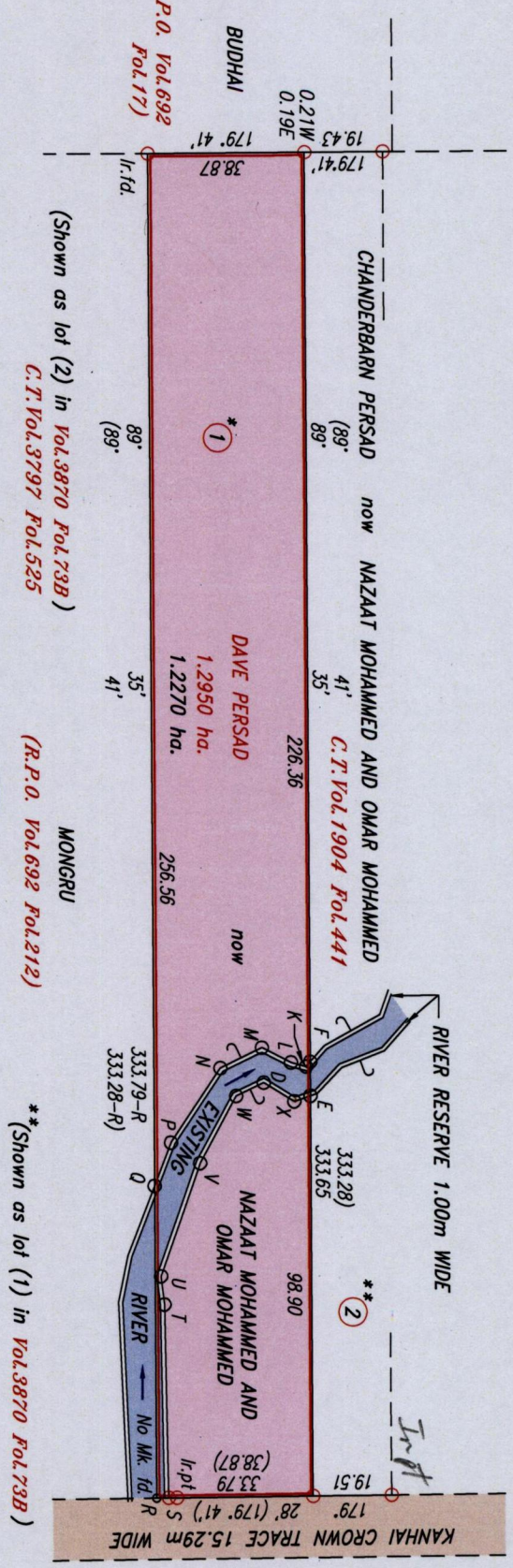
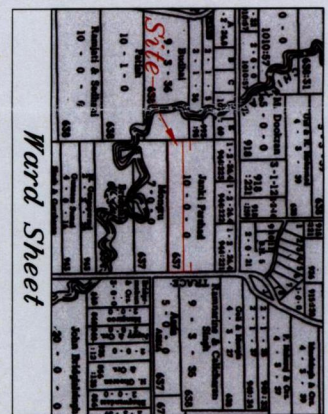


R.P.O Vol. 692 Fol. 81
C.T. Vol. 3797 Fol. 525

Coordinates
From found B : N 1124598
E 677256

Datum Definition : U.T.M. Zone 20 Naparima
Source : Extracted From Ward Sheet

Ward of Moruga
County of Victoria
Cadastral Sheet (G.14.J), 64D
4/a



STATION	BEARING	DISTANCE
F-K	131°28'	1.54
L-K	15°05'	3.90
M-L	27°08'	8.10
M-N	154°04'	11.44
N-P	123°47'	22.01
P-Q	110°46'	11.41
Q-R	89°35'	77.23
S-R	179°28'	2.96
Ir.pt.-S	179°28'	2.04

STATION	BEARING	DISTANCE
T-S	88°46'	47.66
U-T	82°57'	7.08
V-U	109°00'	29.69
W-V	118°25'	18.77
D-W	154°29'	7.57
D-X	31°28'	8.89
E-X	161°23'	4.21
F-E	89°35'	8.38

Parcel Address: Kanhai Crown Trace, Moruga.
U.T.M.



Approved: *[Signature]*
Director of Surveys 2011.9.12

○ Denotes from found except stated otherwise.

Note: Bearings are U.T.M. Grid based on solar observations.

Plan of a Parcel of land coloured pink in the Ward of Moruga containing one point two two seven zero hectares Surveyed by me, with due authority, in June 2009.

In accordance with Regulation 25(1) of the Land Surveyors' Regulations 1998, I certify that this plan is correct.

Checked by: *[Signature]* 2/9/2011
Entered

[Signature]
Trinidad & Tobago Land Surveyor 5th April 2011