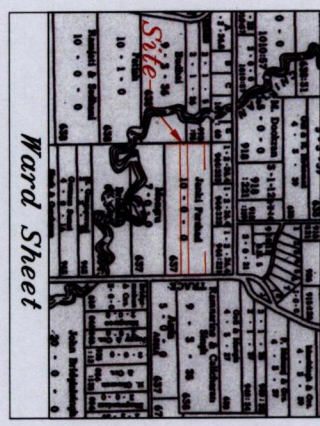


R.P.O Vol. 692 Fol. 81
C.T. Vol. 1904 Fol. 441

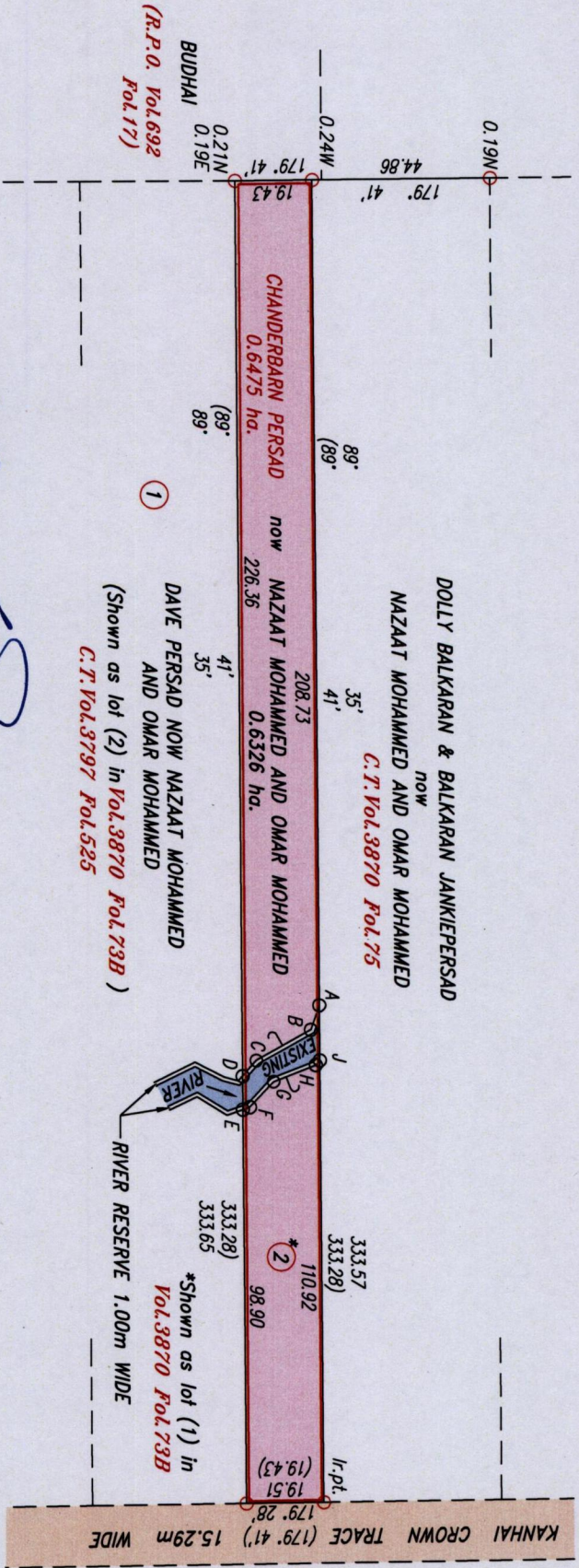
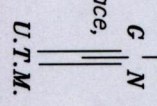
Coordinates
From found A : N 1124617
E 677253

Datum Definition : U.T.M. Zone 20 Naparima
Source : Extracted From Ward Sheet

Ward of Moruga
County of Victoria
Cadastral Sheet (G.14.J), 64D
4/0



Parcel Address: Kanhai Crown Trace,
Moruga.



STATION	BEARING	DISTANCE
A-B	109°08'	6.54
B-C	150°39'	15.73
C-D	131°28'	5.23
J-H	131°30'	1.52
H-G	158°52'	11.40
G-F	133°13'	8.72
F-E	161°23'	1.89
A-J	89°35'	13.92
D-E	89°35'	8.39

R.P.O. Vol.1904 Fol.425
Ref.: Bk.637 Fol.112
Bk.1233 Fol.177

SCALE: 1:2500
Distances are in metres.

Approved: Director of Surveys 2011.9.12

○ Denotes Iron found except stated otherwise.
Note: Bearings are U.T.M. Grid based on solar observations.
Plan of a Parcel of land coloured pink in the Ward of Moruga containing zero point six three two six hectare
Surveyed by me, with due authority, in June 2009.
In accordance with Regulation 25(1) of the Land Surveyors' Regulations 1998,
I certify that this plan is correct.

Checked by: 2/9/2011

Entered:

Grant

Trinidad & Tobago Land Surveyor 10th Aug. 2011



1376 1376