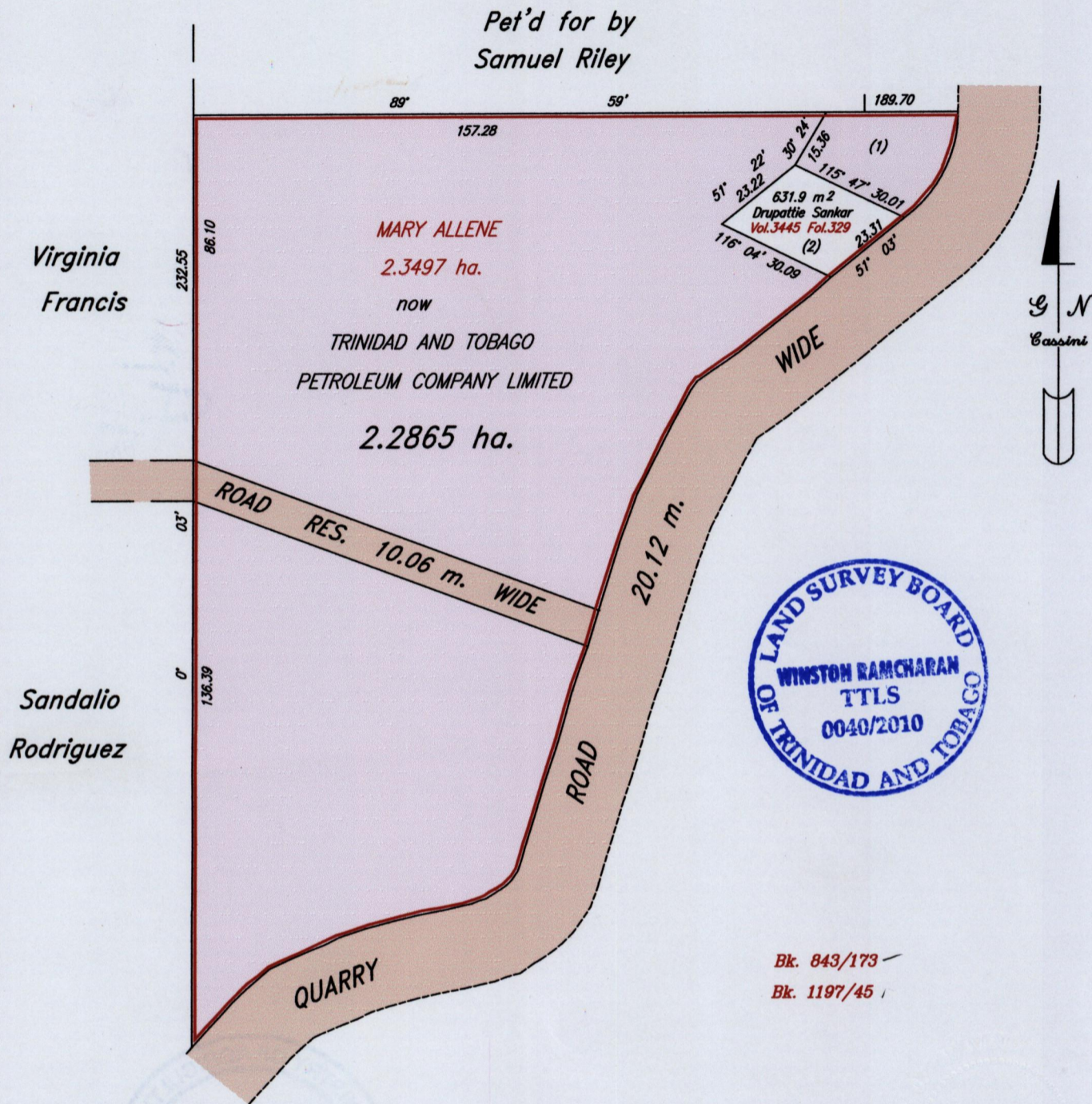


R.P.O.Vol. 230  
C.T.Vol.  
U.P.R.N.

Fol. 83  
Fol.

Ward of Siparia  
County of St. Patrick  
Cadastral Sheet G.17.E. 73A  
2/c,4/a



Approved

*[Signature]*  
Director of surveys 2010.12.30

SCALE:- 1:1500

Distances are in metres.

Note: To obtain compass bearing subtract 02 minutes

This is a true copy of a diagram of two point three four nine seven hectares originally granted to MARY ALLENE, shewing a portion coloured pink and containing two point two eight six five hectares being the remainder after one previous transfer of another portion of land. In accordance with rule 25 (1) of the Land Surveyors' Regulations 1998, I certify that this plan is correct.

Checked by *[Signature]* 20/12/10

Entered on.....Trinidad and Tobago Land Surveyor *[Signature]* 29<sup>th</sup> November.....2010