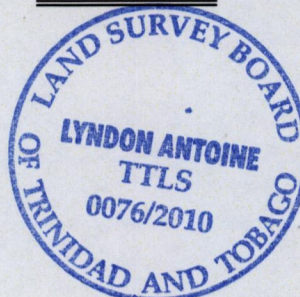


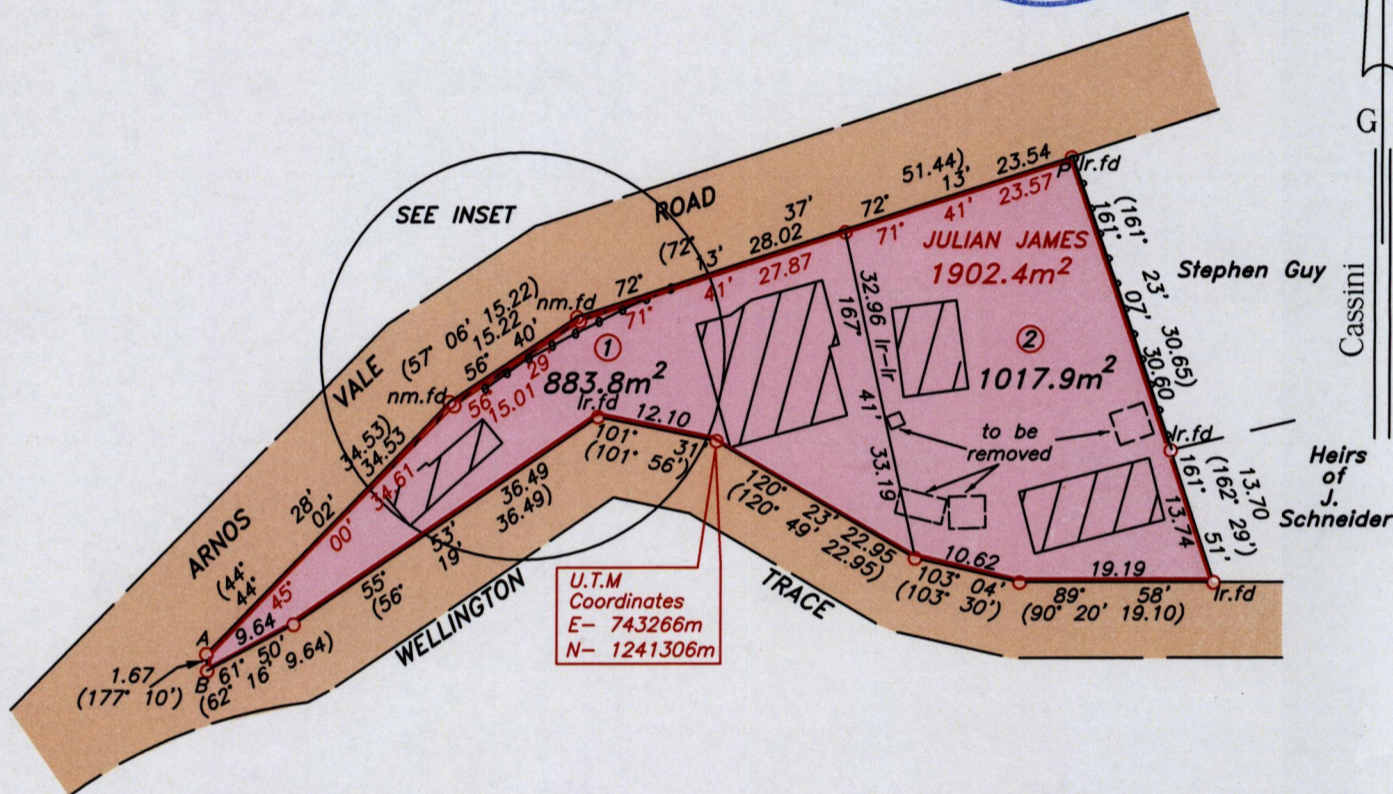
U.P.R.N.....

R.P.O Vol. Fol.  
C.T Vol. 3628 Fol. 415

Cadastral Sheet 1.12.M <sup>1C</sup>/<sub>2/c/3</sub>  
Ward of Tobago  
Parish of St. David  
**PLYMOUTH**



Vide Bk.1198 Fol.88

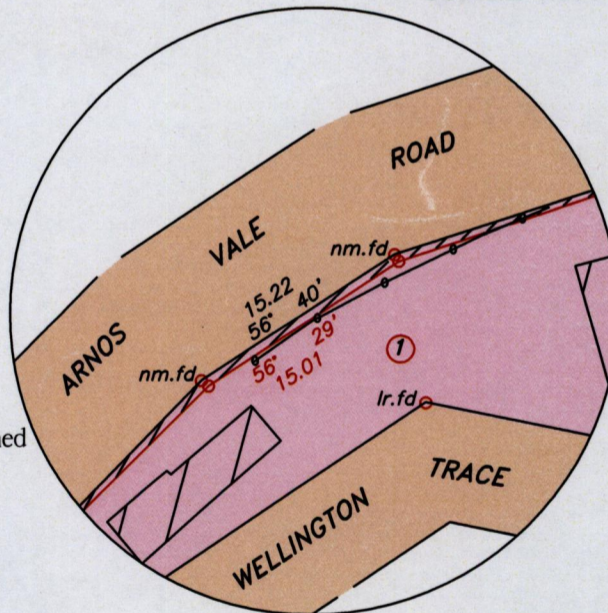


Wire Fence

Hatched area Occupied by Road 30.66m<sup>2</sup>

LINE	AZIMUTH	DISTANCE
A-B	176° 44'	1.67

INSET  
SCALE 1:500



SCALE 1:750

Note- UTM Zone 20 (WGS 84) Coordinates obtained from hand held GPS receiver  
± 6.00m

Approved *[Signature]*  
Director of Surveys 2011.9.2

○ Denotes iron put, except otherwise stated.

Bearings are grid based on solar observations

Distances are in metres

PLAN of 2 parcels of land coloured pink in the Ward of Tobago  
Containing together one thousand nine hundred and one point seven square metres  
Surveyed by me, with due authority on 8th May 2008 for Ferdinand Wheeler

In accordance with Regulation 25 (1) of the Land Surveyors' Regulations 1998, I certify that this plan is correct.

Checked by *[Signature]* 26/8/2011  
Entered.....

*[Signature]*  
Trinidad & Tobago Land Surveyor..... 2nd February..... 2010