

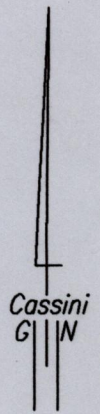
1376

183E

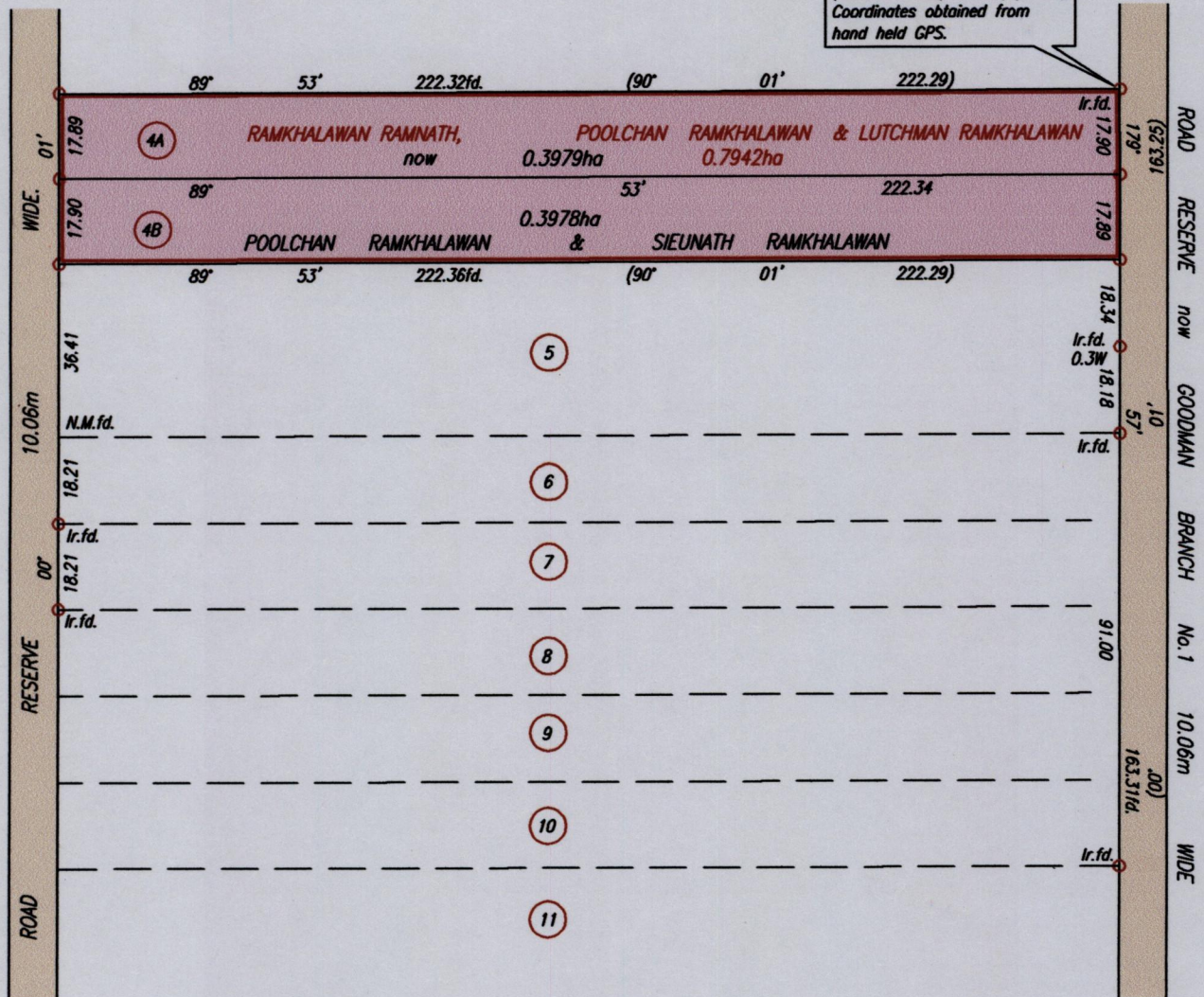
Vol. 5399 Fol. 1
R.P.O. Vol. 207 Fol. 33
C.T. Vol. 1975 Fol. 63

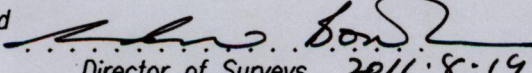
Cadastral Sheet G.18.C. & D. $\frac{73C}{2/a}$
Ward of Siparia
County of St. Patrick.
Rock Road

Ref.: Plan E.G.105



672515mE, 1121635mN
(U.T.M. 20, Naporima (+/-8m)
Coordinates obtained from
hand held GPS.



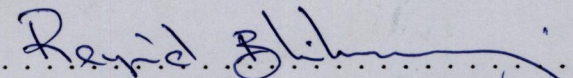
Approved 
Director of Surveys 2011.8.19

SCALE 1:1500
Distances are in Metres

○ Denotes Iron put except otherwise stated.
Bearings are Cassini Grid based on Solar Observations.

PLAN of 2 Parcels of land coloured pink in the Ward of Siparia
Containing together zero point seven nine five seven hectare
Surveyed by me, with due authority, in June, 2009

In accordance with Regulation 25(1) of the Land Surveyors' Regulations 1998,
I certify that this plan is correct.

Checked by  16/8/11

Entered Trinidad & Tobago Land Surveyor 15th June 2011

