

1376

1834

R.P.O. Vol. 33 Fol. 669

C.T. Vol. 3533 Fol. 113

Address - Thomas Ross Rd., & Francis Rd.,

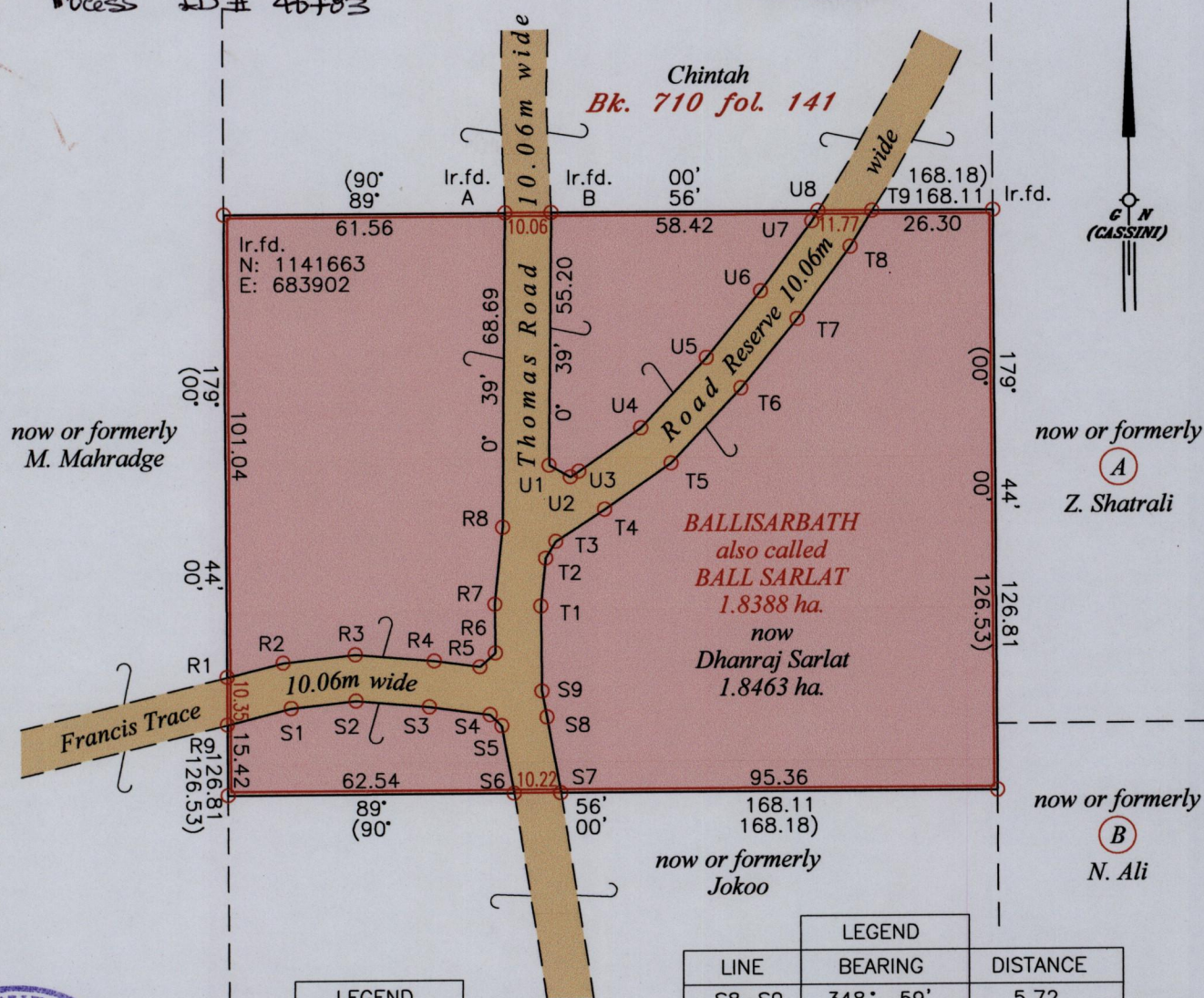
Ward of Savana Grande

County of Victoria

Cadastral Sheet D.24.J., 54B/4/a

New Grant

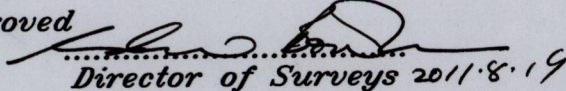
Process ID# 46783



LINE	BEARING	DISTANCE
R1-R2	76 ° 04'	12.61
R2-R3	83 ° 52'	15.86
R3-R4	94 ° 52'	17.33
R4-R5	97 ° 41'	10.09
R5-R6	48 ° 33'	4.54
R6-R7	359 ° 24'	10.65
R7-R8	5 ° 57'	16.94
R9-S1	76 ° 04'	14.37
S1-S2	83 ° 52'	14.21
S2-S3	94 ° 52'	16.11
S3-S4	97 ° 41'	13.43
S4-S5	133 ° 20'	3.50
S5-S6	169 ° 55'	15.00
S7-S8	349 ° 55'	16.86

LINE	BEARING	DISTANCE
S8-S9	348 ° 59'	5.72
S9-T1	359 ° 24'	18.57
T1-T2	5 ° 57'	10.57
T2-T3	31 ° 26'	4.30
T3-T4	56 ° 55'	12.75
T4-T5	55 ° 28'	17.70
T5-T6	43 ° 33'	22.33
T6-T7	39 ° 19'	19.45
T7-T8	36 ° 22'	19.66
T8-T9	31 ° 11'	9.19
U1-U2	118 ° 47'	5.29
U2-U3	56 ° 55'	2.25
U3-U4	55 ° 28'	16.52
U4-U5	43 ° 33'	20.90
U5-U6	39 ° 19'	18.81
U6-U7	36 ° 22'	18.95
U7-U8	31 ° 11'	2.63

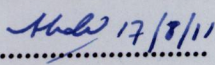
Coordinate was obtained from Hand Held GPS.
Naparima Datum (+/-5m)
UTM Zone 20

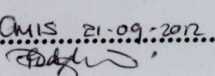
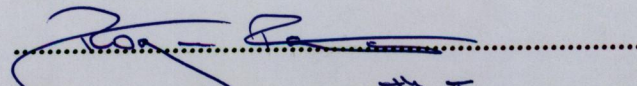
Approved 
Director of Surveys 2011.8.19

Vide: Bk. 320 Fol. 91
Bk. 710 Fol. 91

SCALE 1:1500

○ Denotes Iron put except stated otherwise.
Bearings are Cassini Grid based on Solar Observations
Plan of a seven Parcel of land coloured pink in the Ward of Savana Grande.
Containing one point eight four six three hectares.
Distances are in metres
Surveyed by me, with due authority, in April 2011 at the request of Allan Rampersad.
In accordance with Regulation 25 (1) of the Land Surveyors' Regulations 1998,
I certify that this plan is correct.

Checked by  17/8/11

Entered on  21.09.2011 Trinidad & Tobago Land Surveyor  24th June 2011