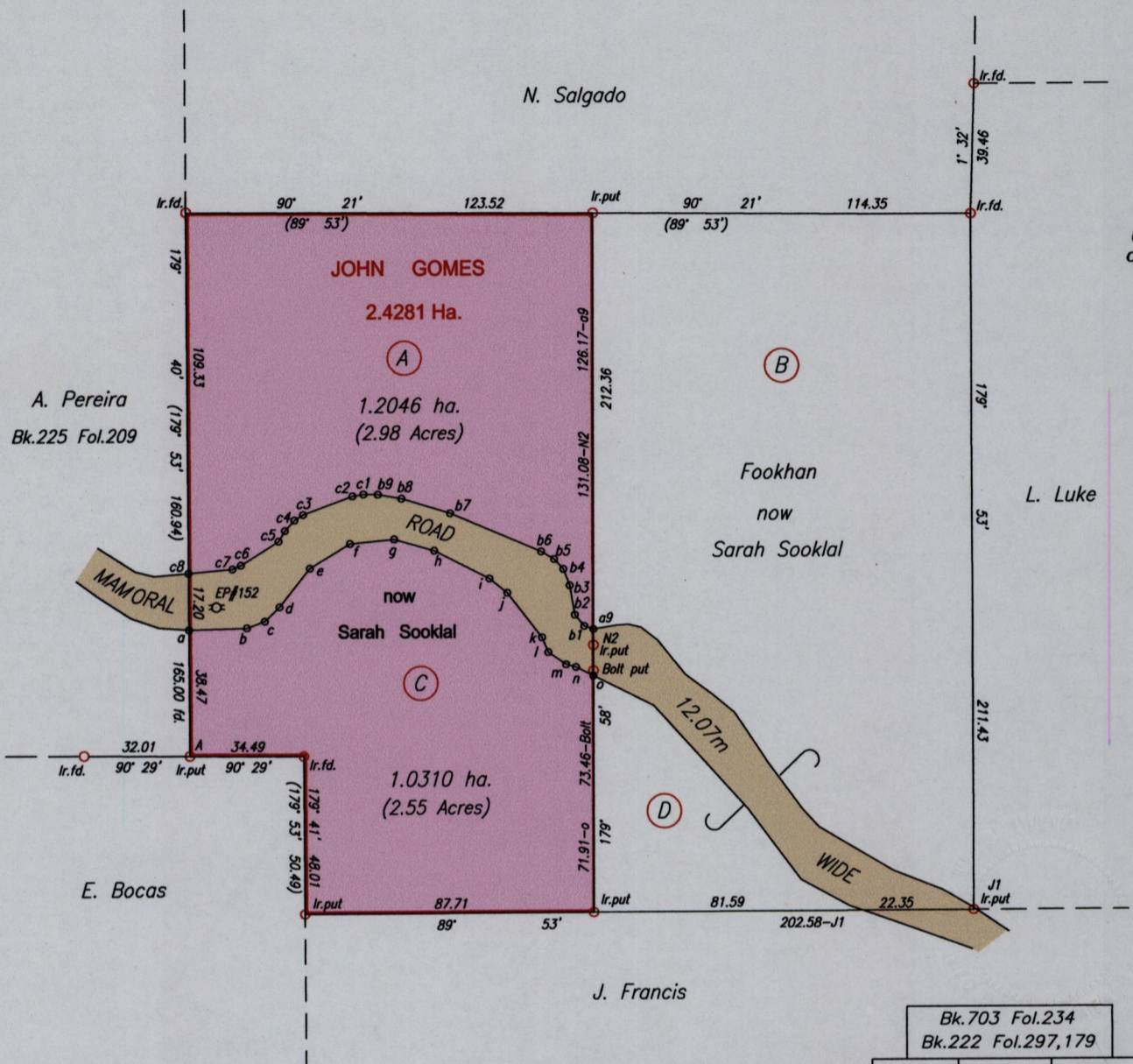


Process ID# 41340

MAMORAL



Resumed for Road 0.1846 ha.

A Ir.put N 1155580 Hand Held GPS
E 688555 Nap.1955 Dat +/-5m

Approved *[Signature]*
Director of Surveys 2011.8.19

Station	Bearing	Distance
a - b	88° 26'	17.53
b - c	69° 45'	5.83
c - d	45° 59'	6.18
d - e	38° 23'	14.86
e - f	58° 45'	14.27
f - g	84° 26'	13.47
g - h	106° 05'	12.67
h - i	117° 01'	18.80
i - j	128° 48'	6.98
j - k	142° 19'	17.20
k - l	156° 52'	4.91
l - m	125° 08'	6.58
m - n	105° 15'	3.10
n - o	116° 45'	5.93
o - a9	0° 02'	14.29
N2 - Bolt put	0° 02'	7.82
A - EP#152	10° 09'	46.08

Station	Bearing	Distance
a9 - b1	288° 13'	2.88
b1 - b2	319° 54'	4.51
b2 - b3	350° 26'	9.03
b3 - b4	338° 46'	5.35
b4 - b5	317° 19'	4.14
b5 - b6	300° 12'	4.57
b6 - b7	293° 02'	30.01
b7 - b8	287° 09'	15.43
b8 - b9	279° 44'	7.29
b9 - c1	270° 55'	4.40
c1 - c2	260° 55'	3.36
c2 - c3	249° 44'	16.02
c3 - c4	237° 54'	3.09
c4 - c5	217° 12'	7.99
c5 - c6	237° 44'	13.48
c6 - c7	246° 25'	2.77
c7 - c8	264° 51'	13.39
c8 - a	179° 40'	17.20

o Denotes N.M.put unless otherwise stated

Bearings are Cassini Grid based on Solar Observations

PLAN of 2 Parcels of land coloured pink in the Ward of Chaguanas
Containing together two point two three five six hectares
Surveyed by me, with due authority, in May 2008

In accordance with Regulation 25 (1) of the Land Surveyors' Regulations 1998,
I certify that this plan is correct.

Checked by *[Signature]* 16/8/2011

[Signature]

Entered on CMIS 17.09.2012

Trinidad & Tobago Land Surveyor 15th July 2011

SCALE 1/2000
Distances are in metres

