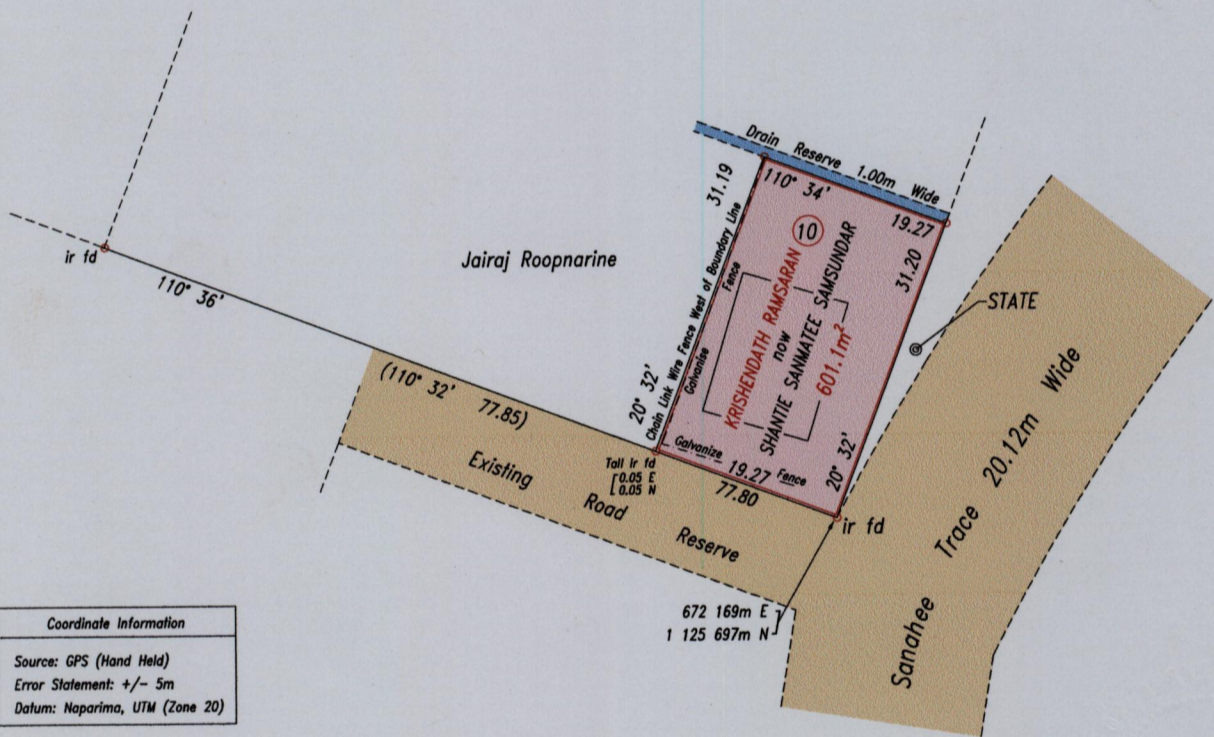


R.P.O. Vol. 106 Fol. 303  
C.T. Vol. 4616 Fol. 237  
U.P.I.N. No.:

Cadastral Sheet G.13.G. 63F  
County of Victoria 2/c  
Ward of Naparima

References: Bk.393 Fol.49  
Bk.1010 Fol.19

G.N.  
Cassini



Coordinate Information
Source: GPS (Hand Held)
Error Statement: +/- 5m
Datum: Naparima, UTM (Zone 20)

SCALE 1: 750

Approved

*[Signature]*  
Director of Surveys 2011.1.18

Distances are in metres

○ Denotes iron pin except otherwise stated

Bearings are Cassini Grid based on Solar Observations

PLAN of a parcel of land coloured pink in the Ward of Naparima  
Containing six hundred and one point one square metres  
Surveyed by me, with due authority, in October 2010

In accordance with Regulation 25(1) of the Land Surveyors' Regulations 1998, I certify that this plan is correct.

Checked by *[Signature]*  
Entered .....

*[Signature]*  
Trinidad & Tobago Land Surveyor 9/11/2010

