

REMAINING PORTION

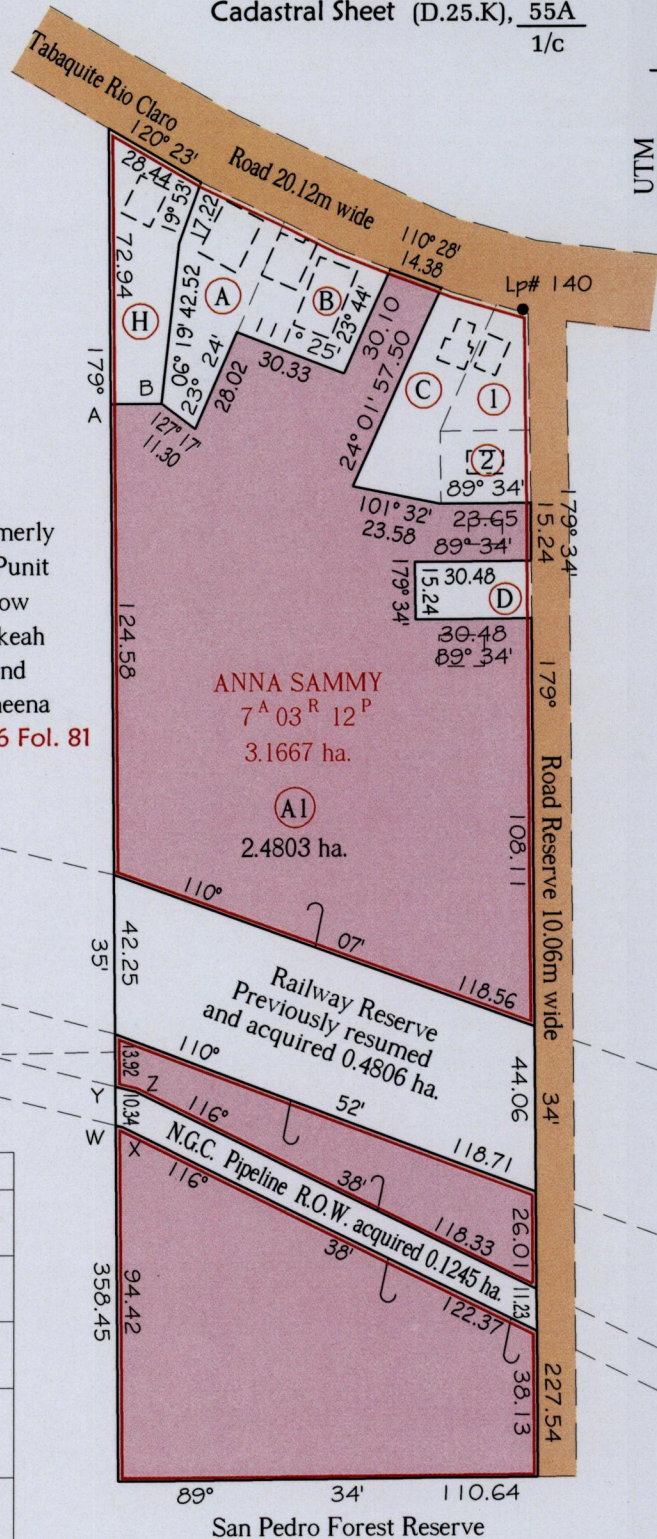
Process ID # 35293
 R.P.O Vol. 197 Fol. 65
 C.T. Vol. 2348 Fol. 311
 C.T. Vol 5472 Fol 177

Ward of Charuma
 County of Nariva
 Cadastral Sheet (D.25.K), 55A
 1/c

UTM



formerly
 C. Punit
 now
 Sukeah
 and
 Ameena
 Bk. 856 Fol. 81



STATION	BEARING	DISTANCE
A-B	89° 34'	13.47
W-X	104° 06'	1.70
Y-Z	104° 06'	5.46

LOT #	AREA	REMARK
A	1114.8m ²	Kennedy Sammy C.T. Vol. 4573 Fol. 439
B	930.4m ²	Gloria Boodan and Sylvan Boodan C.T. Vol. 4551 Fol. 479
C	923.7m ²	Frankie Sammy and Susan Sammy C.T. Vol. 4584 Fol. 107
D	464.5 m ²	Sylvia Ramsaran and Vidya Cassie Carlana Ramsaran C.T. Vol. 4593 Fol. 23
H	1198.2m ²	Anna Sammy for life and after death to Ralphie Sammy C.T. Vol. 5036 Fol. 477
1	522.4m ²	Stacy Marcano and Anthony Marcano C.T. Vol. 4260 Fol. 445
2	465.0m ²	Stacy Marcano and Anthony Marcano C.T. Vol. 4260 Fol. 447

Note - UTM (Nap Zone 20) Coordinates obtained from hand held GPS receiver + 5.00m

Ref:- Bk. 714 Fol. 32
 Bk. 715 Fol. 212
 Plan A.N.79K
 Vol. 4092 Fol. 509
 SCALE 1:2000

Approved

[Signature]
 Director of Surveys 2011-8-15

Note: Bearings are UTM grid based on solar observations Distances are in metres.
 This is a true copy of a diagram of three point one six six eight hectares originally, granted to ANNA SAMMY showing a portion coloured pink and containing two point four eight zero three hectares being the remainder after (7) seven previous transfers, 2 (two) acquisition and 1 (one) resumption of other portions of land. In accordance with Regulation 25(1) of the Land Surveyors' Regulations 1998, I certify that this plan is correct.

Checked by *[Signature]* 2011-07-14

Entered on *[Signature]* 15-08-2011

[Signature]
 Trinidad & Tobago Land Surveyor 29.06.2011