

CT. Vol. 549C Fol. 39
R.P.O. Vol. 110 Fol. 427
C. of T. 4344 Fol. 495

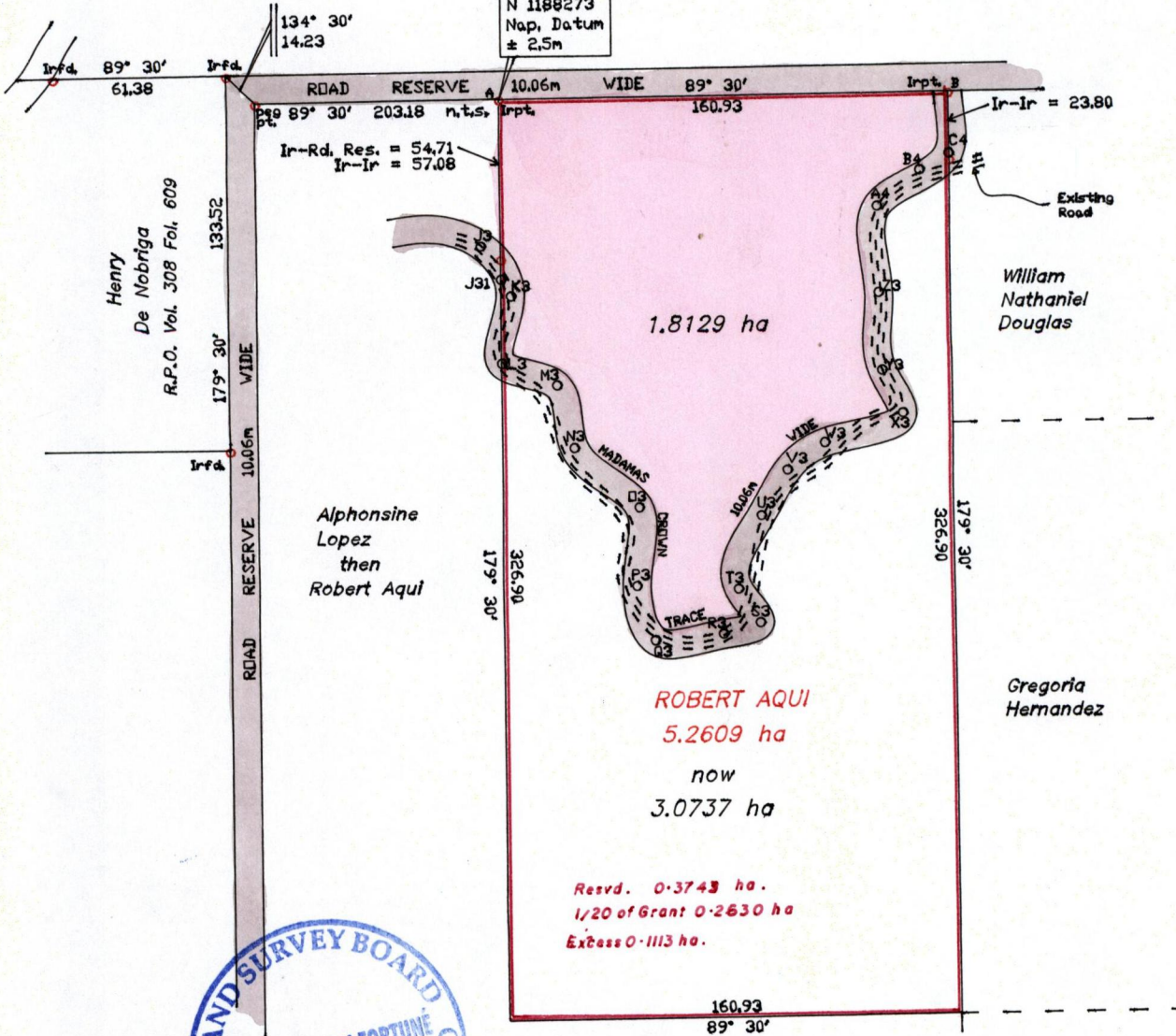
Ward of Blanchisseuse

County of St. George

Cadastral Sheet B.10.N. $\frac{14C}{2/b}$

Ref. S.O. 65/1912

E 619055
N 1188273
Nap. Datum
± 2.5m



G N
U.T.M.



ROBERT AQUIL
5.2609 ha
now
3.0737 ha

Resvd. 0.3743 ha.
1/20 of Grant 0.2630 ha
Excess 0.1113 ha.

Sta.	Bear.	Dist.	Along Centreline Road Reserve 10.06m Wide (S/O 65/1912)
B - C4	179 30'	22.13	
C4 - B4	241 10'	11.87	
B4 - A4	230 15'	19.92	
A4 - Z3	178 58'	30.98	
Z3 - Y3	177 57'	27.56	
Y3 - X3	153 44'	16.90	
X3 - W3	249 32'	29.77	
W3 - V3	234 24'	16.70	
V3 - U3	209 39'	18.91	
U3 - T3	198 02'	27.36	
T3 - S3	146 07'	14.28	
S3 - R3	253 05'	13.88	
R3 - Q3	265 07'	24.54	
Q3 - P3	341 12'	20.32	
P3 - O3	2 00'	27.96	
O3 - N3	313 09'	31.78	
N3 - M3	344 45'	23.13	
M3 - L3	291 30'	21.12	
L3 - K3	7 48'	24.14	
K3 - J31	328 56'	6.95	
J31 - A	359 30'	64.59	
K3 - J3	328 56'	20.92	

Approved
[Signature]
Director of Surveys 2011.8.15

SCALE 1/2500

Distances are in metres

Note: Bearing based on Solar Observations
Note: To obtain Cassini Grid +18 minutes

PLAN of a Parcel of land coloured pink in the Ward of Blanchisseuse
Containing one point eight one two nine hectares
Surveyed by me with due authority in March & April 2009 for Felix Thomas
In accordance with Reg. 25(1) of the Land Surveyors' Regulations 1998,

I certify that this plan is correct.

Checked by *[Signature]* 2011.07.13

Entered..... Trinidad & Tobago Land Surveyor. *[Signature]* 2010

