

R.P.O. Vol. 680 Fol 563  
 C.T Vol. 3867 Fol 437

Bk: 497 folio: 241  
 Bk: 1233 folio: 171  
 Bk: 1148 folio: 04  
 Bk: 631 folio: 347

Cadastral Sheet H. I. G. & H., 55D  
 Ward of Charuma  
 County of Nariva

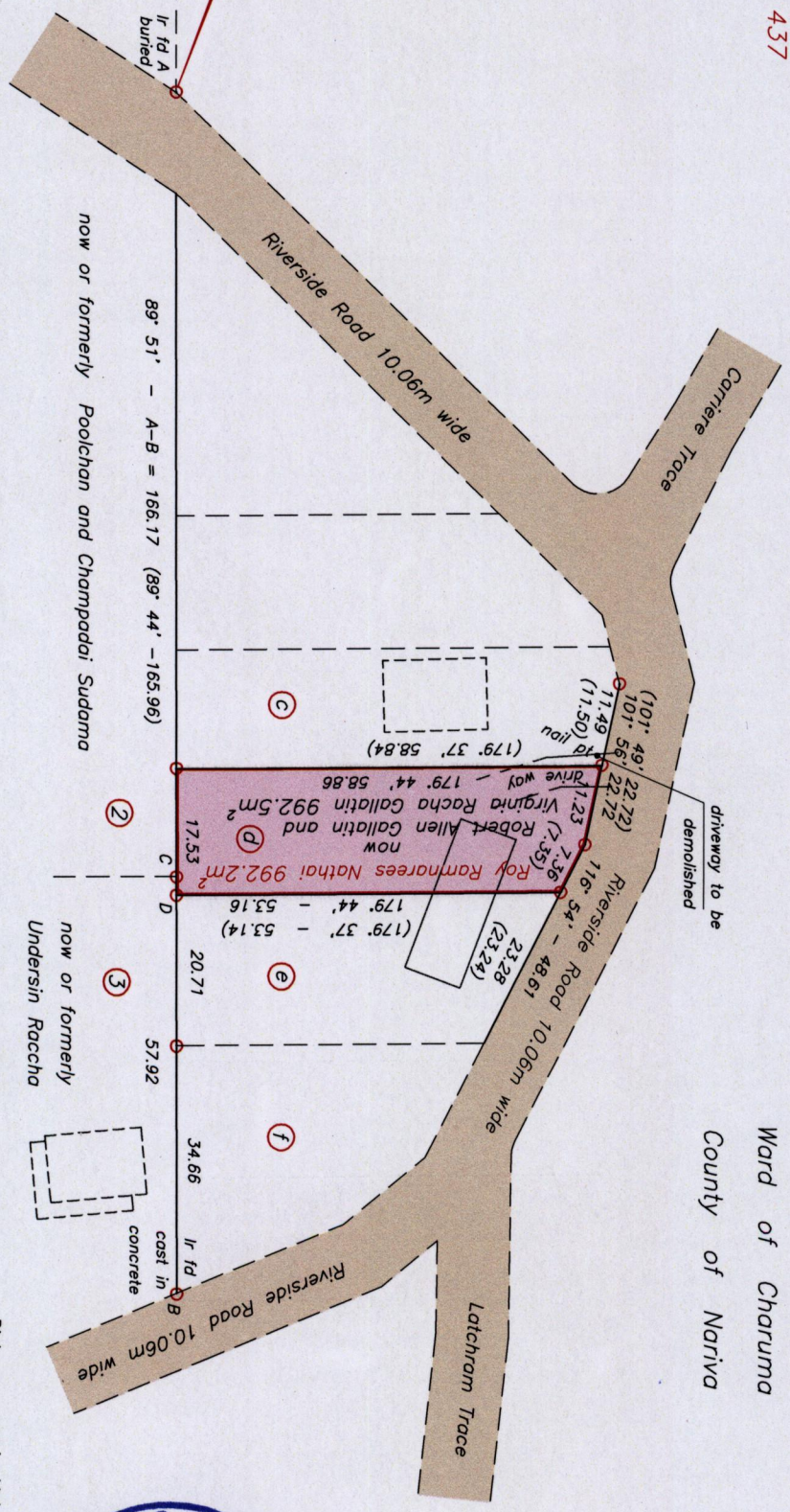
Coordinate Station Ir fd  
 1161133mN, 682226mE  
 U.T.M. 20 WGS 84 ( $\pm 6.0m$ )

Approved  
 Director of Surveys  
 2011.8.16

Denotes Iron Put unless otherwise stated  
 Bearings are Cassini Grid based on Solar Obs.

PLAN of one parcel of land coloured pink in the Ward of Charuma  
 Containing nine hundred and ninety two point five square metres  
 Surveyed by me, with due authority, in November 2010  
 In accordance with Regulation 25(1) of the Land Surveyors' Regulations 1998, I certify that this plan is correct

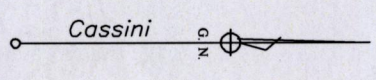
Checked by *Asst. 10:8:2011*  
 Entered by .....



LINE	BEARING	DISTANCE
C-D	89°-51'	2.55

SCALE 1 : 1000

Distances are in Metres



Trinidad and Tobago Land Surveyor .....  
*Gregory Morris*  
 2010