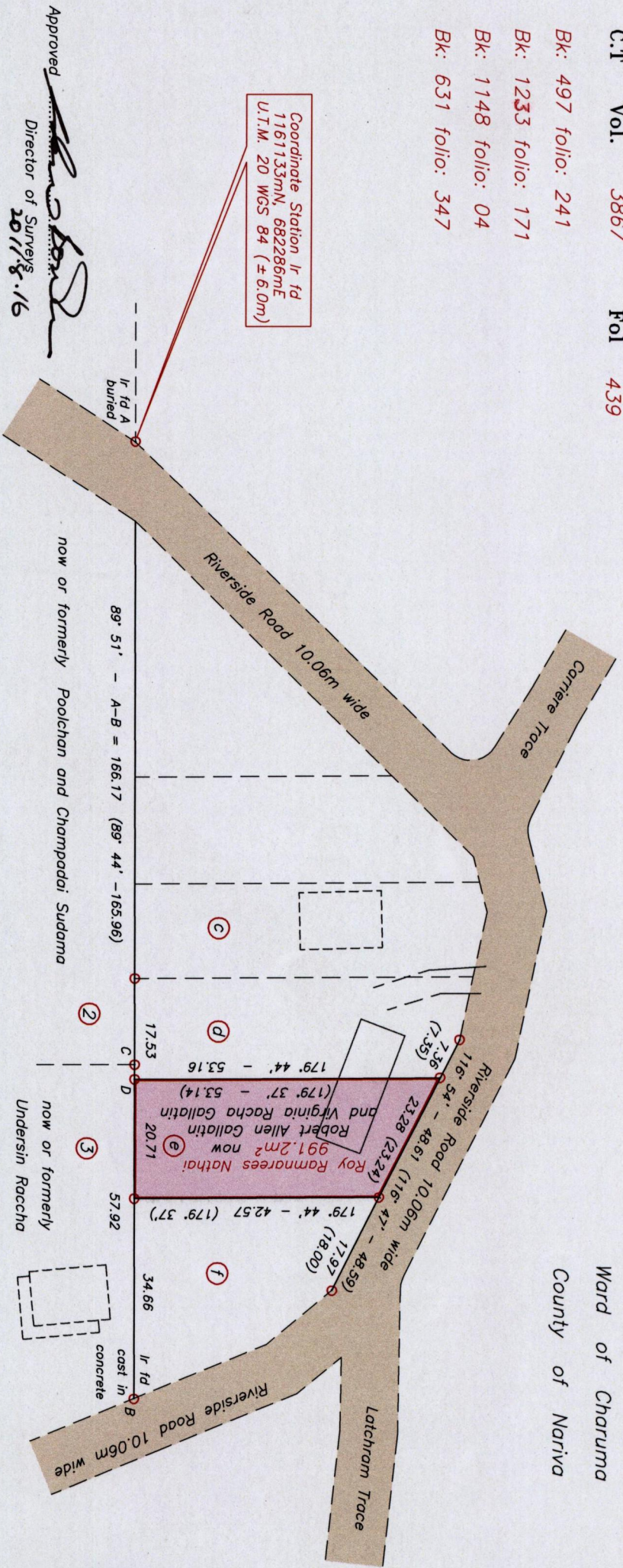


R.P.O. Vol. 680 Fol 563
 C.T Vol. 3867 Fol 439

Bk: 497 folio: 241
 Bk: 1233 folio: 171
 Bk: 1148 folio: 04
 Bk: 631 folio: 347

Cadastral Sheet H. 1. G. & H., 55D
 Ward of Charuma
 County of Nariva

Coordinate Station Ir fd
 1161133mm, 682286mm
 U.T.M. 20 WGS 84 ($\pm 6.0m$)



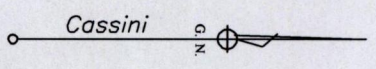
Approved *[Signature]*
 Director of Surveys
 20/1/8.16

Denotes Iron Put unless otherwise stated
 Bearings are Cassini Grid based on Solar Obs.

PLAN of one parcel of land coloured pink in the Ward of Charuma
 Containing nine hundred and ninety one point two square metres
 Surveyed by me, with due authority, in November 2010
 In accordance with Regulation 25(1) of the Land Surveyors' Regulations 1998, I certify that this plan is correct

LINE	BEARING	DISTANCE
C-D	89°-51'	2.55

Distances are in Metres
 SCALE 1 : 1000



Checked by *[Signature]* 6.8.10.8.2011.
 Entered by *[Signature]*

Trinidad and Tobago Land Surveyor *[Signature]* 2010