

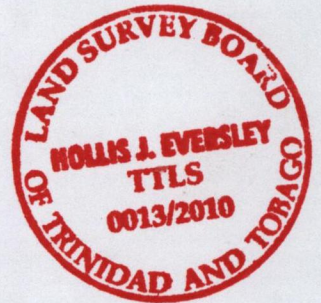
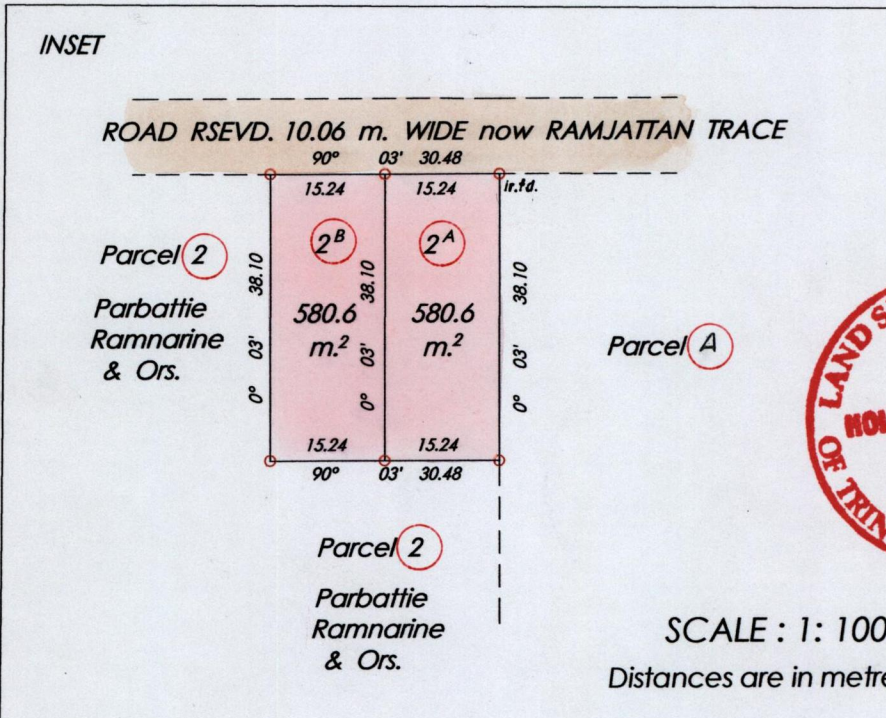
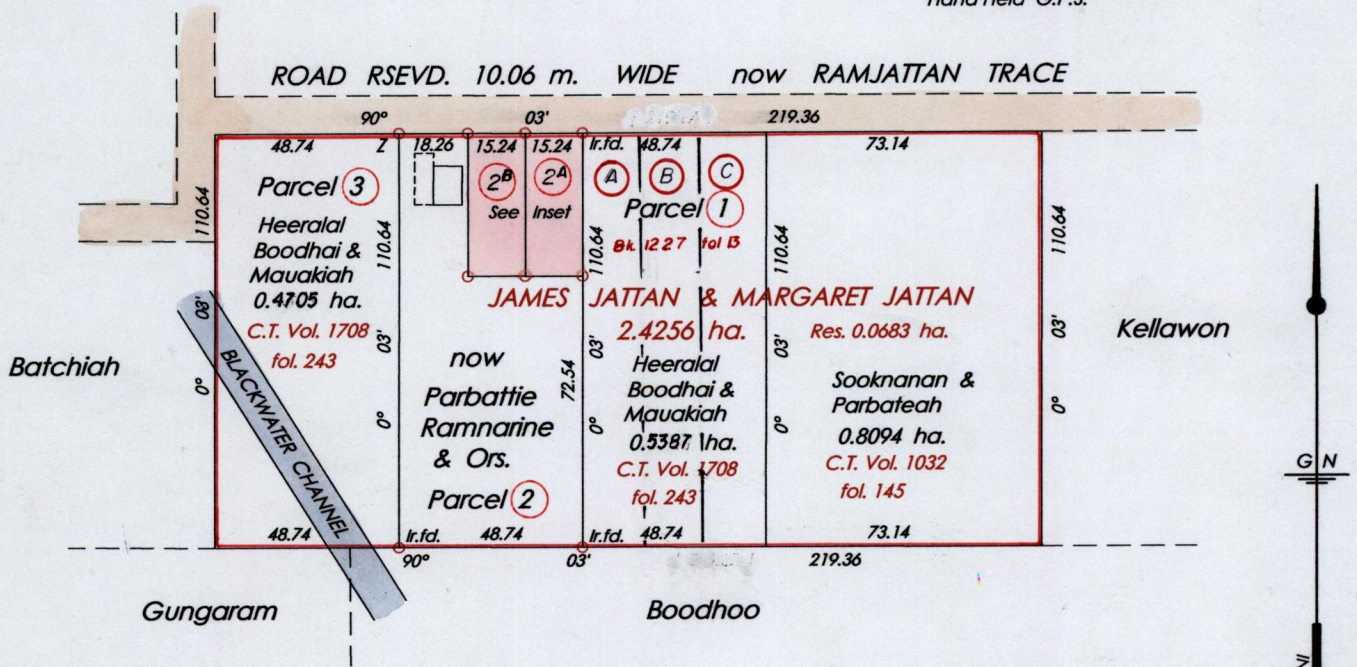
1376

160

R.P.O. Vol. 97 fol. 479
C.T. Vol. 1032 fol. 139

Ward of Siparia
County of St. Patrick
Cadastral Sheet (G. 13 F.) $\frac{63 F.}{1/c}$

Z = N. 1125105 E. 668950
U.T.M. Zone 20 Naparima
Hand Held G.P.S.



BK. 843 fol. 10^d
Bk. 988 fol. 2
Plan M. B. 34

Approved *[Signature]*
Director of Surveys 2011.8.15

○ Denotes Iron Put Except
Otherwise Stated

SCALE : 1: 2500

Note: Bearings are cassini grid based on solar observations Distances are in metres
PLAN of 2 Parcels of land coloured pink in the Ward of Siparia
Containing together one thousand one hundred and sixty one point two sq. metres
Surveyed by me, with due authority, in Feb. 2006
In accordance with Regulation 25 (1) of the Land Surveyors' Regulations 1998,
I certify that this plan is correct.

Checked by *[Signature]* 2011.07.13

[Signature]

Entered on Trinidad & Tobago Land Surveyor *[Signature]* 20th April 2010