

Cadastral Sheet (H.1 D.) 55D & 54F
3/a 4/b

Ward of Ortoire
County of Victoria

U.P.R.N No.....

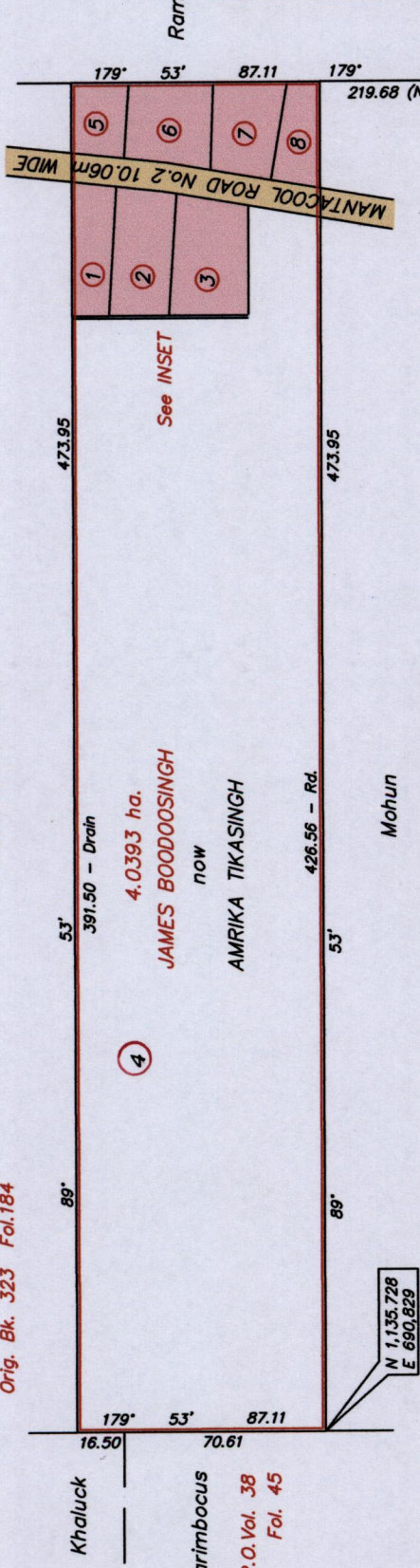
R.P.O. Vol. 38 Fol. 587...

C.T. Vol. 3171 Fol. 337.....

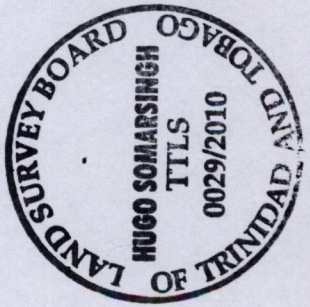
Orig. Bk. 323 Fol. 184

Mattai

R.P.O. Vol. 33 Fol. 551



R.P.O. Vol. 38 Fol. 619



Approved by: *Hugo Somarsingh*
Director of Surveys 2011.8.16

SCALE 1/2500
Distances are in metres
Co-ordinate are based on GPS finding
Naparima U.T.M. Zone 20 +/- 5.00m

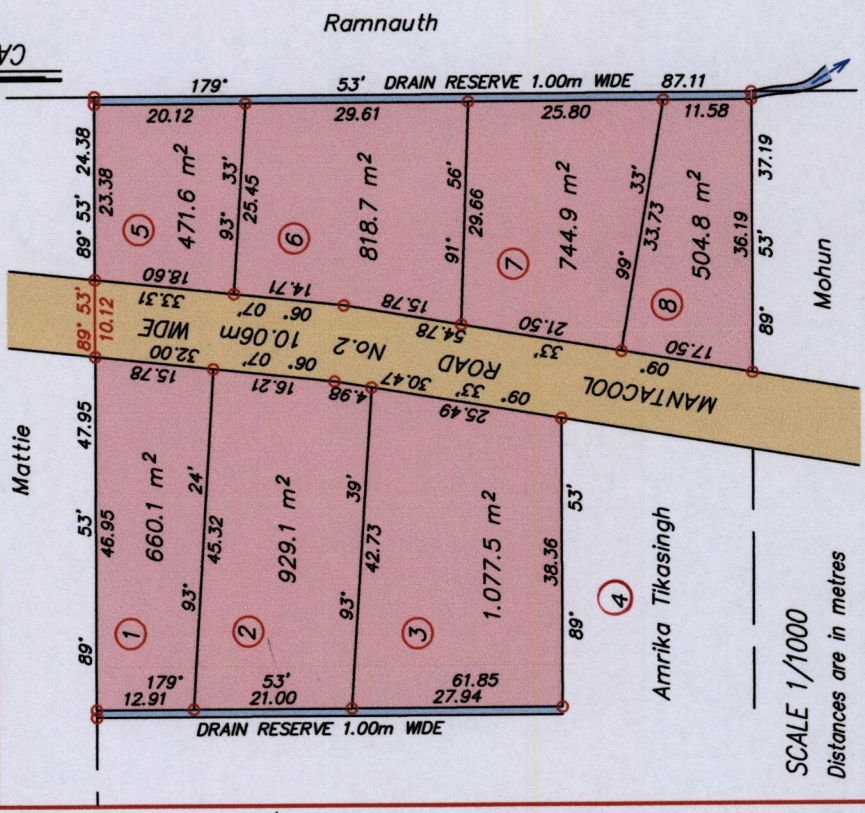
- Denotes Iron put unless otherwise stated
- Bearings are Cassini Grid based on Solar Observations
- Note : To obtain Compass bearings add 07 minutes
- Plan of 7 Parcels of land coloured pink in the Ward of Ortoire
- Containing Together zero point five two zero seven hectare
- Surveyed by me, with due authority in February 1993

In accordance with Regulation 25 (1) of the Land Surveyors' Regulations 1998, I certify that this plan is correct.

Checked by: *Hugo Somarsingh* 11/9/2011

Entered on: Trinidad and Tobago Land Surveyor..... 2010

INSET



SCALE 1/1000
Distances are in metres