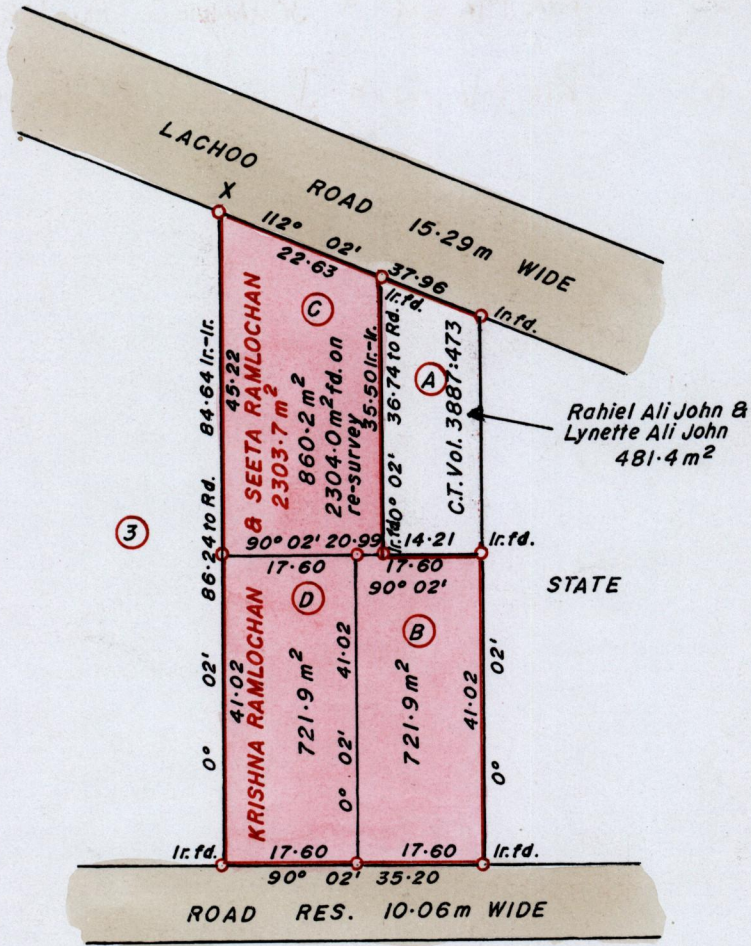


670441mE, 1123451 mN.
 X - U.T.M. 20, WGS 84 (+/- 5.0m)
 GPS Handheld Direct Obs.



Approved *[Signature]*
 Director of Surveys. 2011.8.15

Bk. 1233:207
 SCALE 1:1000.

Distances are in METRES
 o Denotes Iron Put except otherwise stated
 Bearings are Cassini Grid based on Solar Observations.

**PLAN of 3 Parcels of land coloured in PINK in the Ward of Siparia.
 Containing together two thousand three hundred and four point zero square metres.**

**Surveyed by me, with due authority, in December 2009.
 In accordance with Reg. 25(1) of the Land Surveyors' Regulations 1998,
 I certify that this plan is correct.**

Checked by *[Signature]* 2011.08.14

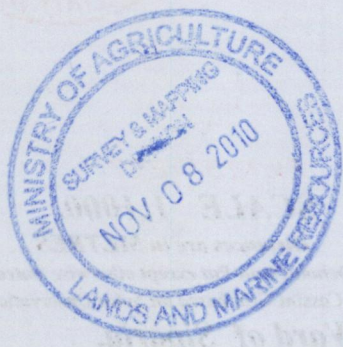
[Signature]
 25 October 2009

Entered Trinidad and Tobago Land Surveyor 2009.

Original BA. 1280 : 182

Ward of Zibonika
County of St. Patrick
Cadastral Sheet G.L. 637
R.P.O. Vol. 104 Fol. 589
C.T. Vol. 4452 Fol. 307

LOT No.	CT. VOLUME & FOLIO	NAMES
B	5414 fol. 381	LARRY SIRJU & DEVIKA RAMPHAL
C	5541 fol. 63	RIA MASON & JOHANNES A. CROOIJ
D	5541 fol. 71	RIA MASON & JOHANNES A. CROOIJ



PLAN of 3 Parcels of land coloured in PINK in the Ward of Zibonika
Containing together two thousand three hundred and four point zero square
metres
Surveyed by me with due authority, in December 2009.
In accordance with Reg. 25(1) of the Land Surveyors' Regulations 1998.
I certify that this plan is correct.

1376/156