

Process ID # 40785

R.P.O. Vol. 112 fol. 561

C.T. Vol. 2153 fol. 183

Ward of Ortoire

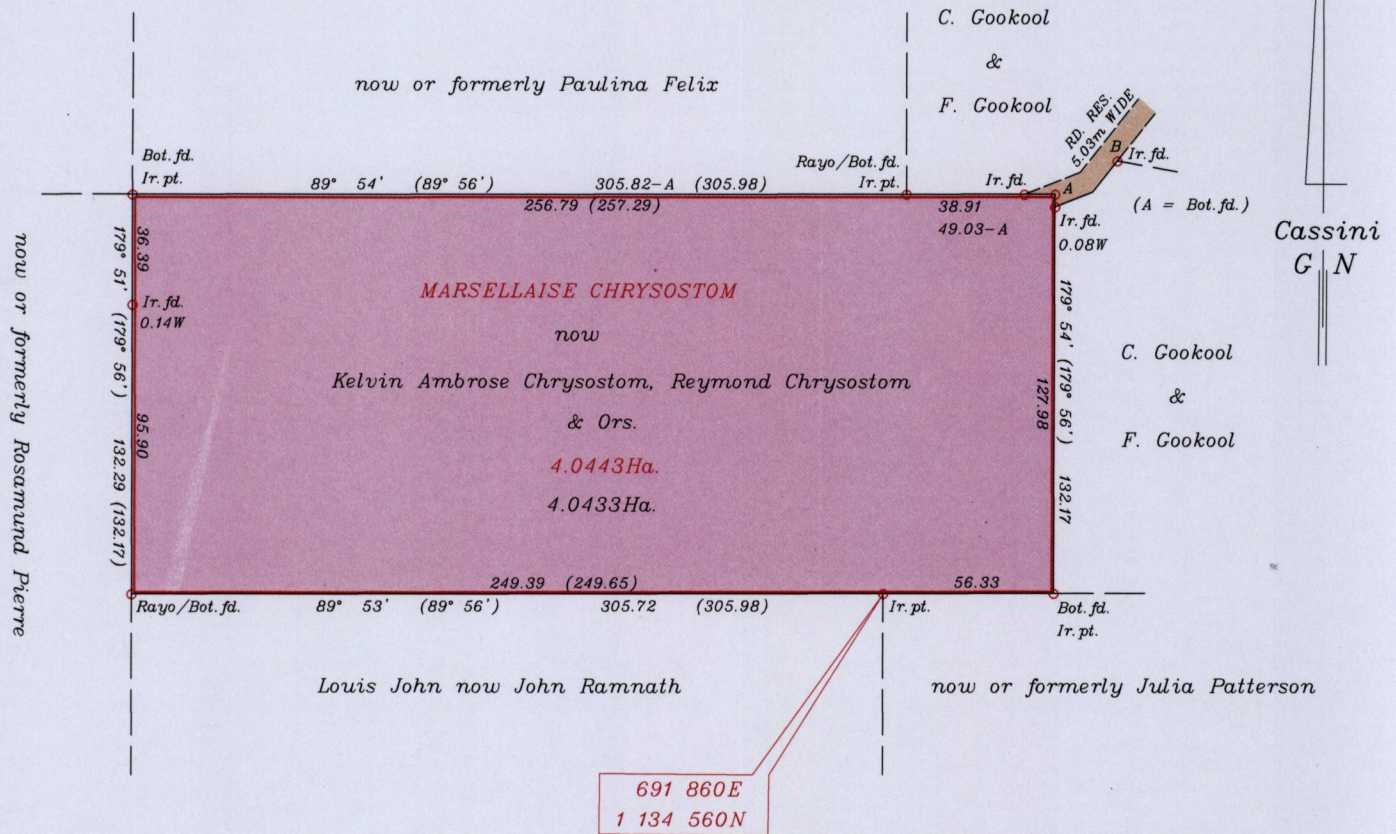
County of Victoria

Cadastral Sheet H.1.N., 55D
3/a

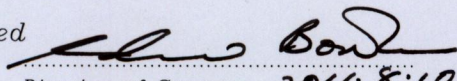
VIDE Bk.340 fol.274

Bk.1014 fol.221

Bk.1282 fol.183



| Line | Bearing | Distance |
|------|---------|----------|
| AB | 61° 44' | 23.34 |

Approved 
 Director of Surveys 2011.8.10



Co-ordinates are U.T.M. Zone 20 Naparima Datum +/-5m
 obtained from handheld G.P.S.

SCALE 1:2500

Bearings are Cassini Grid based on Solar Observations Distances are in metres

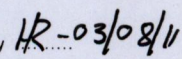
PLAN of a Parcel of land coloured pink in the Ward of Ortoire

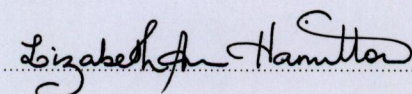
Containing four point zero four three three hectares

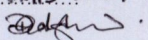
Surveyed by me, with due authority, in May 2011

In accordance with Regulation 25(1) of the Land Surveyors Regulations 1998,

I certify that this plan is correct.

Checked by  12-03/08/11



Entered O.M.S. 21-09-2012


Trinidad & Tobago Land Surveyor June 23 2011