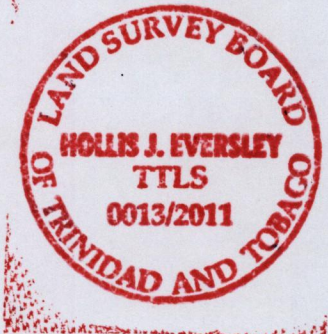
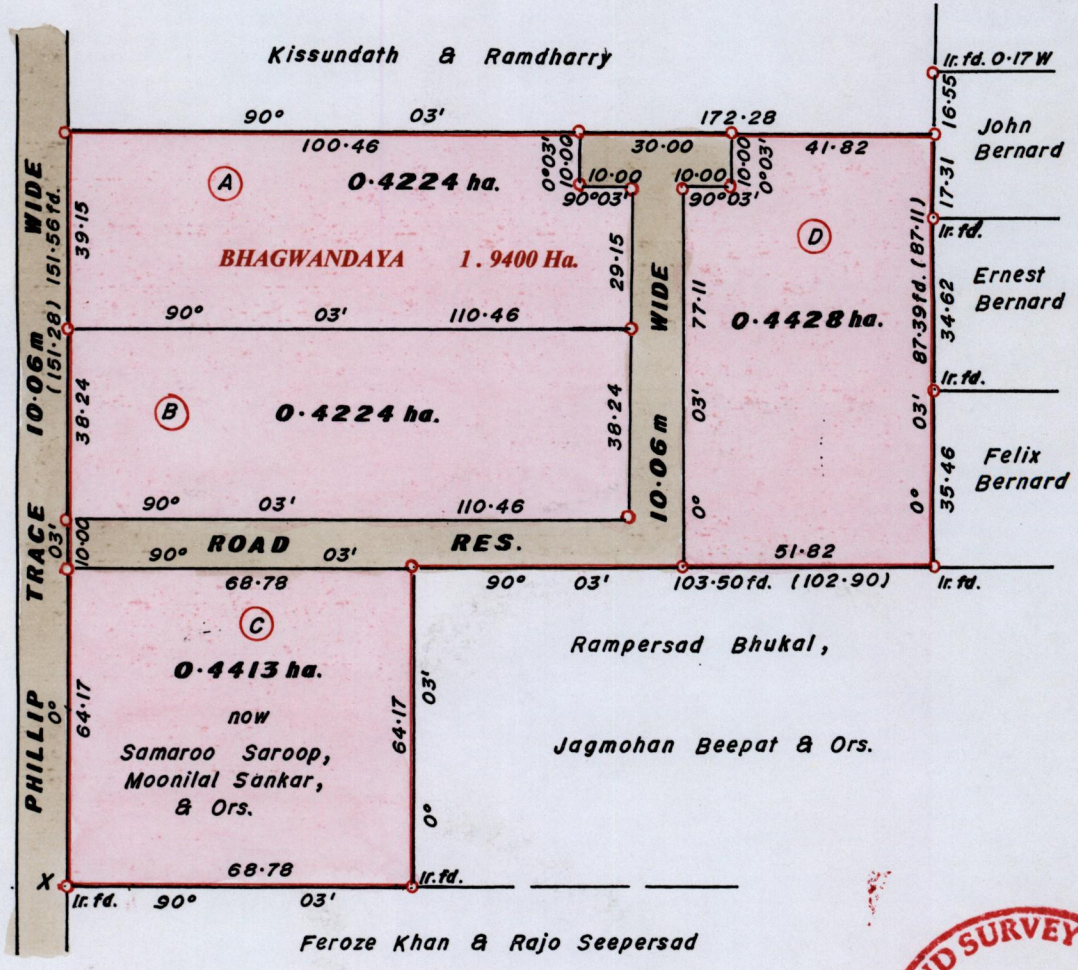
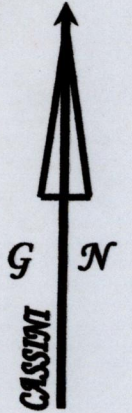
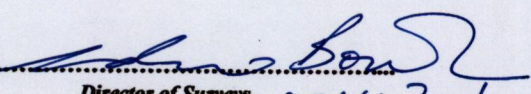


674557 mE, 1122940 mN.
X- U.T.M. 20, WGS 84 (+/- 5.0m)
GPS Handheld Direct Obs.

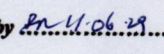


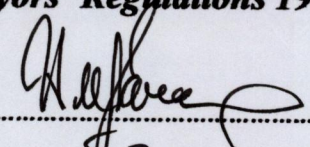
Approved 
Director of Surveys. 2011.7.1

Bk. 602 : 94.
SCALE 1:1500.

Distances are in METRES
o Denotes Irons Put except otherwise stated
Bearings are Cassini Grid based on Solar Observations.

**PLAN of 4 Parcels of land coloured in PINK in the Ward of Siparia.
Containing one point seven zero eight nine hectares.
Surveyed by me, with due authority, in February 2010.
In accordance with Reg. 25(1) of the Land Surveyors' Regulations 1998,
I certify that this plan is correct.**

Checked by  27.11.06.29


25.7.2011
Trinidad and Tobago Land Surveyor 2010.