

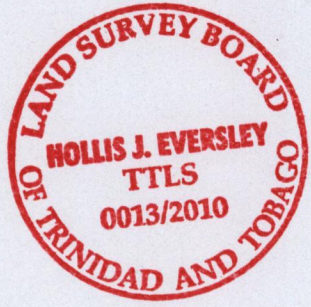
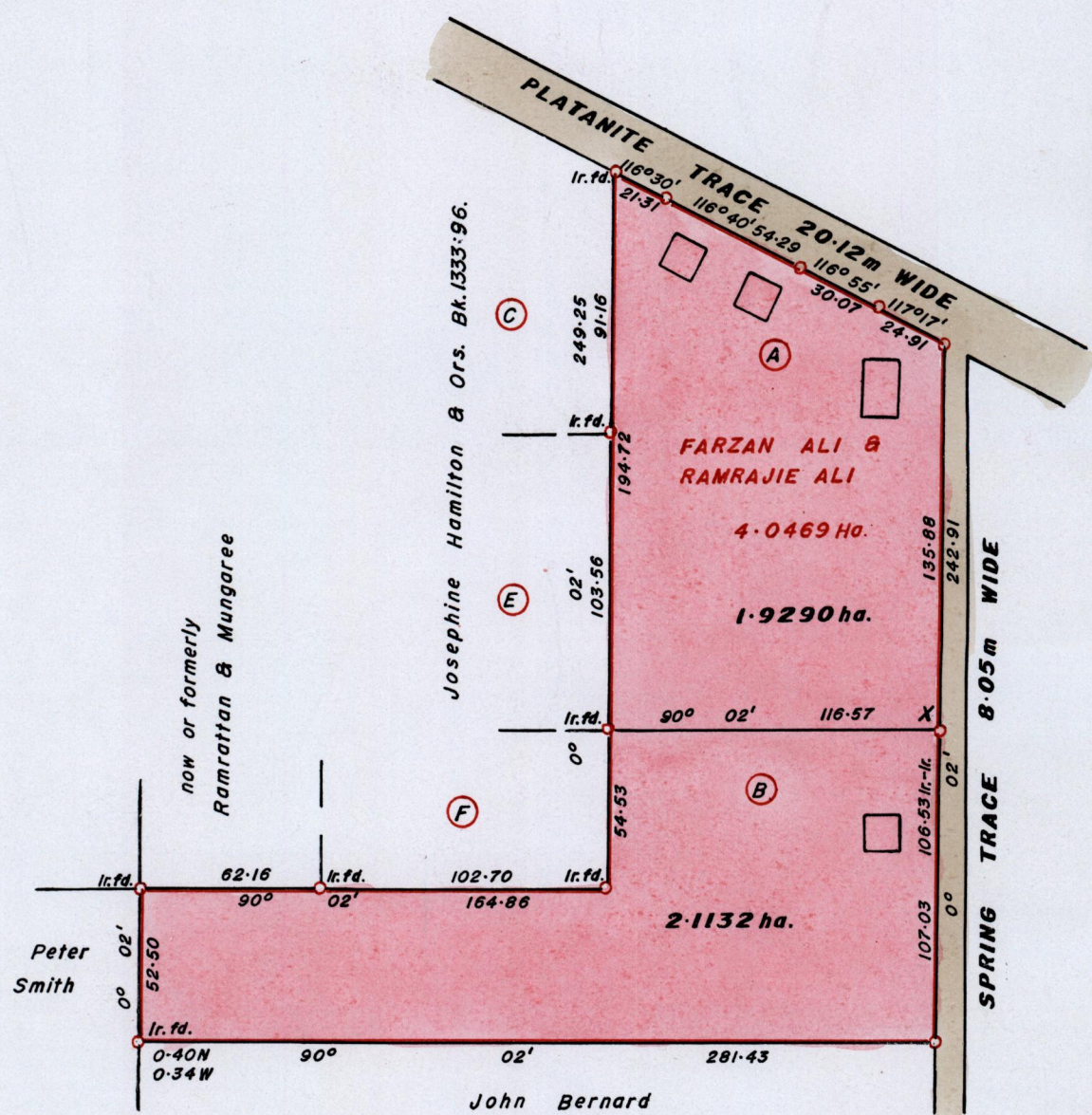
Process ID # 34101  
 R.P.O Vol. 592 Fol. 209  
 C.T. Vol. 4660 Fol. 3

1376

14()

Ward of Siparia.  
 County of St. Patrick.  
 Cadastral Sheet G.14.M. 64D  
 3/c

675556 mE, 1122402mN.  
 X- U.T.M. 20, WGS 84 (+/- 5.0m)  
 GPS Handheld Direct Obs.



Bk. 568 : 186.

SCALE 1:2500.

Distances are in METRES

o Denotes Iron Put except otherwise stated  
 Bearings are Cassini Grid based on Solar Observations.

Approved: *[Signature]*  
 Director of Surveys. 2011.7.1

**PLAN of 2 Parcels of land coloured in PINK in the Ward of Siparia.  
 Containing together four point zero four two two hectares.  
 Surveyed by me, with due authority, in October 2010.  
 In accordance with Reg. 25(1) of the Land Surveyors' Regulations 1998,  
 I certify that this plan is correct.**

Checked by *[Signature]*

*[Signature]*  
 25<sup>th</sup> October 2010

Entered C.M.S. 18-09-2012  
 Trinidad and Tobago Land Surveyor ..... 2010.