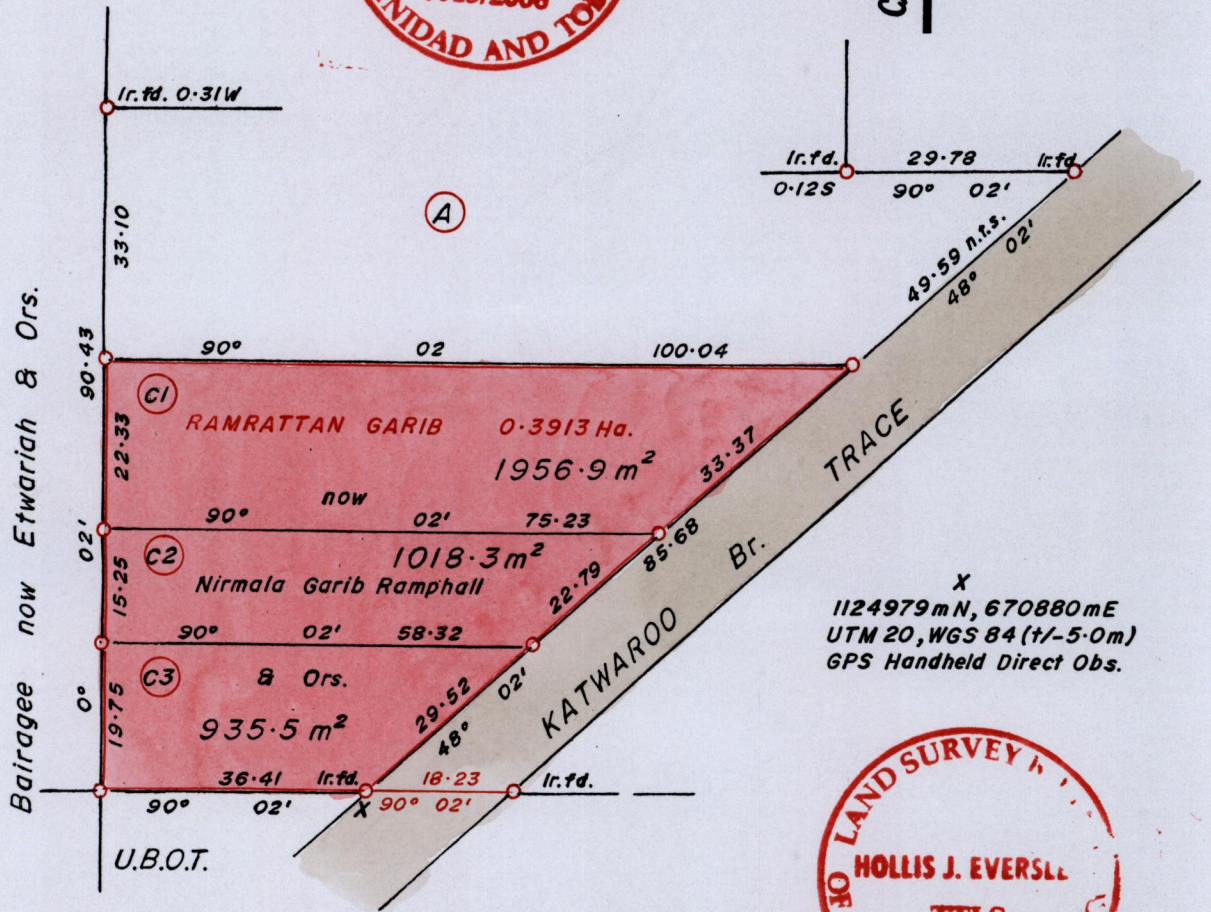
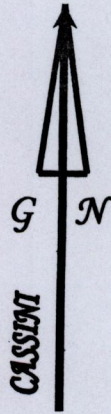
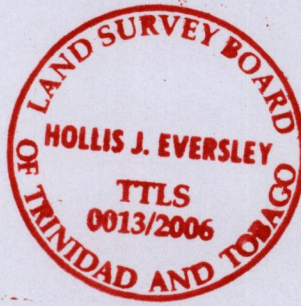


R.P.O Vol. 96 Fol. 293
C.T. Vol. 3240 Fol. 383

Ward of Siparia.
County of St. Patrick.
Cadastral Sheet G.13.G. 63F
17d



X
1124979 mN, 670880 mE
UTM 20, WGS 84 (+/- 5.0m)
GPS Handheld Direct Obs.



Approved:
Director of Surveys. 2011. 7. 1

Bk. 391 : 70
Bk. 1175 : 12.
SCALE 1 : 1000.
Distances are in METRES

○ Denotes Iron Put except otherwise stated
Bearings are Cassini Grid based on Solar Observations.

**PLAN of 3 Parcels of land coloured in PINK in the Ward of Siparia.
Containing together zero point three nine one zero hectare.
Surveyed by me, with due authority, in March 2006.
In accordance with Reg. 25(1) of the Land Surveyors' Regulations 1998,
I certify that this plan is correct.**

Checked by
Entered

Trinidad and Tobago Land Surveyor
13th March 2006.