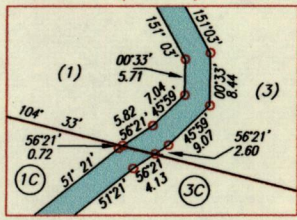


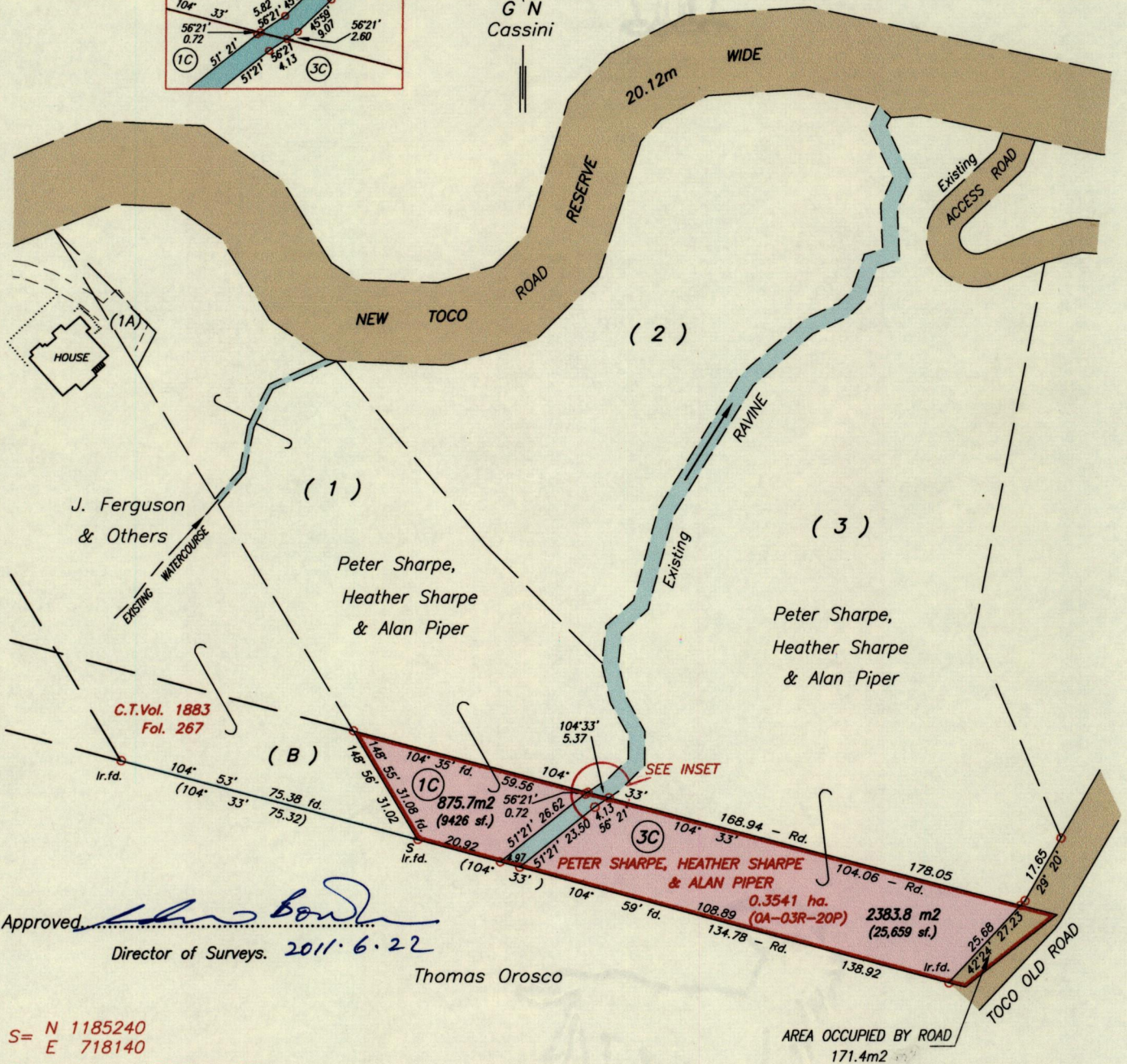
R.P.O. Vol..... Fol.....
C.T. Vol. 1884..... Fol. 317

16B
Cadastral Sheet 4/b (C.14.E.)
Ward of Matura
County of St. Andrew

INSET (N.T.S.)



G N
Cassini



Approved *[Signature]*
Director of Surveys. 2011.6.22

Thomas Orosco

S= N 1185240
E 718140

Coordinates are UTM Zone 20N
Naparima Datum +/- 5.0m
Obtained from L&S. 1:2,500 mapping

REF. Bk.1010 fol.166

SCALE 1:1500
Distances are in Metres.

○ Denotes Iron put unless otherwise stated
Bearings are based on Solar observations

PLAN of 2 Parcels of land coloured pink in the Ward of Matura.
Containing together three thousand, two hundred and fifty nine point five square metres.

Surveyed by me, with due authority, October 2009 for Heather Sharpe

In accordance with Regulation 25 (1) of the Land Surveyors' Regulations 1998,
I certify that this Plan is correct.

Checked by *[Signature]* 21 2011.06.01

Entered on

[Signature] T.T.L.S.
Trinidad & Tobago 16 December 2010
Land Surveyor

