

1376 6/128

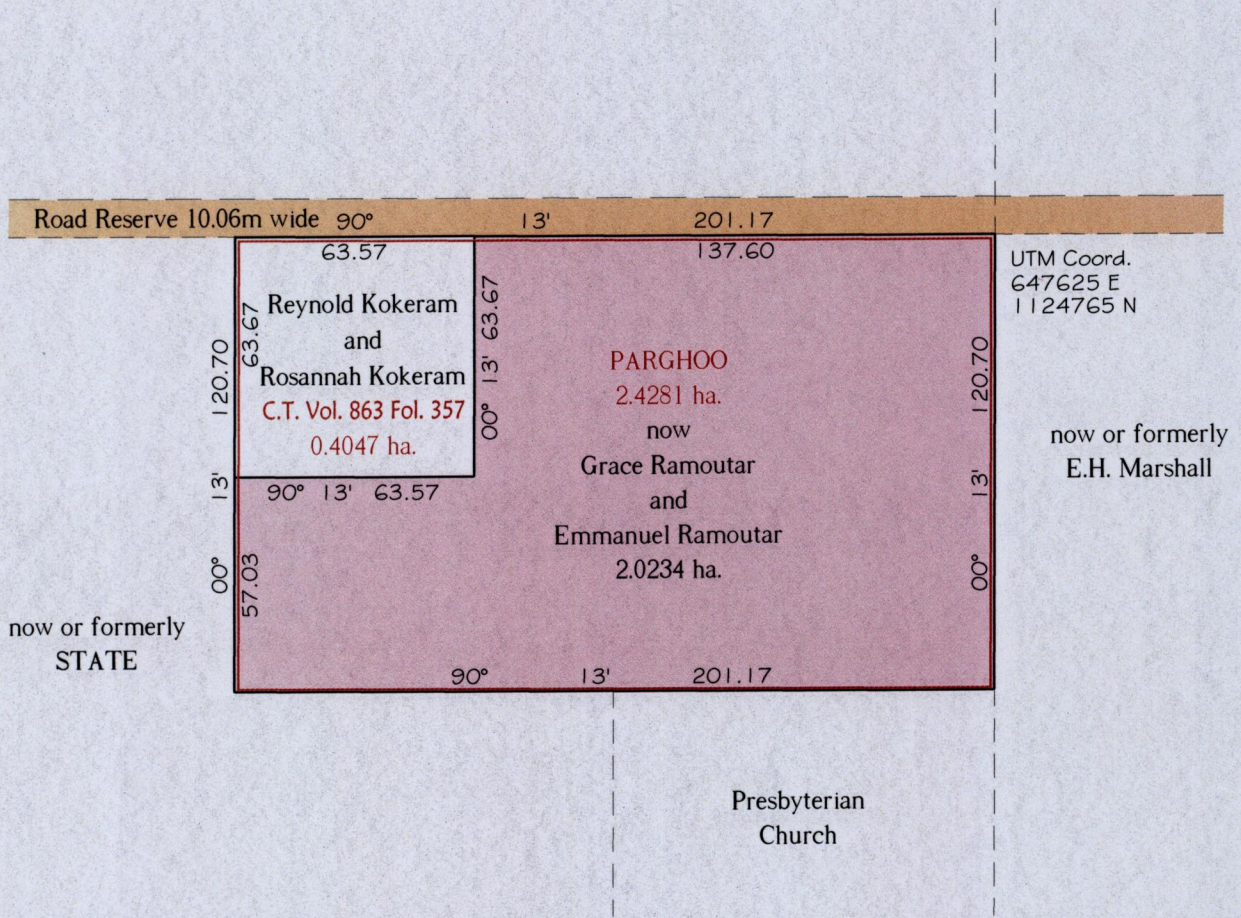
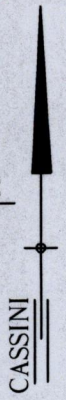
1283

REMAINING PORTION PLAN

R.P.O Vol. 161 Fol. 505
C.T. Vol. Fol.
Address:- Seasame St.,
Guapo.

Ward of La Brea
County of St. Patrick
Cadastral Sheet (F.15.F & J),

62E
3/a



Approved

Director of Surveys 2011-6-2

Note - UTM (WGS 84) Coordinates obtained from hand held GPS receiver ± 5.00m

Ref:- Bk. 477 Fol. 241
Bk. 780 Fol. 197
SCALE 1:2500

Note: Bearings are Cassini grid based on solar observations Distances are in metres.
This is a true copy of a diagram of two point four two eight one hectares originally, granted to PARGHOO showing a portion coloured pink and containing two point zero two three four hectares being the remainder after (1) one previous transfer of other portions of land.
In accordance with Regulation 25(1) of the Land Surveyors' Regulations 1998, I certify that this plan is correct.

Checked by
Entered on

Trinidad & Tobago Land Surveyor 16.05.2011

